

PRODUCT SPECIFICATION

Customer:

Customer's part number:

Product description: GPS and GSM Antenna

Uni Link's part number: YNX-GPS+GSM-007-SMA

Issue Date: 2012-5-11

Note: 1575.42±2MHz/800~1900MHz,
SMA Connectors

Customer Use		Customer's authorized signature	Remarks
Full approved			
Conditional approved			
Rejected			

**Shenzhen Yetnorson Technology Co., Ltd.**Website: <http://www.yetnorson.com/>E-mail: sales06@ynxantenna.com

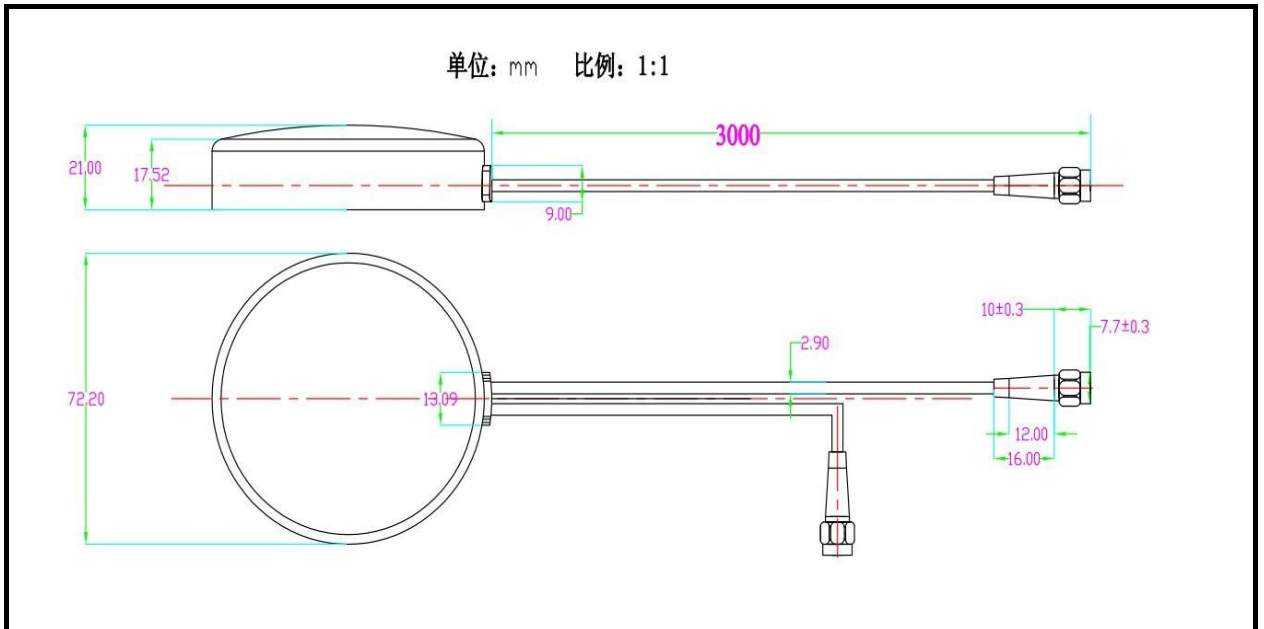
1. PRODUCT TECHNICAL SPECIFICATION

GPS Electrical Specification	
Center Frequency (MHz)	1575.42MHz/1602MHz
Bandwidth (MHz)	6MHz
Gain (dBi)	28dB±3dB(LNA)
Input Impedence (Ω)	50 Ω
V.S.W.R	≤1.8
Consumption Electric	<10mA
Polarization Intensity	R.H.C.P
Supply Voltage	DC3.3~5.0V
ESD-Compliant	SJ/T 10694
Testing voltage (KV)	15
The Sound Coefficient	≤1.5dB
Axial Ratio	3dB
Max Input Power (w)	50
Operating Temperature	-40°C~+85°C
Storing Temperature	-20°C~+85°C
Cable length (mm)	3000
Connector Type	SMA male
Radome Color	Black
Dimension-mm	Φ72 x 21
Weight (g)	140
GSM Electrical Specifications	
Frequency Range (MHz)	900-1800Mhz
Input Impedance (Ω)	50
V.S.W.R	≤1.5
Gain (dBi)	3.0
Polarization Type	Vertical
Radiation Direction	Omnidirectional
Max Input Power (w)	50
Operating Temperature	-40°C~+85°C
Storing Temperature	-20°C~+85°C
Cable length (mm)	3000
Connector Type	SMA male
Radome Color	Black
Dimension-mm	Φ72 x 21

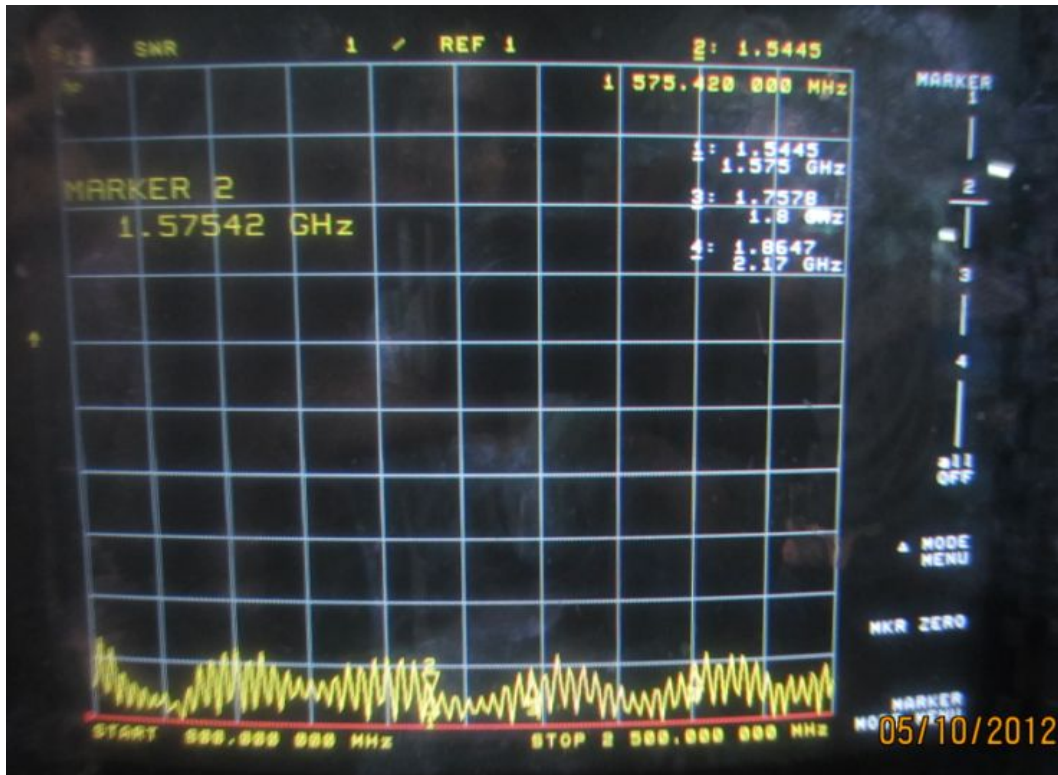
2. PRODUCT PICTURE



3. PRODUCT SPECIFICATION CHART



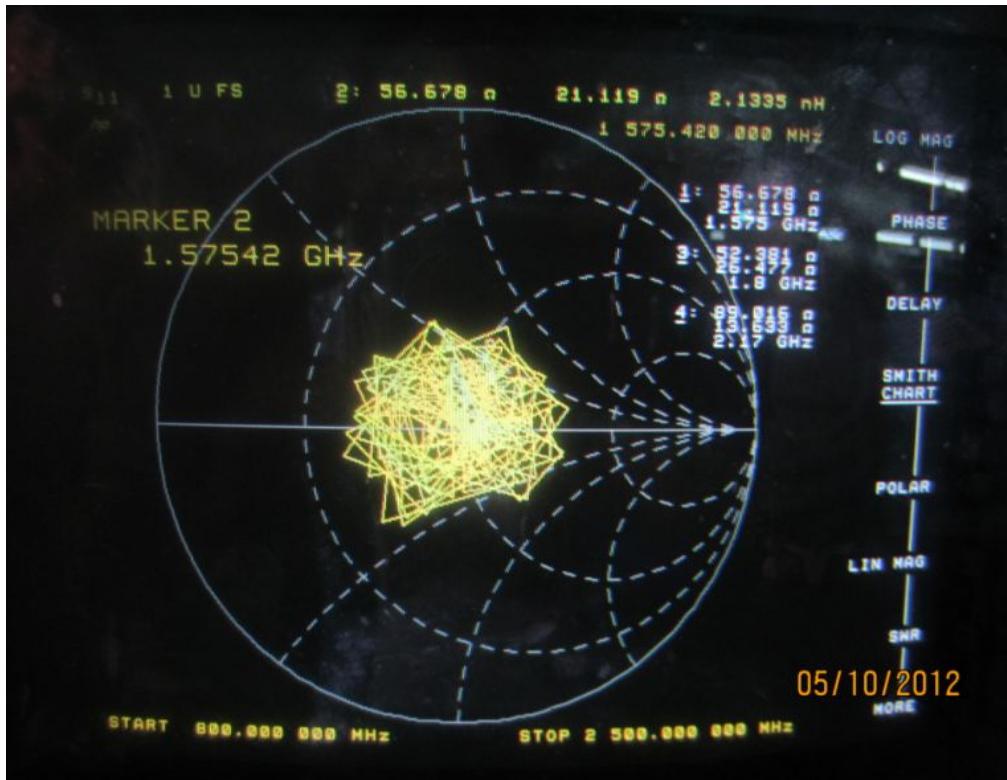
4.1 GPS (STATIONARY WAVE PATTERN)



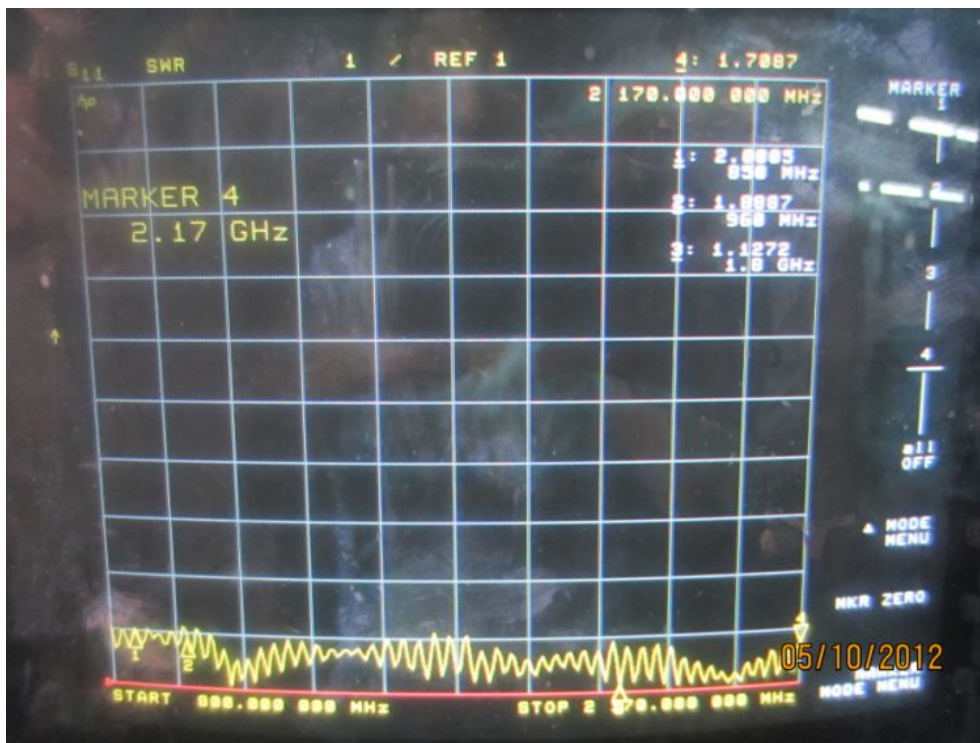
4.2 GPS (RETURN LOSS TEST)



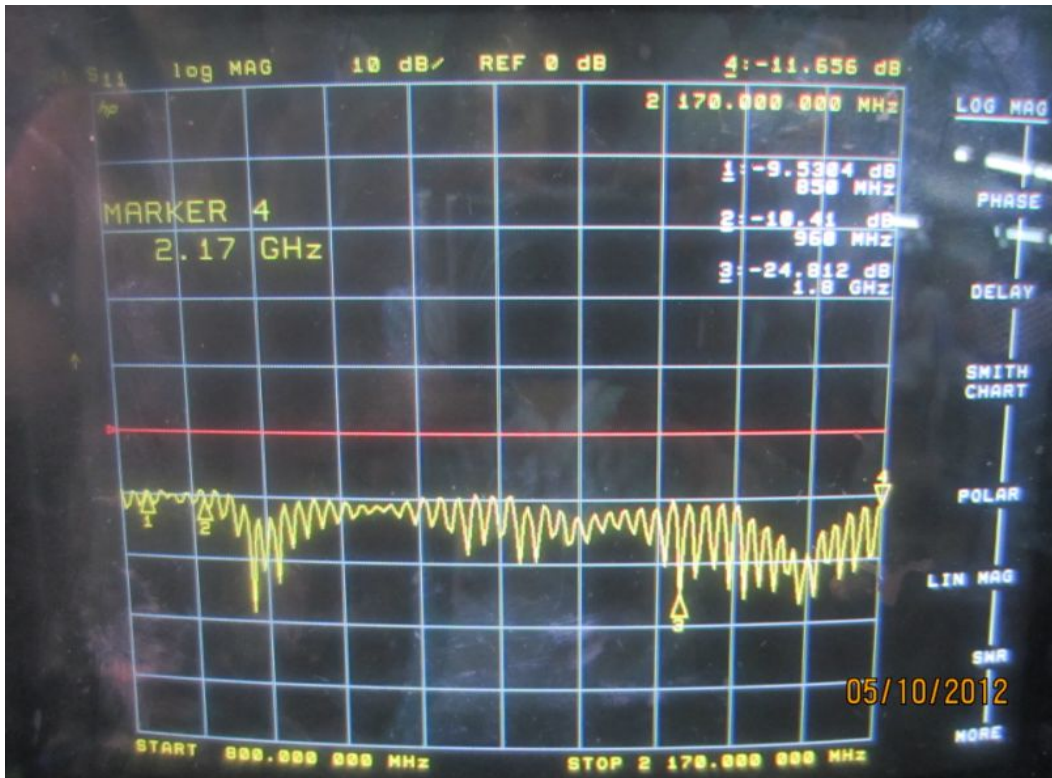
4.3 GPS (IMPEDANCE TEST)



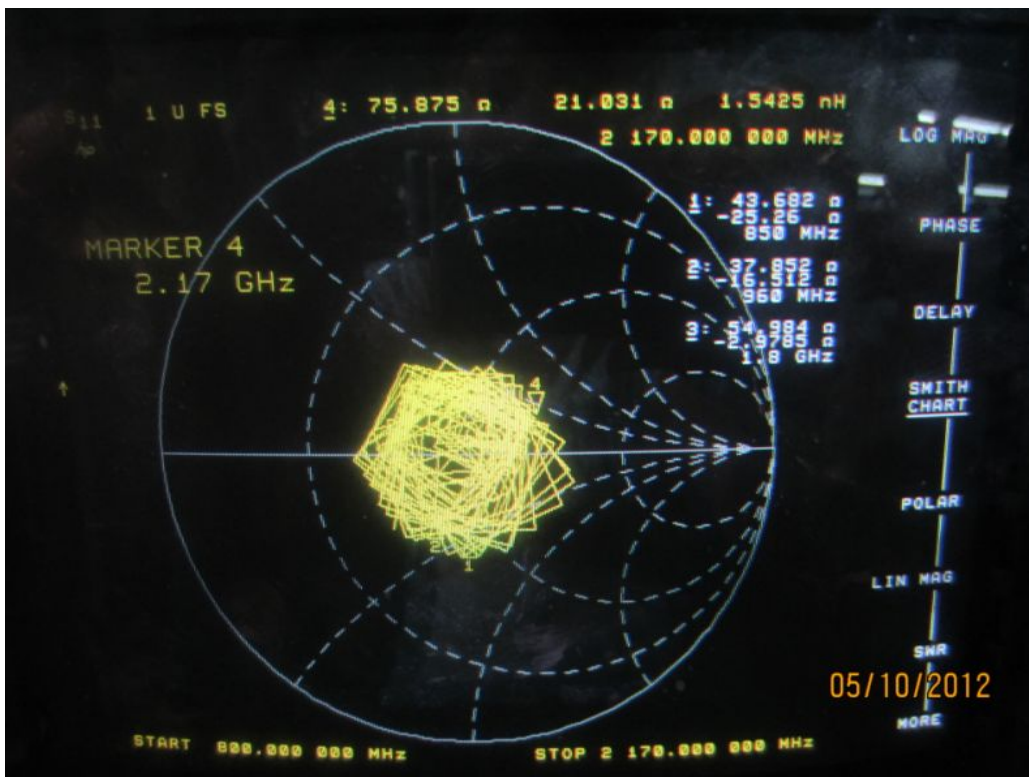
5.1 GSM (STATIONARY WAVE PATTERN)



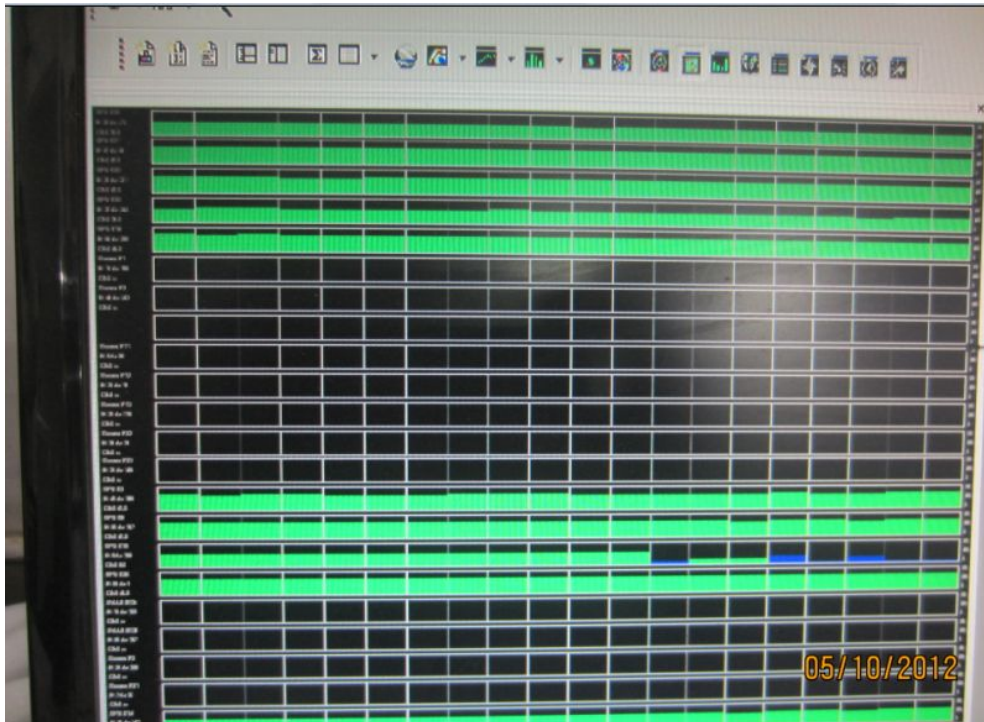
5.2 GSM (RETURN LOSS TEST)



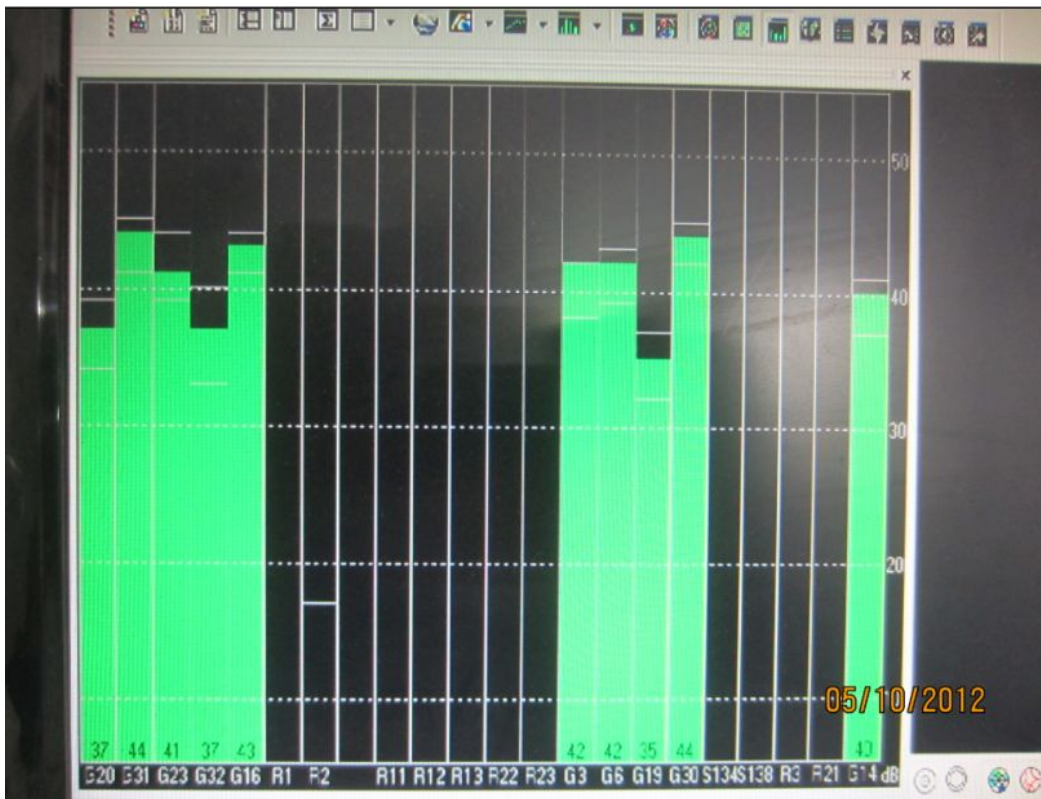
5.3 GSM (IMPEDANCE TEST)



6.1 GPS (CURRENT TEST)



6.2 GPS (SIGNAL TEST)



6.3 GPS (ACCEPT STAR NO.)

