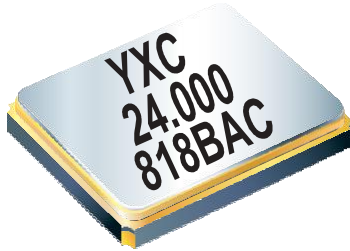


Features



- External dimensions: 3.2 x 2.5 x 0.7 mm.
- Frequency range: 8.0MHz ~ 66MHz.
- Low impedance performance.
- AEC-Q200 qualified.
- RoHS Compliant / Pb Free.
- The best choice of Bluetooth, GPS

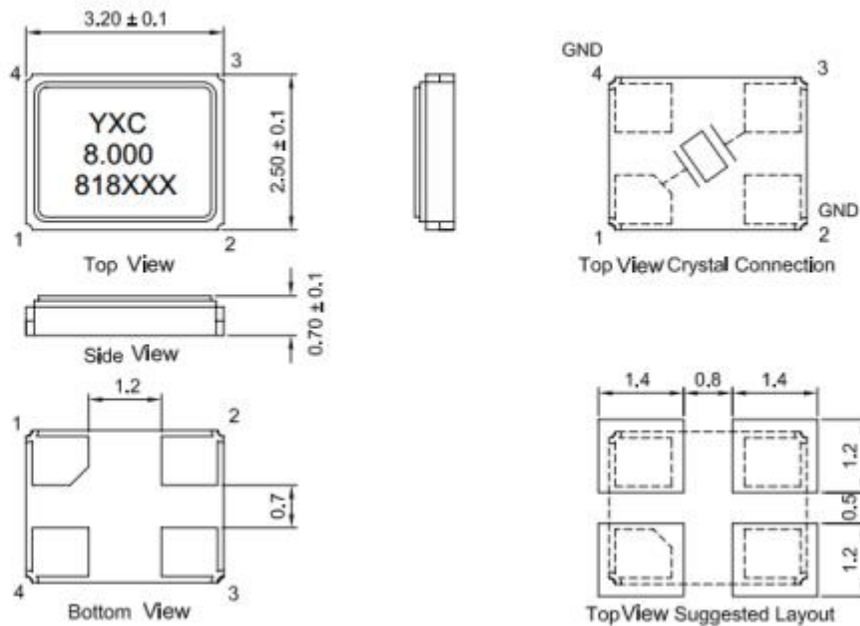
Electrical Specifications

Item / Type	XC322524MKB4SA
Nominal Frequency	24 MHz
Vibration Mode	AT Fundamental
Load Capacitance	8.0pF
Frequency Tolerance (at 25 °C)	± 10 ppm
Frequency Versus Temperature Characteristics	± 50 ppm
Operating Temperature	- 40 ~ + 125 °C
Storage Temperature	- 40 ~ + 125 °C
Shunt Capacitance	3 pF Max.
Level Of Drive	200 μ W Max
Frequency Aging (at 25 °C)	± 2 ppm / year Max.

Equivalent Series Resistance(ESR)

Fundamental					
8.0~9.9MHz	800 Ω Max.	12.0 ~ 12.9 MHz	100 Ω Max.	21.0 ~ 29.9 MHz	60 Ω Max.
10.0 ~10.9MHz	250 Ω Max.	13.0~ 15.9 MHz	80 Ω Max.	30.0 ~ 66.0 MHz	50 Ω Max.
11.0 ~11.9MHz	150 Ω Max.	16.0~ 20.9 MHz	70 Ω Max.		

Dimensions



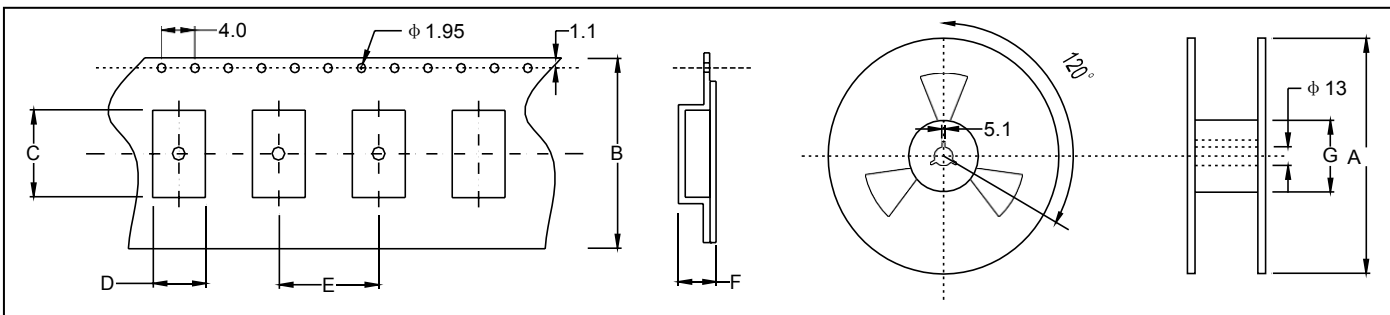
Units: mm

★ PARTNUMBER GUIDE 部件号示例 e.g.XC322524MKB4SA

YSX321SL = 3.2 × 2.5 SMD SEAM TYPE

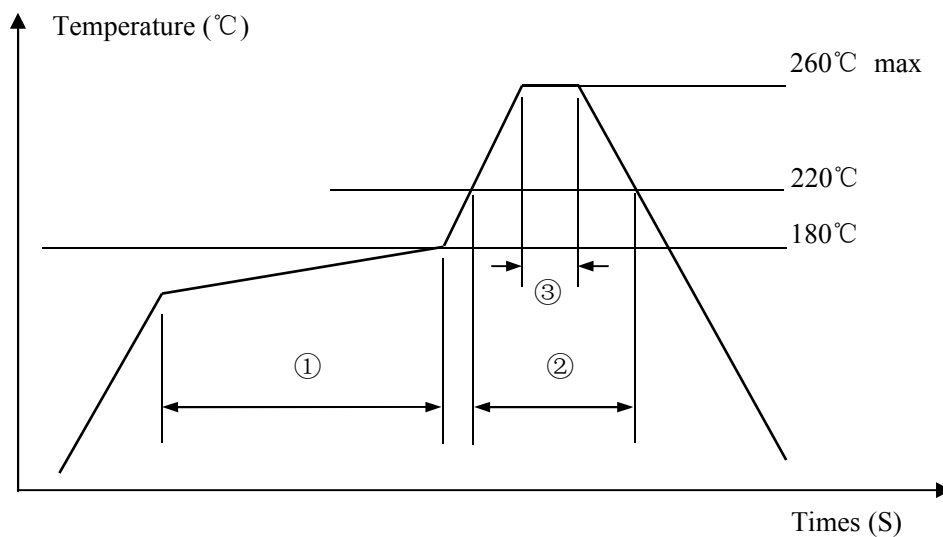
Quartz Crystal Resonator	Dimensions	Frequency (MHz)	Load Capacitance (Pf)	Frequency Stability Overall (ppm)	Pin	Material	Operating Temp. Range
Crystal Resonator	3.2* 2.5mm	24.00MHz	8.0pf	±10ppm	4 pin	Metal	-40~ +125 °C

★ TAPING SPECIFICATION (Unit: mm) 编带规格



	A	B	C	D	E	F	G
SMD3225	178 ± 2.0	8.03 ± 0.3	3.81 ± 0.10	3.04 ± 0.10	3.84 ± 0.1	1.54 ± 0.10	62.0 ± 1.0
3000 pcs per reel							

★ REFLOW SOLDERING PROFILE 回流焊特性



Pb free reflow A	①	Preheat	160~180 °C	120sec. max
	②	Primary heat	220 °C	60sec. max
	③	Peak	260 °C	10sec. max.