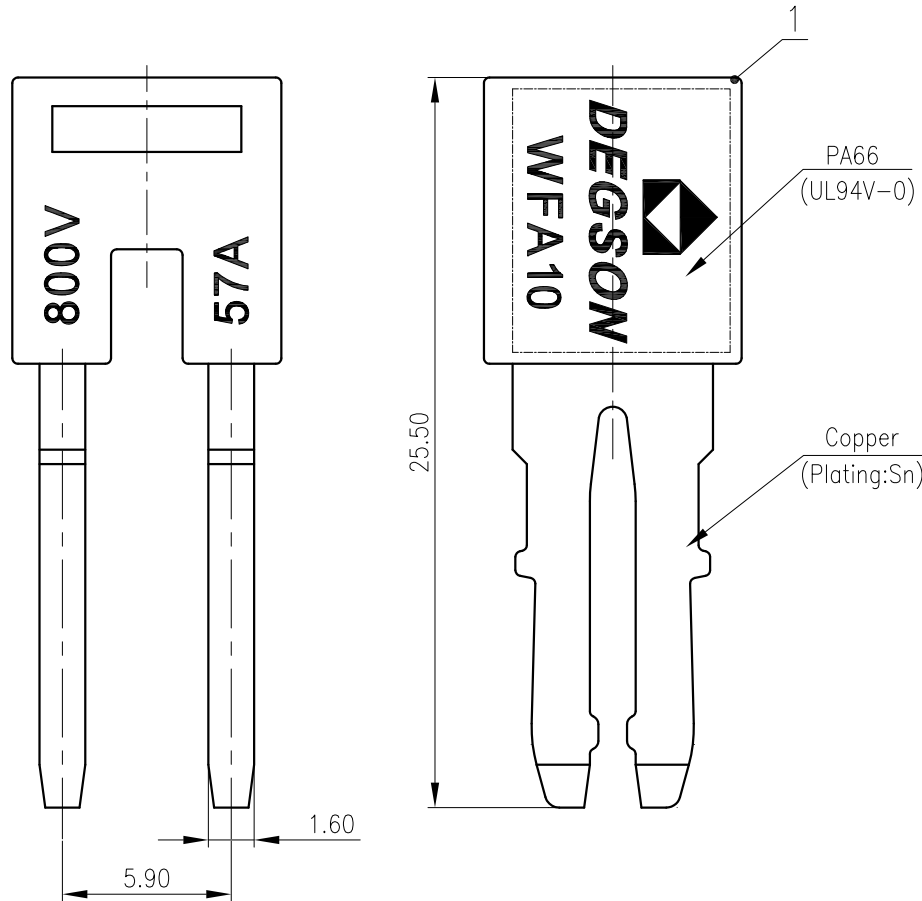
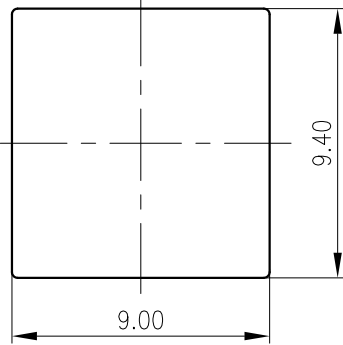


A
B
C
D

未注公差/General tolerances(mm)													0.1/10 ±2'	
0 ~ 3	>3 ~ 6	>6 ~ 10	>10 ~ 18	>18 ~ 30	>30 ~ 50	>50 ~ 80	>80 ~ 120	>120 ~ 180	>180 ~ 250	>250 ~ 315	>315 ~ 400	>400 ~ 500		>500
±0.12	±0.18	±0.22	±0.26	±0.31	±0.37	±0.57	±0.80	±0.93	±1.05	±1.15	±1.60	±2.20	±2.50	



1	WFA10-01P-1Y-00A(H)		
ITEM	NAME OF PART	MATERIAL	NOTES
间距/Pitch(mm)/线数范围/Poles		5.90/01P	
使用温度范围/Operating temperature(°C)		-40~+105	
符合RoHS环保要求/Conform to RoHS		Yes	

MATERIAL:	SURFACE:		
MAT NO.:	/		
STATUS:	/		
APPD: Li GL 2020.06.06	NAME: WFA10-01P-1Y-00A(H)		
CHKD: Mao J 2020.06.06	DRAWING NO.: WFA10-C01		
DRFT: Feng X 2020.05.23	REV	TO	
⊕	SIZE: A4	mm (inch)	TYPE: CUSTOMER DRAWING
	SCALE: 4:1	SHEET	1/1

REV	ECN	DESCRIPTION	DRFT	DATE