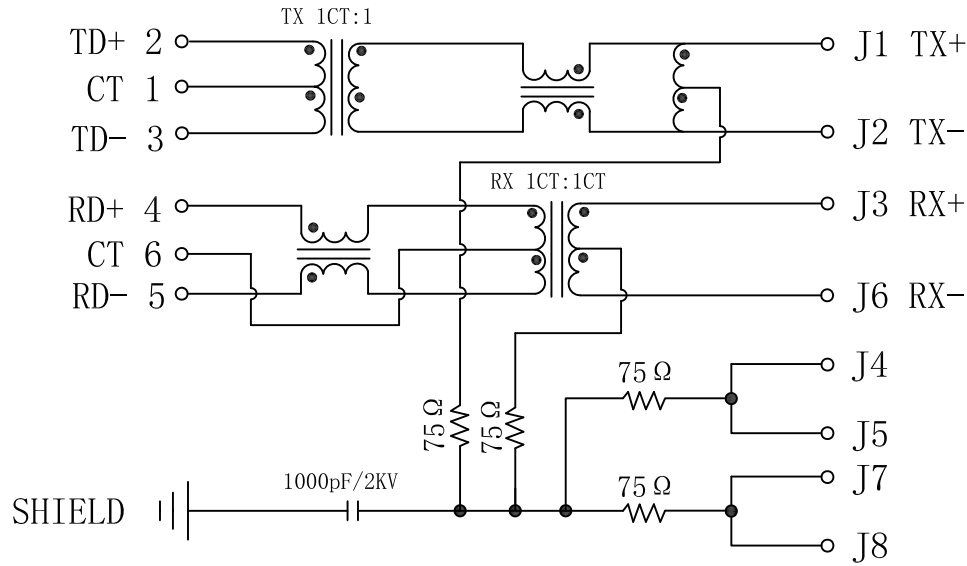


Schematic:

REV.	ECN NO.	DESCRIPTION	DATE	APPD
B	REL		2014-08-11	

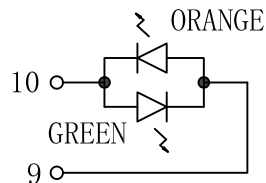
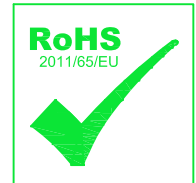
PC BOARD CONNECTIONS



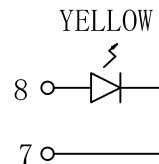
RJ45 CONNECTOR

ELECTRICAL SPECIFICATIONS @25°C

- Turn Ratio($\pm 3\%$):
TX=1CT:1CT RX=1CT:1CT
- Inductance OCL:
350uH MIN @ 100KHz 0.1V 8mA DC Bias
- Leakage Inductance:
0.6uH MAX @ 100KHz 0.1V
- Interwinding Capacitance:
35pF MAX @ 100KHz 0.1V
- DCR:
2-3 J3-J6 0.9Ω MAX
4-5 J1-J2 1.2Ω MAX
- Insertion Loss:
-1.0dB MAX @ 1-65MHz
- Return Loss:
-20dB TYP @ 1-30MHz
-16dB TYP @ 30-60MHz
-12dB TYP @ 60-80MHz
- Cross talk:
-40dB MIN @ 1-30MHz
-35dB MIN @ 30-60MHz
-30dB MIN @ 60-100MHz
- Common Mode Rejection:
-30dB MIN @ 1-50MHz
-20dB MIN @ 50-150MHz
- Hipot Test:1500Vrms
- Operating Temperature Range: 0°C TO 70°C



LEFT LED



RIGHT LED

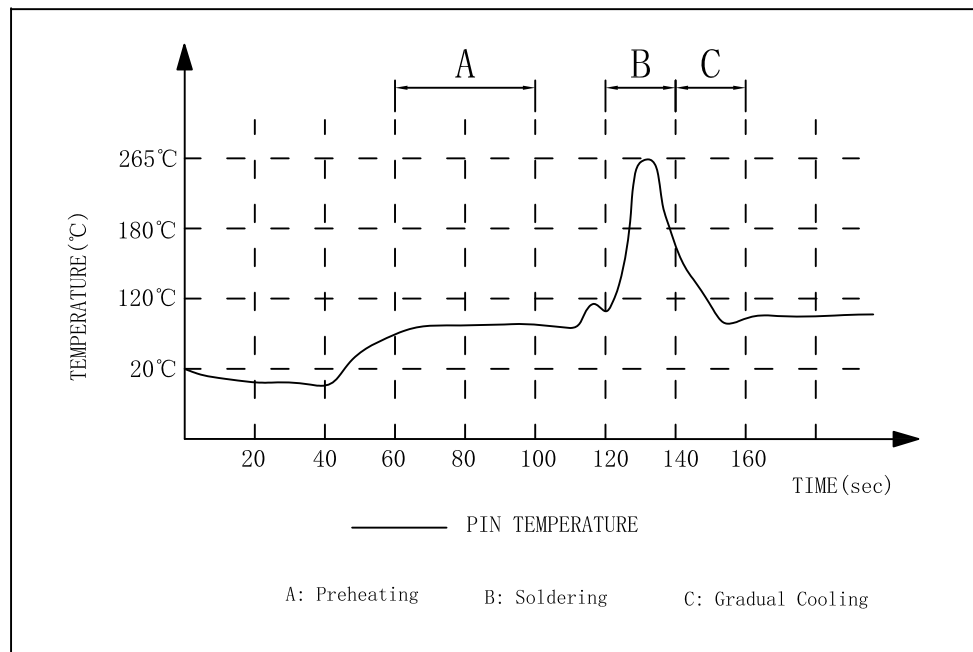
Emitting Color	λ p(nm)	VF@IF=20mA	IR @VR=5V
GREEN	565	1.8~2.4V	10 μ A max
YELLOW	585	1.8~2.4V	10 μ A max
ORANGE	610	1.8~2.4V	10 μ A max

X:X	± 0.25	APPD:	Trxcom	
X:XX	± 0.20	CHKD:	Huizhou Trxcom Electronics Co.,Ltd.	
X:XXX	± 0.05	DR: SEA	TITLE: RJ45 Connector with 10/100 Base-TX Jack/Dual USB Combo	
ANGLES	$\pm 1^\circ$	UNIT: mm	PART NO.: TRJU4101AONL	
	SCALE: 2/1	SHEET: 2/4	REV: B	DWG NO.: TRC14081102

Profile of wave solder:

REV.	ECN NO.	DESCRIPTION	DATE	APPD
A	REL		2014-08-11	

SUGGESTED PROFILE OF WAVE SOLDER FOR ROHS PRODUCT

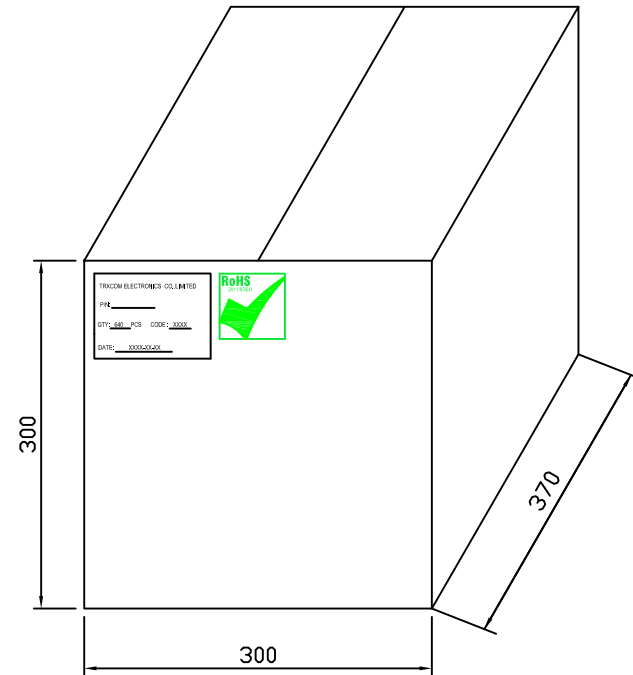
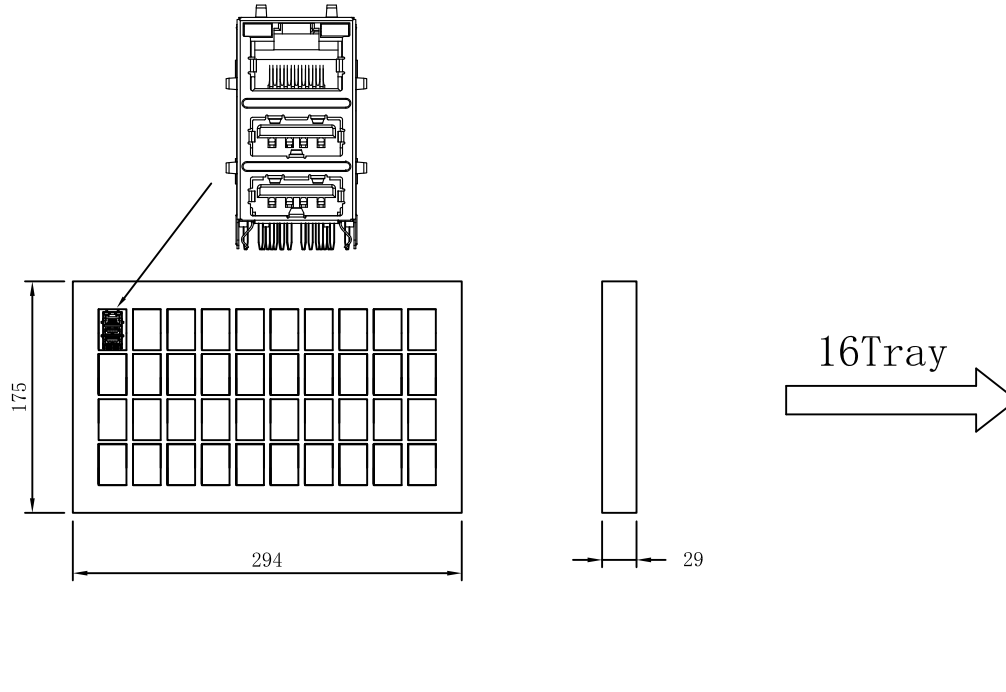


- (1) Tip Temperature: 265°C max
 - (2) Tip Temperature time: 5sec max
- Note: The melting point of Tin: 219°C

X:X ±0.25	APPD:	Trxcom
X:XX ±0.20	CHKD:	
X:XXX ±0.05	DR: SEA	TITLE: RJ45 Connector with 10/100 Base-TX Jack/Dual USB Combo
ANGLES ±1°	UNIT: mm	PART NO.: TRJU4101AONL
	SCALE: 2/1	SHEET: 3/4
	REV: B	DWG NO.: TRC14081102

Packaging:

REV.	ECN NO.	DESCRIPTION	DATE	APPD.
B	REL		2014-08-11	



- ◆ Packaging unit :40pcs/tray
- ◆ Packaging material:PVC
- ◆ Outer carton unit:640pcs/16tray/box
- ◆ Net Weight:8kg
- ◆ Gross Weight:10kg

X: X	±0.25	APPD:	Trxcom Huizhou Trxcom Electronics Co.,Ltd.	
X: XX	±0.20	CHKD:		
X: XXX	±0.05	DR: SEA	TITLE: RJ45 Connector/Dual USB Combo	
ANGLES	±1°	UNIT: mm	PART NO.: TRJU4101AONL	
	SCALE: 2/1	SHEET: 4/4	REV: B	DWG NO.: TRC14081102