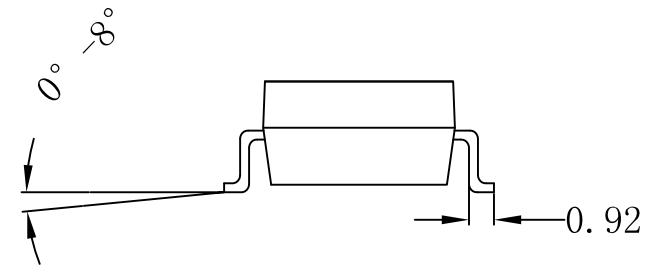
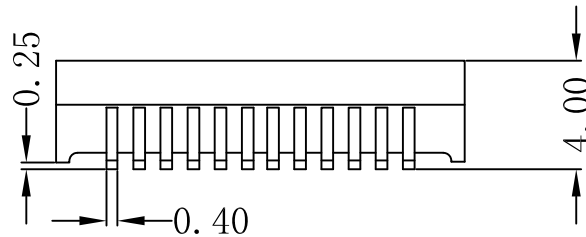
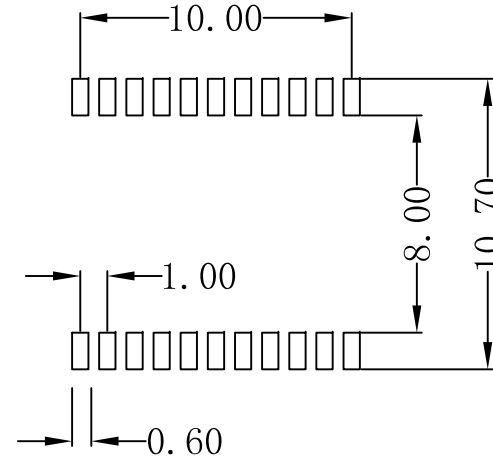
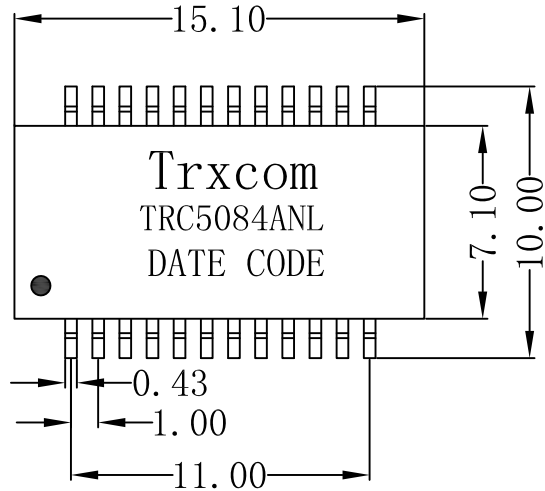


Mechanical:

REV.	ECN NO.	DESCRIPTION	DATE	APPD
A	REL		2012-05-15	



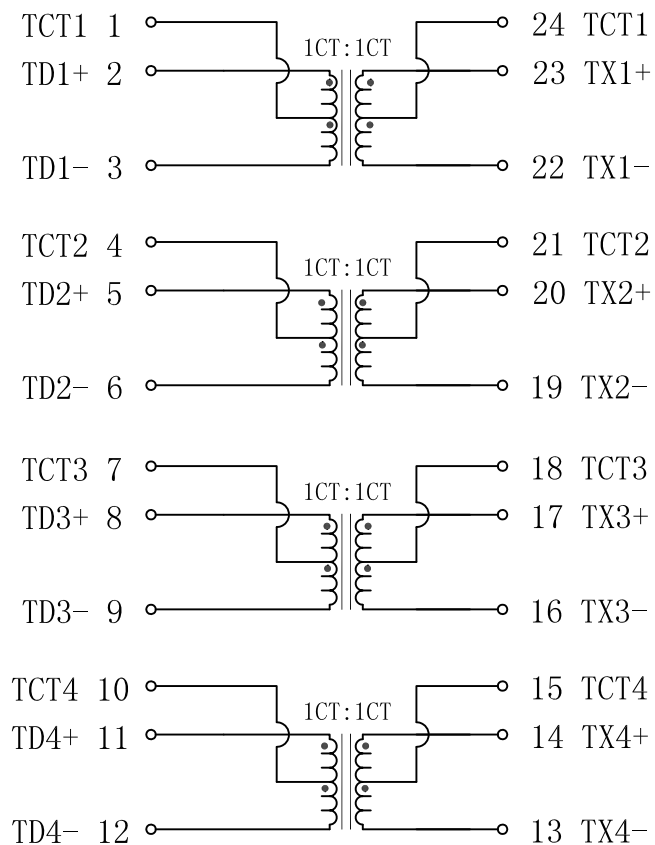
NOTES:

1. Designed to support application, such as SOHO (ADSL modems), LAN-on-Motherboard (LOM), hub and Switches.
2. Meets IEEE 802.3 specification.
3. Maximun reflow temperature is 250°C, 5 Sec.
4. UL certification: file number E321120.

X:X	APPD:	<b>Trxcom</b>		
X:XX ±0.25	CHKD:	HuiZhou Trxcom Electronics Co., ltd		
X:XXX	DR: SEA	TITLE: 100/1000Base-T Magnetics Modules		
ANGLES ±1°	UNIT: mm	PART NO.: TRC5084ANL		
	SCALE: 2/1	SHEET: 1/2	REV: A	DWG NO.: TRC15121401

# Schematic:

REV.	ECN NO.	DESCRIPTION	DATE	APPD
A	REL		2012-05-15	



## Electrical Specifications @25°C

- Turn Ratio (TX/RX):  
Pri : Sec = 1CT : 1CT  $\pm 5\%$
- Inductance OCL:  
350uH Min, 100KHz/0.1V 8mA DC Bias.
- Insertion Loss:  
0.1-100MHz: -1.2dB Max
- Return Loss:  
30MHz: -18dB Min  
60MHz: -12dB Min  
80MHz: -12dB Min  
100MHz: -10dB Min
- Crosstalk:  
30MHz: -43dB Min  
60MHz: -37dB Min  
100MHz: -31dB Min
- DCMR:  
30MHz: -40dB Min  
60MHz: -35dB Min  
100MHz: -30dB Min
- CCMR:  
30MHz: -30dB Min  
60MHz: -23dB Min  
100MHz: -17dB Min
- Isolation Voltage: 1500Vrms
- Operating Temperature: -40°C ~ +85°C.



X:X	APPD:	<b>Trxcom</b>		
X:XX $\pm 0.25$	CHKD:	HuiZhou Trxcom Electronics Co., ltd		
X:XXX	DR: SEA	TITLE: 100/1000Base-T Magnetics Modules		
ANGLES $\pm 1^\circ$	UNIT: mm	PART NO.: TRC5084ANL		
	SCALE: 2/1	SHEET: 2/2	REV: A	DWG NO.: TRC15121401