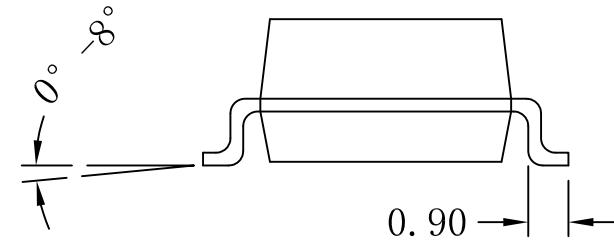
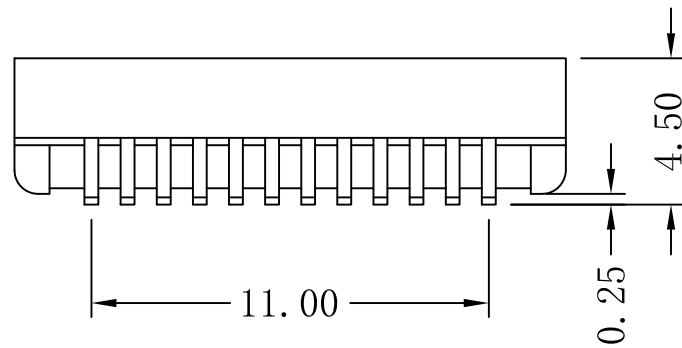
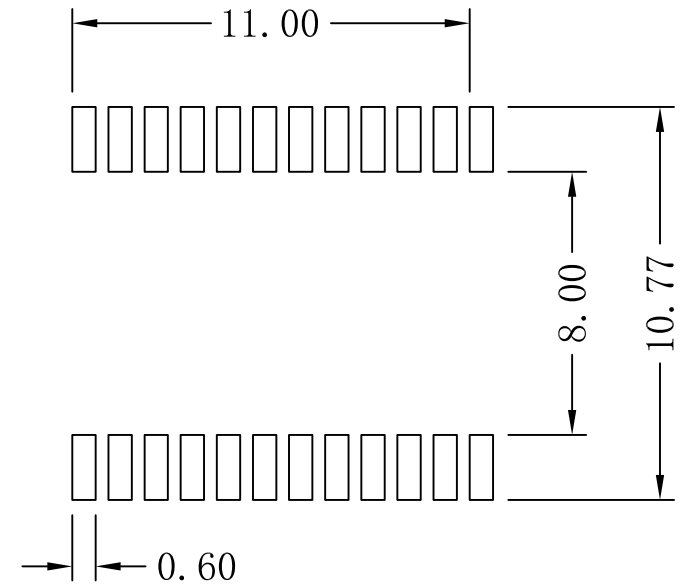
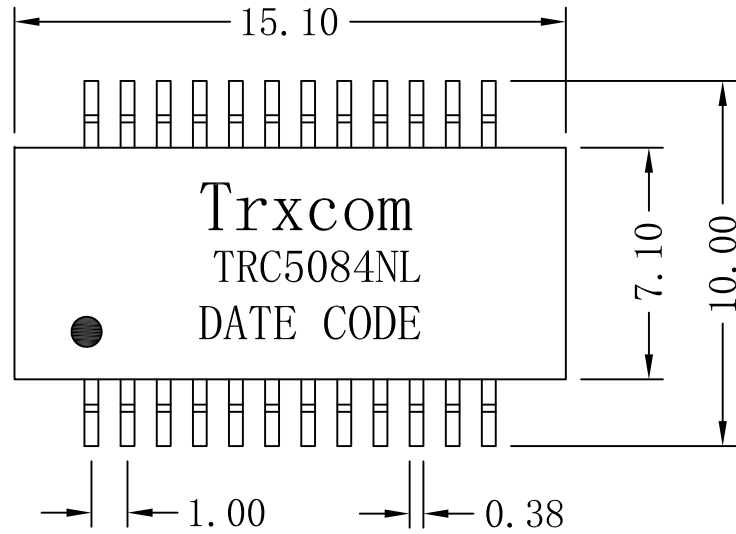


Mechanical:

REV.	ECN NO.	DESCRIPTION	DATE	APPD
A	REL		2015-06-09	



NOTES:

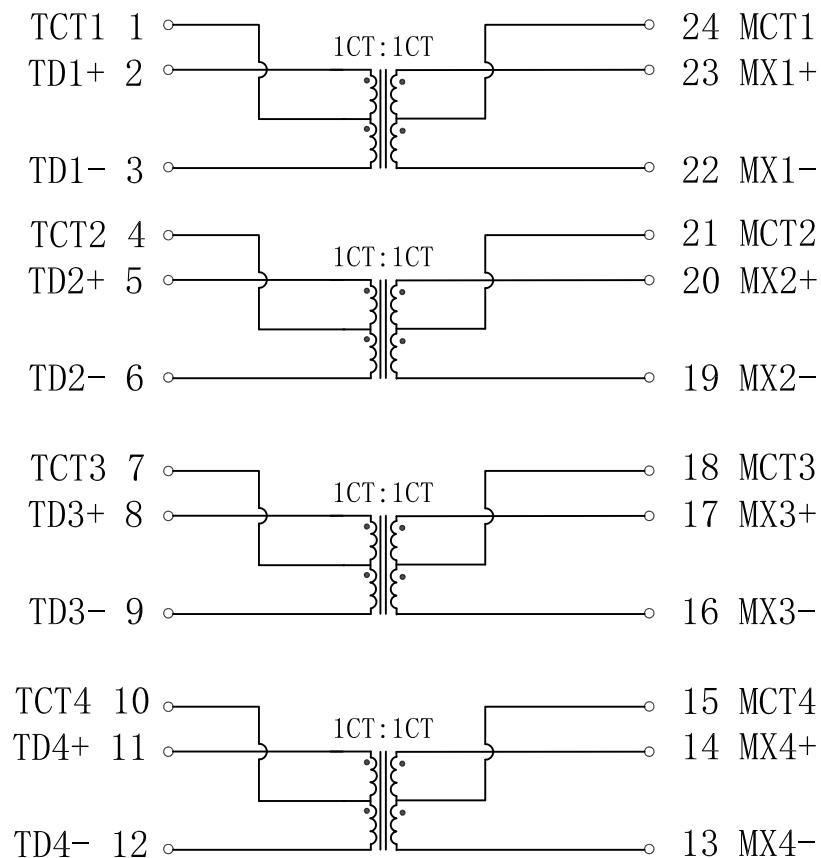
1. Designed to support application, such as SOHO (ADSL modems), LAN-on-Motherboard (LOM), hub and Switches.
2. Meets IEEE 802.3 specification.
3. Maximun reflow temperature is 250°C, 5 Sec.
4. UL certification: file number E321120



X:X	APPD:	Trxcom		
X:XX ±0.25	CHKD:	HuiZhou Trxcom Electronics Co., ltd		
X:XXX	DR: GRANT	TITLE: 1000Base-T Magnetics Modules		
ANGLES ±1°	UNIT: mm	PART NO.: TRC5084NL		
	SCALE: 2/1	SHEET: 1/2	REV: A	DWG NO.: TRC10070633

Schematic:

REV.	ECN NO.	DESCRIPTION	DATE	APPD
A	REL		2015-06-09	



Electrical Specifications @25°C

- Turn Ratio($\pm 2\%$):
Pri:Sec = 1CT:1CT
- Inductance OCL:
350uH Min, 100KHz/0.1V 8mA DC BLAS
- Insertion Loss:
1-100MHz:-1.0dB Max
- Return Loss:
1-30MHz:-18dB Min
40MHz:-18dB Min
50MHz:-18dB Min
60-80MHz:-16dB Min
100MHz:-10dB Min
- Crosstalk:
30MHz:-45dB Min
60MHz:-40dB Min
100MHz:-35dB Min
- DCMR:
30MHz:-43dB Min
60MHz:-37dB Min
100MHz:-33dB Min
- Isolation Voltage: 1500Vrms.
- Operating Temperature: 0°C~70°C.



X:X	APPD:	Trxcom		
X:XX ±0.25	CHKD:	HuiZhou Trxcom Electronics Co.,ltd		
X:XXX	DR: GRANT	TITLE: 1000Base-T Magnetics Modules		
ANGLES ±1°	UNIT: mm	PART NO.: TRC5084NL		
	SCALE: 2/1	SHEET: 2/2	REV: A	DWG NO.: TRC10070633