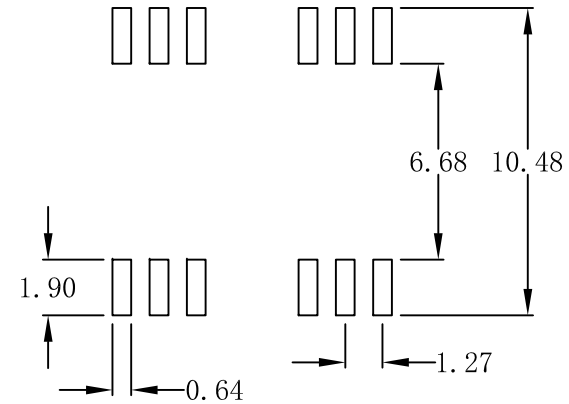
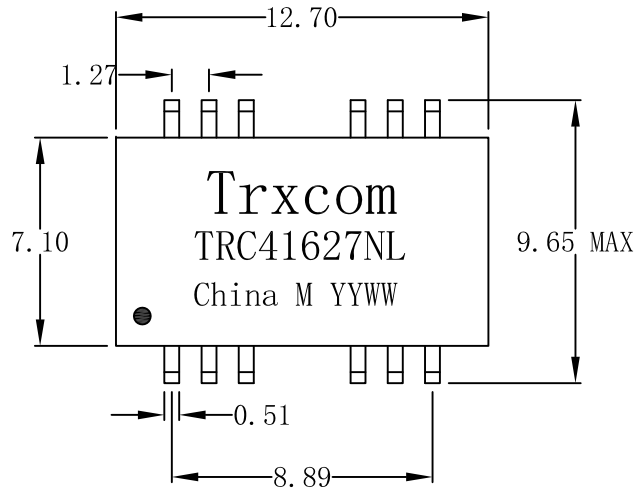
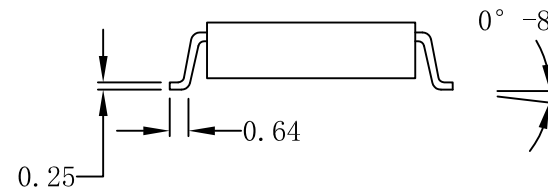
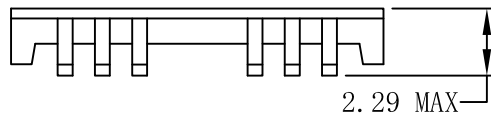


# Mechanical :

| REV. | ECN NO. | DESCRIPTION | DATE       | APPD |
|------|---------|-------------|------------|------|
| A    | REL     |             | 2013-02-12 |      |



SUGGESTED PAD LAYOUT



## NOTES :

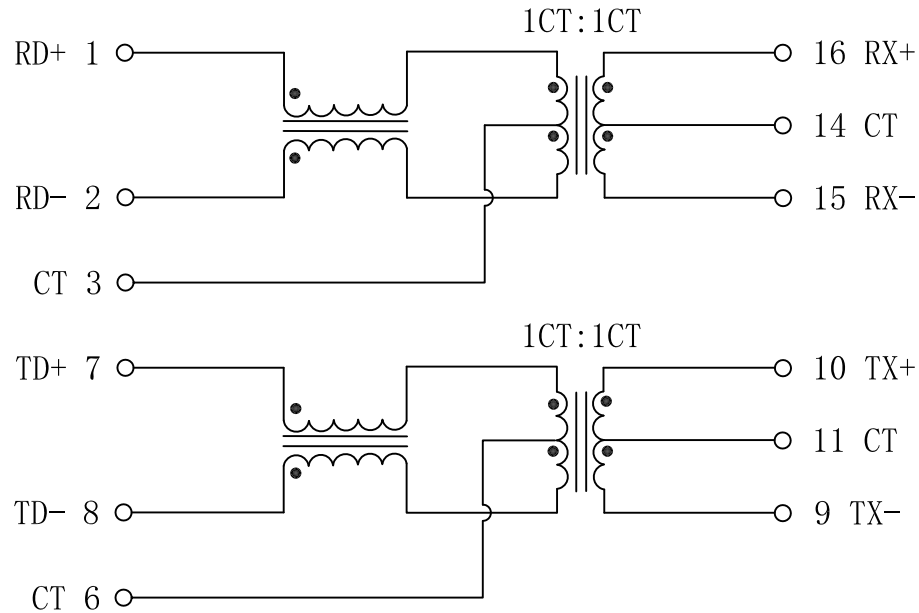
1. Designed to support application, such as SOHO (ADSL modems), LAN-on-Motherboard (LOM), hub and Switches.
2. Meets IEEE 802.3 specification.
3. Maximum reflow temperature is 250°C, 5 Sec.
4. UL certification: file number E321120



|            |            |   |        |                     |
|------------|------------|---|--------|---------------------|
| X:X        | APPD:      | <b>Trxcom</b>                                   |        |                     |
| X:XX ±0.25 | CHKD:      | Huizhou Trxcom Electronics Co., Ltd             |        |                     |
| X:XXX      | DR: SEA    | TITLE: 10/100 Base PC Card Lan Magnetic Modules |        |                     |
| ANGLES ±1° | UNIT: mm   | PART NO.: TRC41627NL                            |        |                     |
|            | SCALE: 4/1 | SHEET: 1/4                                      | REV: A | DWG NO.: TRC1302126 |

# Schematic:

| REV. | ECN NO. | DESCRIPTION | DATE       | APPD |
|------|---------|-------------|------------|------|
| A    | REL     |             | 2013-02-12 |      |



## Electrical Specifications @25°C

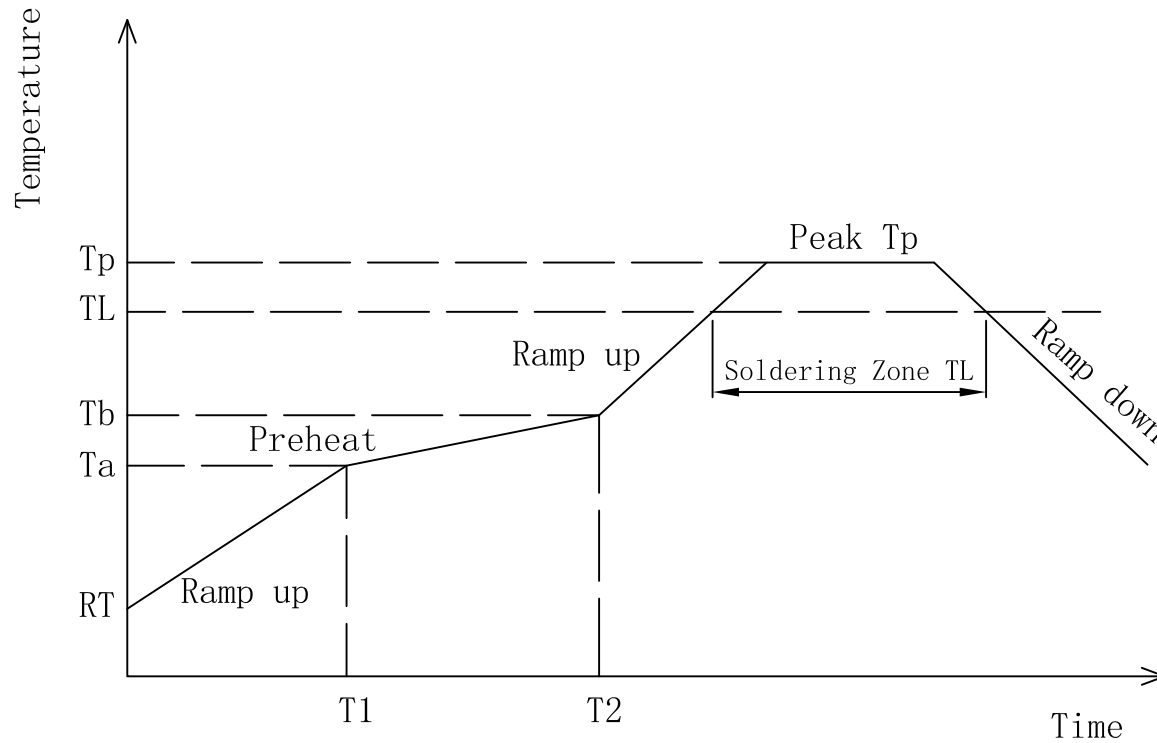
- Turns Ratio:  
TX=1CT : 1CT      RX=1CT : 1CT
- OCL: 350uH Min. @100KHz, 200mV
- Insertion Loss:  
0.1-100MHz:-1.1dB Max
- Return Loss:  
30MHz:-16dB Min  
60MHz:-12dB Min  
80MHz:-11dB Min
- Crosstalk:  
30MHz:-50dB Min  
60MHz:-45dB Min  
100MHz:-40dB Min
- DCMR:  
30MHz:-35dB Min  
50MHz:-33dB Min  
100MHz-150MHz:-20dB Min
- Hipot: 1500Vrms Min
- Operating Temperature: 0°C ~ 70°C.



|            |            |   |        |                     |
|------------|------------|---|--------|---------------------|
| X:X        | APPD:      | <b>Trxcom</b>                                   |        |                     |
| X:XX ±0.25 | CHKD:      | Huizhou Trxcom Electronics Co., Ltd             |        |                     |
| X:XXX      | DR: SEA    | TITLE: 10/100 Base PC Card Lan Magnetic Modules |        |                     |
| ANGLES ±1° | UNIT: mm   | PART NO.: TRC41627NL                            |        |                     |
|            | SCALE: 4/1 | SHEET: 2/4                                      | REV: A | DWG NO.: TRC1302126 |

# IR Reflow:

| REV. | ECN NO. | DESCRIPTION | DATE       | APPD |
|------|---------|-------------|------------|------|
| A    | REL     |             | 2013-02-12 |      |



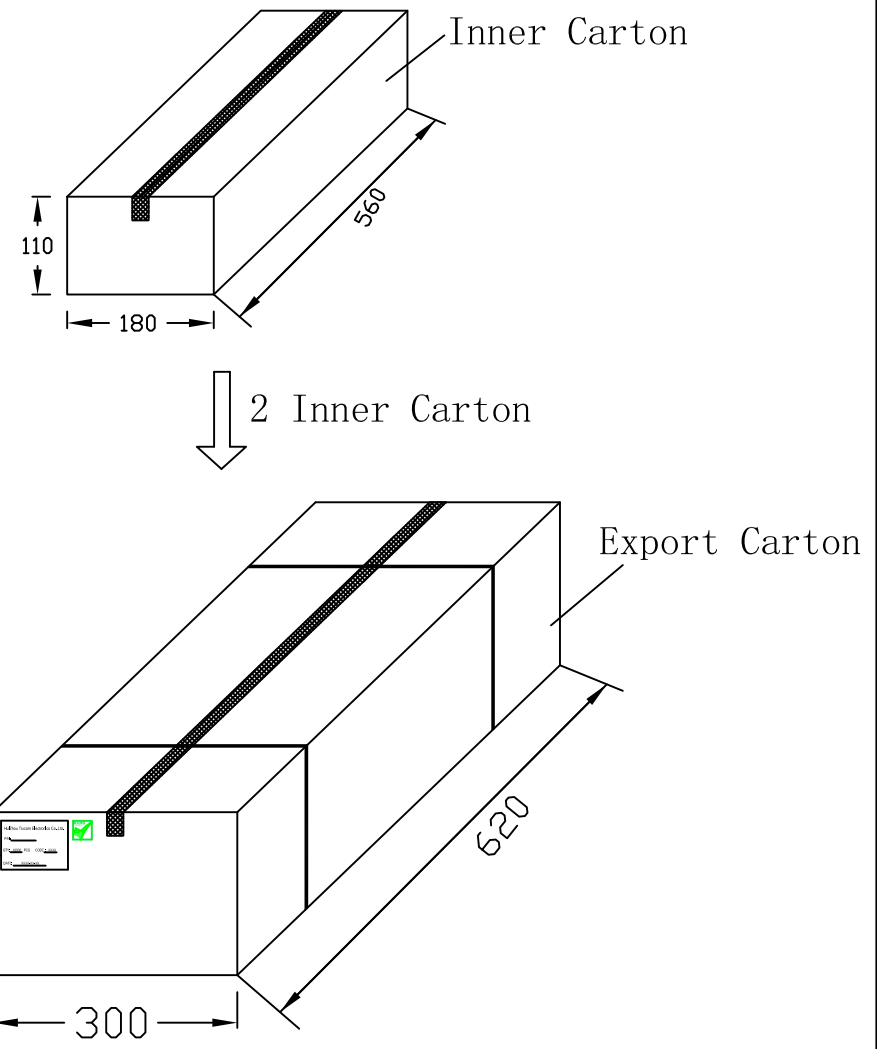
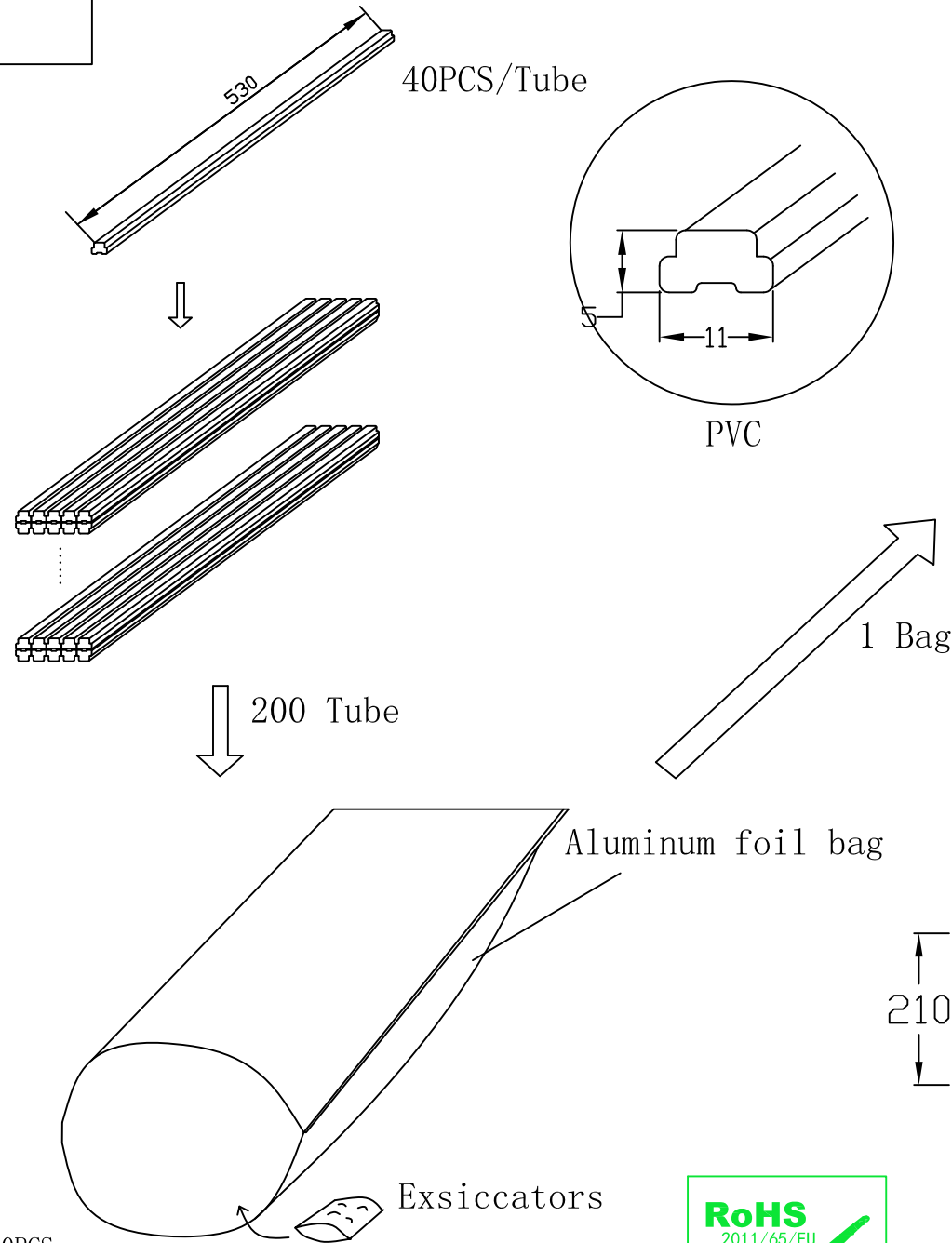
- ◆ Preheat:  
Temperature (Ta-Tb) : 150-200°C  
Time (t1-t2) : 60-180s
- ◆ Holding Temperature: 217°C  
Time (TL) : 60-150s
- ◆ Max Temperature (Tp) : 250 (+0/-5°C)  
Max Time (Tp) : 30s
- ◆ The average speed: 3°C/S Max  
The average cooling speed: 6°C/S Max
- ◆ From 25°C to Products out of the furnace: 6 minutes Max



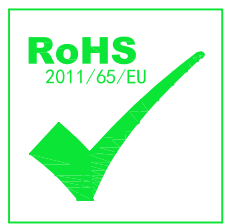
|            |            |   |        |                     |
|------------|------------|---|--------|---------------------|
| X:X        | APPD:      | <b>Trxcom</b>                                   |        |                     |
| X:XX ±0.25 | CHKD:      | Huizhou Trxcom Electronics Co., Ltd             |        |                     |
| X:XXX      | DR: SEA    | TITLE: 10/100 Base PC Card Lan Magnetic Modules |        |                     |
| ANGLES ±1° | UNIT: mm   | PART NO.: TRC41627NL                            |        |                     |
|            | SCALE: 4/1 | SHEET: 3/4                                      | REV: A | DWG NO.: TRC1302126 |

# Packing:

| REV. | ECN NO. | DESCRIPTION | DATE       | APPD |
|------|---------|-------------|------------|------|
| A    | REL     |             | 2013-02-12 |      |



- ◆ 1 Tube = 40PCS
- ◆ 1 Inner Carton = 200Tube =8000PCS
- ◆ 1 Export Carton = 2 Inner Carton =16000PCS
- ◆ Net Weight: 10kg
- ◆ Gross Weight: 17kg



|            |            |   |        |                     |
|------------|------------|---|--------|---------------------|
| X:X        | APPD:      | <b>Trxcom</b>                                   |        |                     |
| X:XX ±0.25 | CHKD:      | Huizhou Trxcom Electronics Co.,Ltd              |        |                     |
| X:XXX      | DR: SEA    | TITLE: 10/100 Base PC Card Lan Magnetic Modules |        |                     |
| ANGLES ±1° | UNIT: mm   | PART NO.: TRC41627NL                            |        |                     |
|            | SCALE: 4/1 | SHEET: 4/4                                      | REV: A | DWG NO.: TRC1302126 |