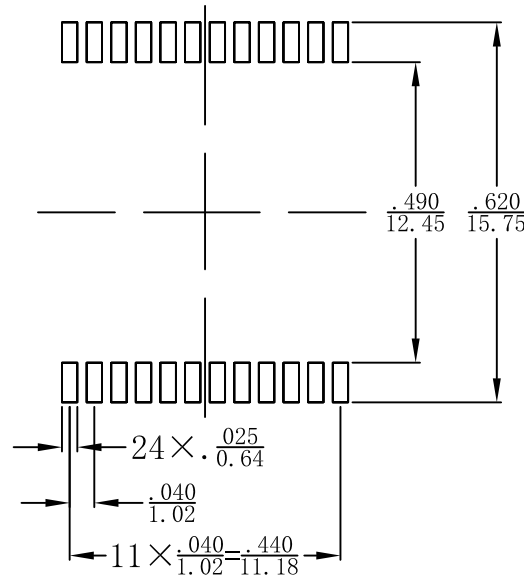
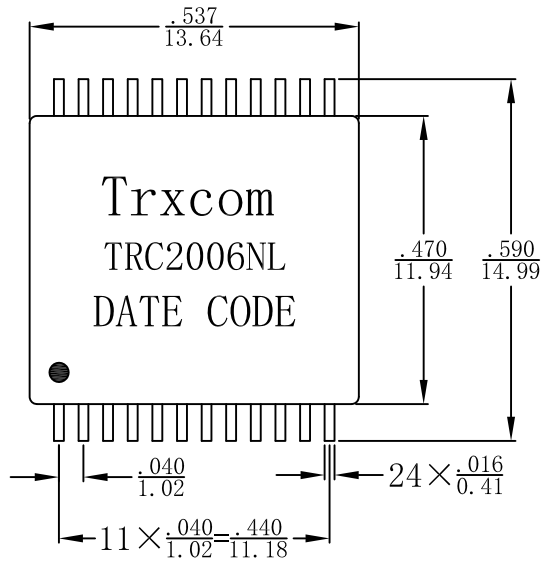


Mechanical:

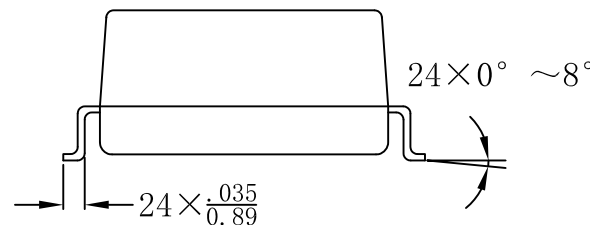
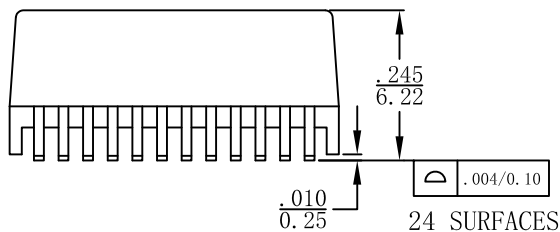
REV.	ECN NO.	DESCRIPTION	DATE	APPD
A	REL		2011/03/14	



SUGGESTED PAD LAYOUT

NOTES:

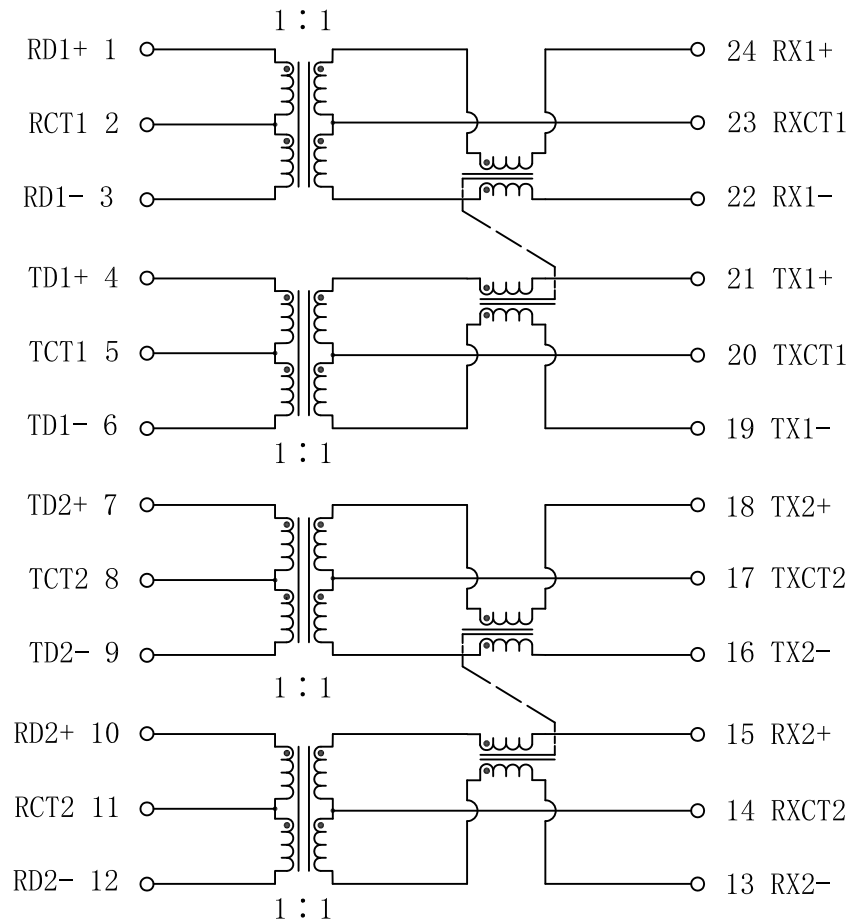
1. Designed to support application, such as SOHO (ADSL modems), LAN-on-Motherboard (LOM), hub and Switches.
2. Power over Ethernet (PoE) Magnetics
3. Current Capability: 350mA.
4. With various Turns Ratios.
5. Maximum reflow temperature is 250°C, 5 Sec.
6. UL Certification: File Number E321120.



X:X	APPD:	Trxcom		
X:XX ±0.25	CHKD:	Huizhou Trxcom Electronics Co., ltd		
X:XXX	DR: SEA	TITLE: 10/100Base-TX VoIP Magnetics Modules For PoE Application		
ANGLES ±1°	UNIT: mm	PART NO.: TRC2006NL		
	SCALE: 2/1	SHEET: 1/2	REV: A	DWG NO.: TRC11031418

Schematic:

REV.	ECN NO.	DESCRIPTION	DATE	APPD
A	REL		2011/03/14	



Electrical Specifications @25°C

- Turns Ratios:
TX = 1CT:1CT RX = 1CT:1CT
- OCL: 350uH min
@100KHz 0.1V 8mA
- Insertion Loss:
1-100MHz:-1.2dB max
- Return Loss(dB min @100Ω):
1-30MHz:-16 40MHz:-14
50MHz:-13 60-80MHz:-12
- Crosstalk(dB min):
30MHz:-43 60MHz:-37
100MHz:-31
- Differential to Common Mode Rejection:
30MHz:-43dB min 60MHz:-37dB min
100MHz:-33dB min
- Isolation Voltage: 1500Vrms min
- Operating Temperature: 0°C~70°C.



X:X	APPD:	Trxcom		
X:XX ±0.25	CHKD:	Huizhou Trxcom Electronics Co.,ltd		
X:XXX	DR: SEA	TITLE: 10/100Base-TX VoIP Magnetics Modules For PoE Application		
ANGLES ±1°	UNIT: mm	PART NO.: TRC2006NL		
	SCALE: 2/1	SHEET: 2/2	REV: A	DWG NO.: TRC11031418