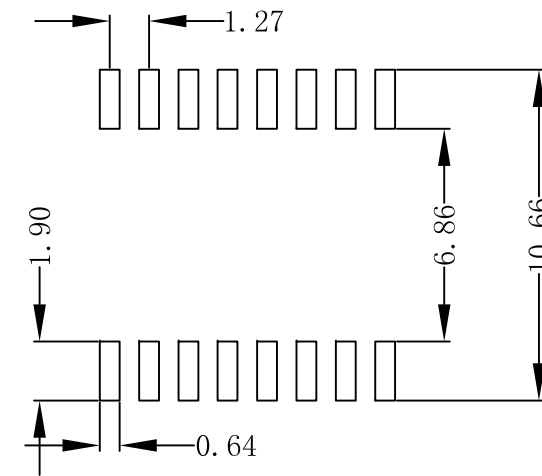
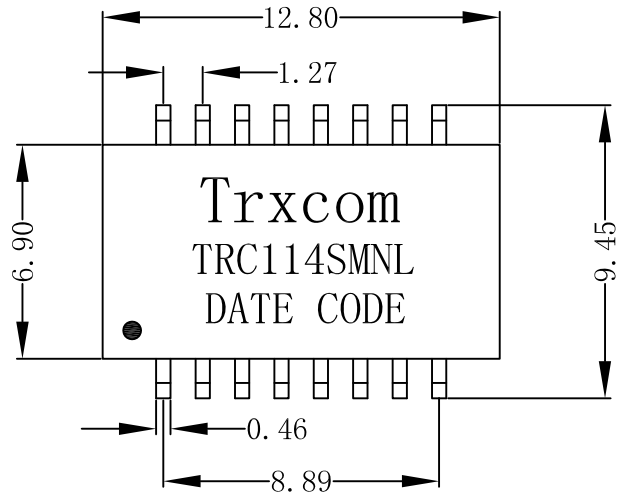
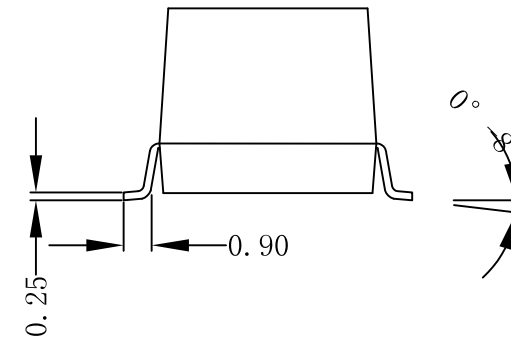
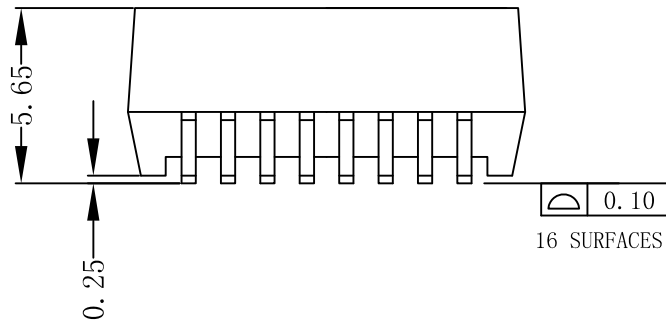


Mechanical :

REV.	ECN NO.	DESCRIPTION	DATE	APPD
A	REL		18/06/2009	



SUGGESTED PAD LAYOUT



Dimensions: mm

Unless otherwise specified, all tolerances are ± 0.25

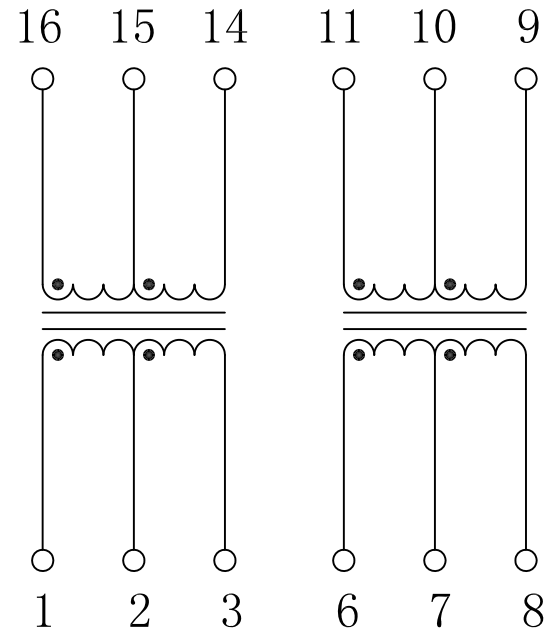
NOTES :

1. Designed to support application, such as SOHO (ADSL modems), LAN-on-Motherboard (LOM), hub and Switches.
2. Meets IEEE 802.3 specification.
3. Maximun reflow temperature is 250°C, 5 Sec.
4. UL certification: file number E321120

X:X	APPD:	Trxcom		
X:XX	CHKD:	Huizhou Trxcom Electronics Co., ltd		
X:XXX	DR: C. H. Y	TITLE: 10 Base-T Isolation Transformer		
ANGLES $\pm 1^\circ$	UNIT: mm	PART NO.:	TRC114SMNL	
	SCALE: 2/1	SHEET: 1/2	REV: A	DWG NO.: TRC09061819

Schematic:

REV.	ECN NO.	DESCRIPTION	DATE	APPD
A	REL		18/06/2009	



Electrical Specifications @25°C

- Turns Ratio ($\pm 5\%$):
TX=1CT:1CT RX=1CT:1CT
- Primary Pins: 1-3, 6-8.
- Sine Wave Inductance OCL:
200uH MIN at 20mVrms, 100KHz.
- Interwinding Capacitance Cww:
12pF MAX at 20mVrms, 100KHz
- Leakage Inductance LL:
0.3uH MAX at 20mVrms, 100KHz
- DCR: 0.3Ω.
- Hipot: 2000Vrms
- Operating Temperature: 0°C ~ 70°C.



X:X	APPD:	Trxcom		
X:XX	CHKD:	Huizhou Trxcom Electronics Co., ltd		
X:XXX	DR: C.H.Y	TITLE: 10 Base-T Isolation Transformer		
ANGLES ±1°	UNIT: mm	PART NO.: TRC114SMNL		
	SCALE: 2/1	SHEET: 2/2	REV: A	DWG NO.: TRC09061819