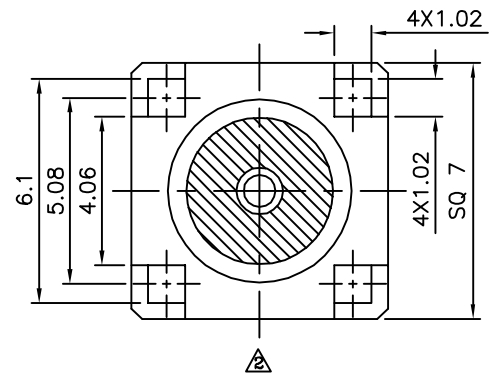


Recommended P.C.B. Layout

**△ SPECIFICATION**

Impedance:50 Ohms  
 Frequency Range:DC~6GHz  
 V.S.W.R:1.50 Max.  
 Working Voltage:500V  
 Dielectric Withstand Voltage:AC 1500V  
 At 1 Minute  
 Insulation Resistance:5000 Megaohms Min.  
 At DC 500V  
 Contact Resistance:Center Contact:3.0 Milliohms Max.  
 Outer Contact:2.0 Milliohms Max.  
 At DC 10mA  
 Temperature Range:-55°C~+165°C  
 RoHS Compliant



SMA - J R 50 - BR - H  
 (1) (2) (3) (4) (5) (6)

- (1) SMA:SMA Connector
- (2) J:Jack
- (3) R:DIP Right Angle
- (4) 50:50 Ohms
- (5) BR:Brass Body
- (6) H:RoHS Compliant

No.	Description	Q'ty	Material	Remark
⑤	Insulator	1	Teflon	
④	Body	1	Brass	Gold Plated Over Nickel
③	Center Pin	1	Phosphor Bronze	Gold Plated Over Nickel
②	Insulator	1	Teflon	
①	Body	1	Brass	Gold Plated Over Nickel



A MEMBER OF AUK GROUP  
**太聯事業股份有限公司**  
**AUK CONTRACTORS CO., LTD.**

CATEGORY		APPROVED BY EMILY	
PART No. SMA-JR50-BR-H		CHECKED BY HZF	
DRAWING No. SMA-JR50-BR-H		DRAWING BY GAO	
SCALE	NONE	REV.	A2

UNLESS OTHERWISE SPECIFIED TOLERANCES ARE  
 X. ±0.4  
 .X ±0.4  
 .XX ±0.4

NO.	REV.	REVISIONS	CHK	DATE
△	A2	Modify Data	HZF	07/02/2013
△	A1	Modify Data	HZF	03/08/2012
△	A0	NEW RELEASE	HZF	12/02/2010