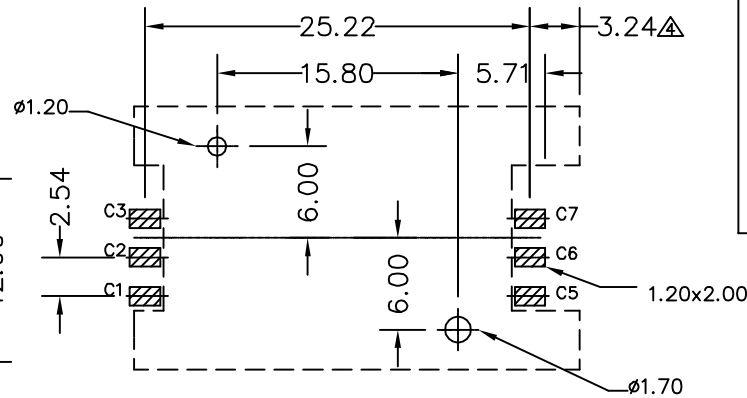
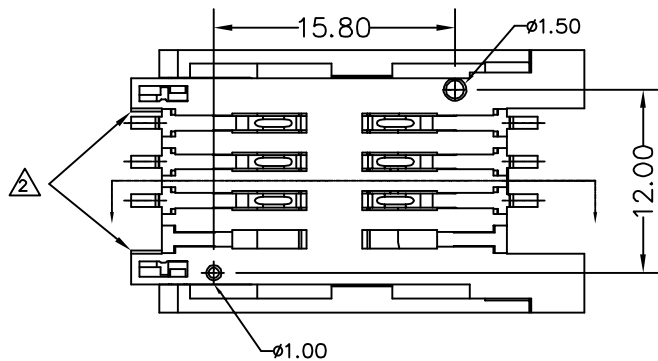
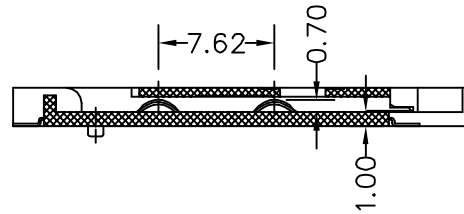
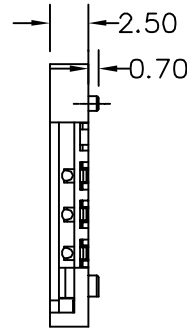
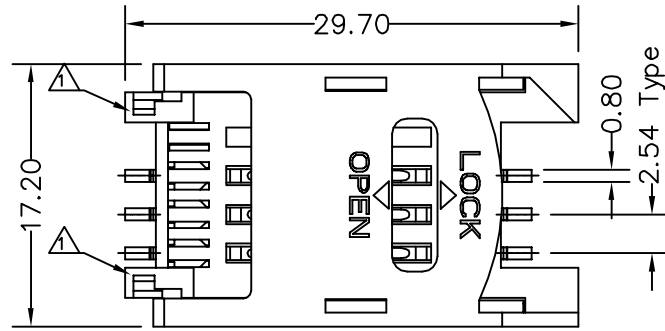


SPECIFICATIONS

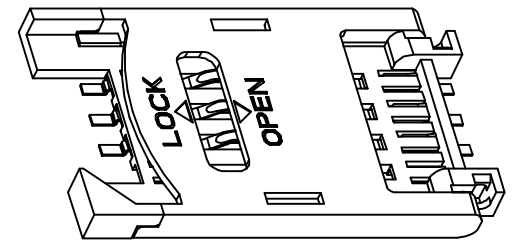
1. General Information
 - . Contact Principle: Friction Technology
 - . Mounting Type: SMT
 - . Material:
 - Data Contact: Phosphor Bronze
 - Insulator: Thermoplastic, UL94 V-0
 - . Plating:
 - Gold Plating On Contact Area
 - Tin Plating On Solder Tails
2. Electrical Specification
 - . Contact Resistance: 50 Milliohms Max.
 - . Insulation Resistance: 1000 Megohms Min.
 - . Dielectric Withstanding Voltage: 500V AC R.M.S. For 1 Minute
 - . Current Rating: 0.5A Max.
3. Mechanical Specification
 - . Contact Force: 0.2N ~ 0.6N Per Pin
 - . Contact Retention Force: 0.3kgf. Min. Per Pin
 - . Durability: 5000 Cycles
4. Environment Specification
 - . Operation Temperature: -25°C ~ +85°C
 - . Humidity: 20% ~ 95%
 - . Resistance To Soldering Heat
 - Manual Soldering: 360°C, 3 Sec. Max.
 - Vapor Phase: 215°C, 30 Sec. Max.
 - IR Reflow: 260°C, 15 Sec. Max.
 - . RoHS Compliant
5. Part No:

- SC V - W 06 A 25 - 020 R - H
- RoHS Compliant
 - Tape & Reel Packing
 - Selective Gold(Gold Flash)
 - Base Height, 2.5mm
 - Row Pitch, 25.22mm
 - No. Of Pins, 6pins
 - SMT, Right Angle Type(90°)
 - Hinged Cover
 - Sim Card/Sim Card



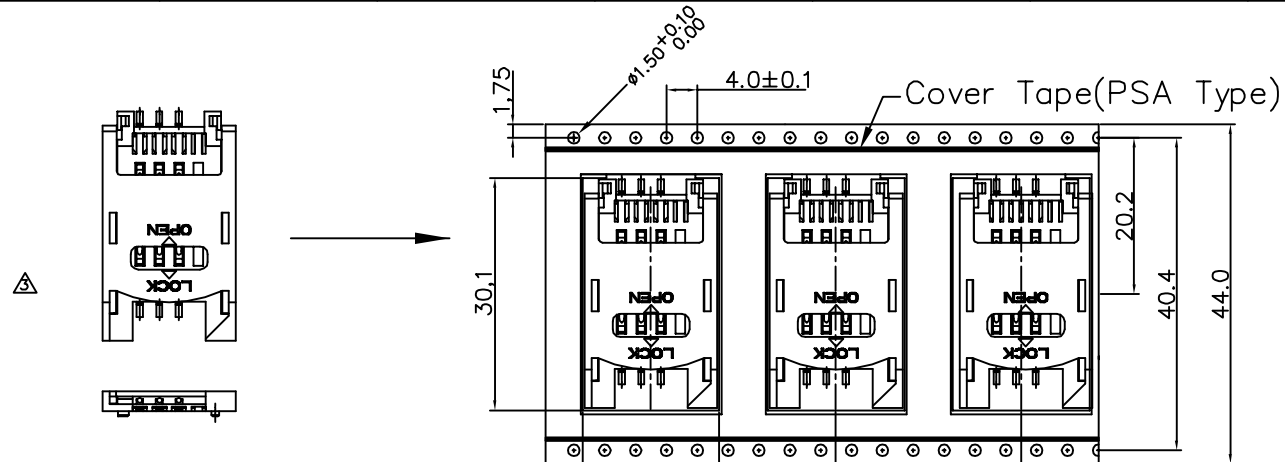
(.XX±0.05)

REFERENCE PCB LAYOUT



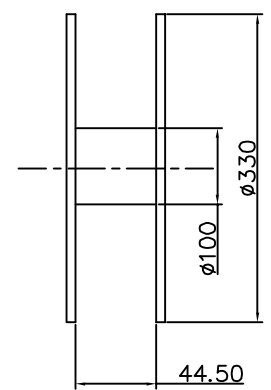
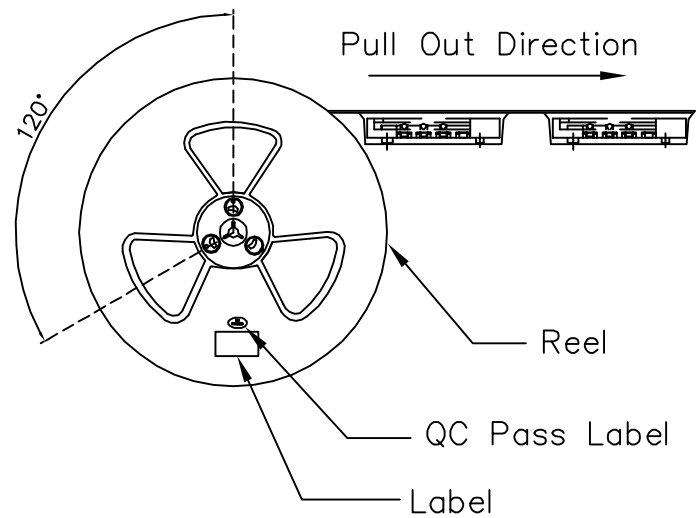
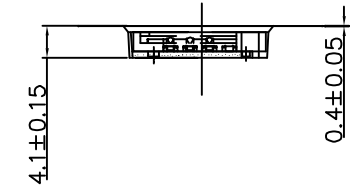
CATEGORY Smart Card/Sim Card		APPROVED BY VIVIAN		UNLESS OTHERWISE SPECIFIED TOLERANCES ARE .X ±0.38 .XX ±0.25 ANG. ±1°
PART No. SCV-W06A25-020R-H		CHECKED BY LYS		
DRAWING No. SCV-W06A25-020R-H		DRAWING BY SJH		
SCALE	NONE	REV.	A4	
UNIT	mm			

△ A4	MARKED	△ S MODIFIED	SJH	01/11/2012
△ A3	MARKED	△ S MODIFIED	QXQ	12/29/2011
△ A2	ADD CHAMFER		XSH	01/08/2008
△ A1	MODIFIED AXES		XSH	09/27/2007
△ A0	NEW RELEASE		XSH	05/21/2007
NO. REV.	REVISIONS		CHK	DATE



SPECIFICATIONS:
 Reel Size: 330*44.5 mm
 QTY: 650Pcs/Reel
 RoHS Compliant

Packing Material Description
 Polystyrene



CATEGORY SMART CARD/SIM CARD		APPROVED BY VIVIAN		UNLESS OTHERWISE SPECIFIED TOLERANCES ARE .X ±0.20 .XX ±0.10 ANG. ±1°	△ A4	MARKED △ IS MODIFIED	SJH	01/11/2012
PART No. SCV-W06A25-020R-H		CHECKED BY LYS			△ A3	MARKED △ IS MODIFIED	QXQ	12/29/2011
DRAWING No. SCV-W06A25-020R-H		DRAWING BY SJH			△ A2	ADD CHAMFER	XSH	01/08/2008
SCALE NONE		REV. A4			△ A1	MODIFIED AXES	XSH	09/27/2007
				UNIT mm	△ A0	NEW RELEASE	XSH	05/21/2007
					NO. REV.	REVISIONS	CHK	DATE