

Constant Current Driver

Model:SC42W850-1000CG-4X PRO



Model	Output Current	Input Current	Input Power	Output Power Range	PF	Efficiency (*Typical)	Output Voltage	No load Voltage
SC42W850-1000CG-4W PRO	850mA	0.18A	38.80W	20.4-35.7W	0.97	92.0%	24-42V	55V
SC42W850-1000CG-4B PRO	900mA	0.19A	41.10W	21.6-37.8W	0.97	92.0%	24-42V	55V
SC42W850-1000CG-4G PRO	950mA	0.20A	43.40W	22.8-39.9W	0.98	92.0%	24-42V	55V
	1000mA	0.21A	45.70W	24.0-42.0W	0.98	92.0%	24-42V	55V

* Test result @230V, 50Hz, Full Load.

1. Parameters

Category	Item	Technical Norm
Features	Output Type	Constant Current
	Output Features	Insulated output(SELV)
	IP Grade	IP20
	Insulation Class	IEC Class II
Input	Rated Input Voltage	220-240VAC
	Range of Input Voltage(oper. safety)	198-264VAC or 186-250VDC
	Frequency	0, 50/60Hz (performance range:47-63Hz)
	Input Current	≤0.21A (230VAC, full load)
	Input Power	≤46W (230VAC, full load)
	Power Factor	0.98 (230VAC, full load)
	THD	≤5% @(230VAC, full load)
Output	Output Voltage Range	24-42VDC
	No Load Voltage(OCV)	55VDC Max.
	Output Current	850mA -1000mA (Max. output)
	Max. Output Power	42W
	Efficiency	92.0% (230VAC, full load)
	Current Ripple(≤3KHz)	≤4% (Low frequency ripple, ≤3KHz)
	Current Accuracy	±8% (220-240VAC),±8%(198-264VAC)
	Started Delay Time	≤0.5s (230VAC, full load)
	PstLM	≤1
	SVM	≤0.4
Protection	Short Circuit Protection	Auto Recovery
	Overload Protection	Auto Recovery
	No-load Protection	Auto Recovery

	Insulation voltage	3000V 5mA 60s between P-S
	Insulation resistance	>100M ohm @ 500VDC
	Touch current	I/P to O/P <0.7mA
Environment	Ta/Operation Temperature	-20....+35°C
	Ts/Storage Temperature	-40....+75°C
	Tc (Max) /EnclosureTc point Temperature	75°C
	Humidity operational/storage	10%....90% RH
	Atmospheric pressure	86-108kPa
Construction	Connection Method	Push-in Terminal
	Installation	Independent
	SEC Wire preparation	0.5-1.5 [□] (solid core or stranded)
	Dimension	158 x 45 x31 mm (L*W*H)
Standards	Certification	ENEC/SAA/CE/EAC
	Safety Standards	EN 61347-1:2015/A1:2021 EN 61347-2-13:2014/A1:2017 EN IEC 62384:2020 EN 62493:2015/A1:2022 AS61347.2.13:2018 AS/NZS61347.1:2016 Inc A1
	EMC Standards	EN IEC 55015:2019 EN IEC 55015:2019/A11:2020 EN IEC 61000-3-2:2019/A1:2021 EN 61000-3-3:2013/A2:2021 EN IEC 61547:2023
	Performance	EN62384
	Surge	L-N/2kV, (L/N)-PE/4KV
Others	RoHS	complied to 2011/65/EU
	Life Time	73.8kh @Tc = 75°C, max. failures= 10%
	Warranty	5years
	Noise	≤ 24dB @Background noise ≤16dB, distance = 30cm

Remark:

- All Parameters, if not specified, are measured at 230VAC/50Hz and 25°C ambient temperature.
- LED Driver is a component of the luminaires, Luminaires and wire layout will affect the EMC, please check the EMC with end products again.

2. Output Current Setting

Output Current	1	2
850mA	-	-
900mA	ON	-
950mA	-	ON
1000mA	ON	ON

3. Connected quantities of different current Breaker

TYPE	Connected quantities of different current Breaker						Input Voltage	Inrush Current(A)	Time (us)
	current (A)	10	13	16	20	25			
	Installation wire diameter	1.5mm ²	2.5mm ²	2.5mm ²	4mm ²	4mm ²			
TYPE B		10	13	16	20	25	@230VAC	60	40
TYPE C		16	21	26	32	40			
TYPE D		26	33	41	51	64			

4. Label

KGP •tc PRI:220-240VAC 50/60Hz Max.0.21A
 LED Driver
 SC42W850-1000CG-4W PRO NO Load:55VDC Max.42W Fmax.50N↓
 For LED modules only tc:75°C
 Constant Current Lighting track adaptors ta:-20...+35°C

ERC

SELV

Pout [W]	Iout [mA]	λ	1	2
36	850	0.92C	-	-
38	900	0.92C	ON	-
40	950	0.92C	-	ON
42	1000	0.92C	ON	ON

KGP •tc PRI:220-240VAC 50/60Hz Max.0.21A
 LED Driver
 SC42W850-1000CG-4B PRO NO Load:55VDC Max.42W Fmax.50N↓
 For LED modules only tc:75°C
 Constant Current Lighting track adaptors ta:-20...+35°C

ERC

SELV

Pout [W]	Iout [mA]	λ	1	2
36	850	0.92C	-	-
38	900	0.92C	ON	-
40	950	0.92C	-	ON
42	1000	0.92C	ON	ON

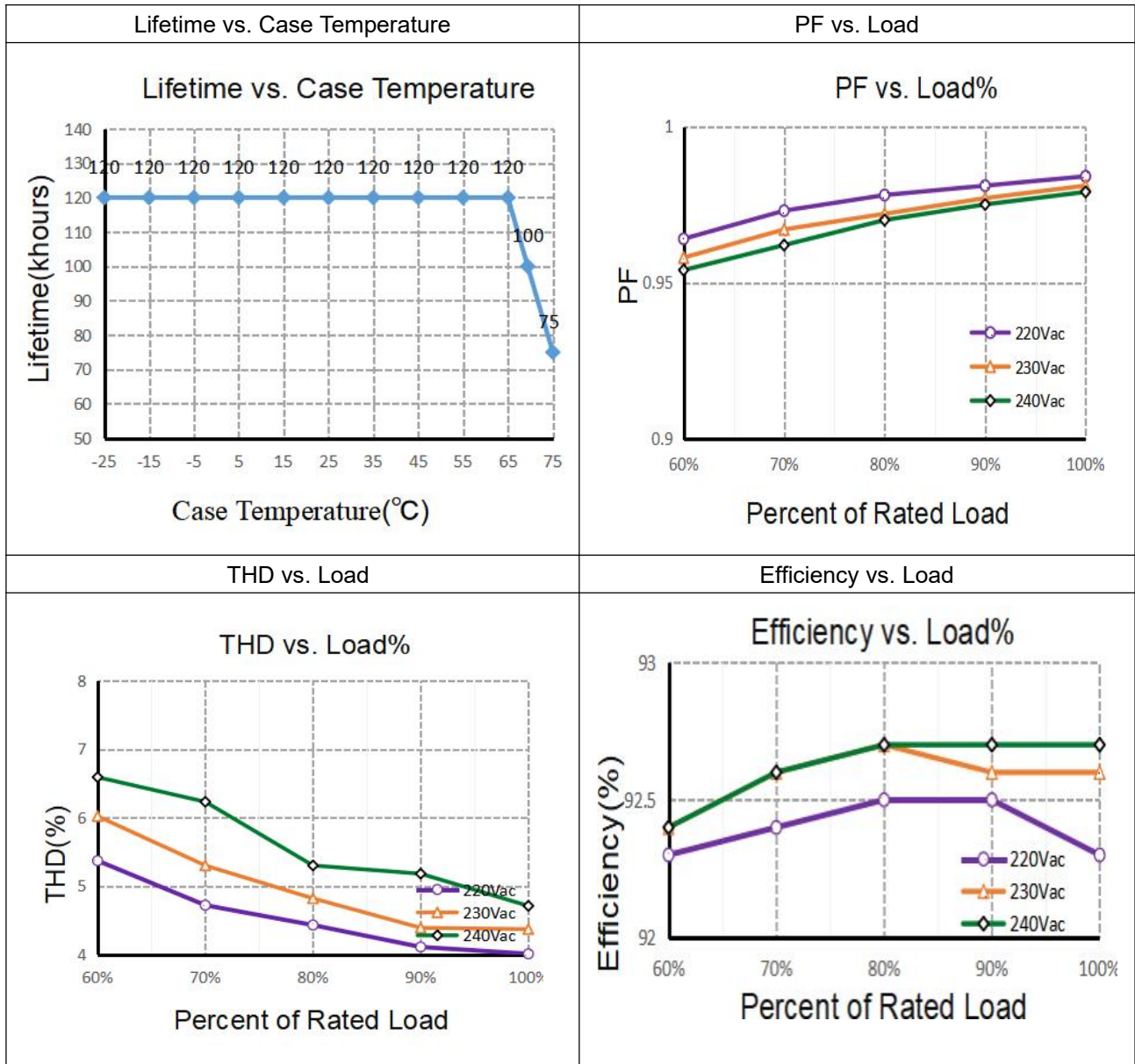
KGP •tc PRI:220-240VAC 50/60Hz Max.0.21A
 LED Driver
 SC42W850-1000CG-4G PRO NO Load:55VDC Max.42W Fmax.50N↓
 For LED modules only tc:75°C
 Constant Current Lighting track adaptors ta:-20...+35°C

ERC

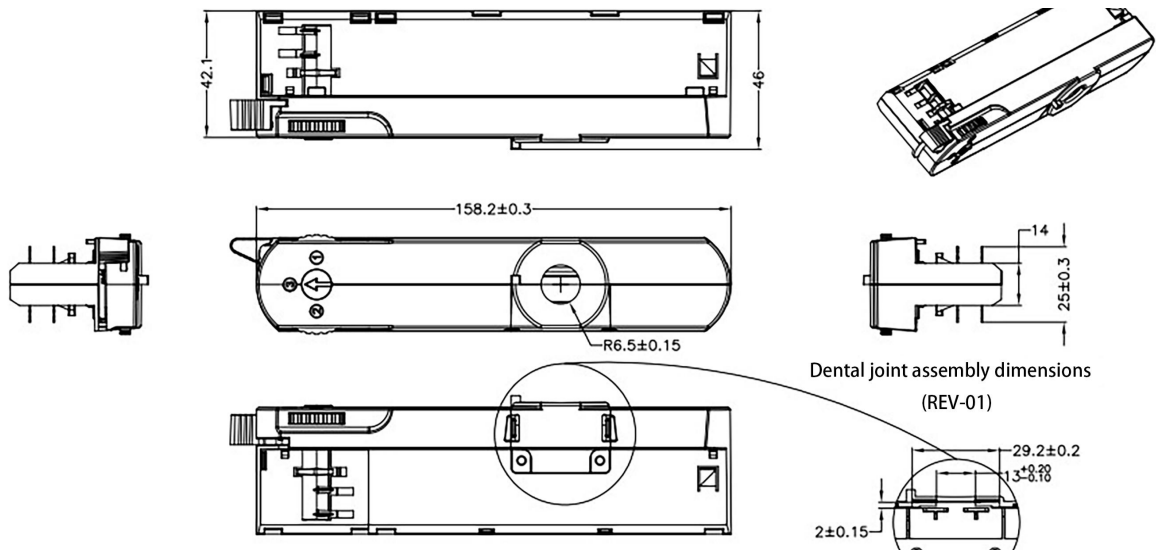
SELV

Pout [W]	Iout [mA]	λ	1	2
36	850	0.92C	-	-
38	900	0.92C	ON	-
40	950	0.92C	-	ON
42	1000	0.92C	ON	ON

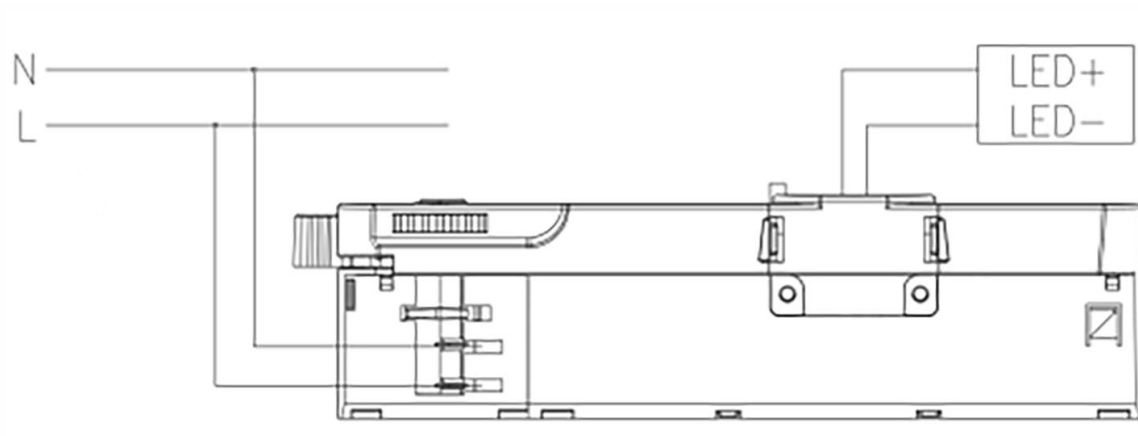
5. Electrical values



6. Dimension



7. Wiring Diagram



8. Packing information

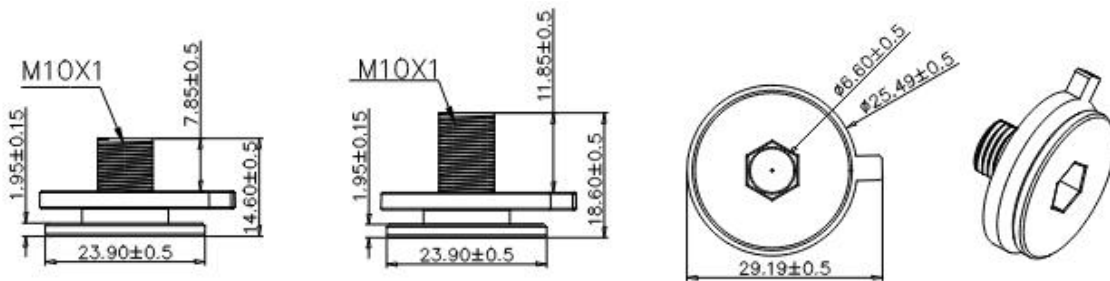
Packing way	Model	Colour	Carton L*W*H(mm)	Pcs/ Carton	Net weight/ Pcs(kg)	Net weight/ Carton(kg)	Gross weight/ Carton(kg)
industrial	SC42W850-1000CG-4W PRO	White	515*274*370	150	0.115	17.25	18.57
	SC42W850-1000CG-4B PRO	Black					
	SC42W850-1000CG-4G PRO	Grey					

9. Lamp Screw Type

- Optional threaded sleeve for luminaire mounting
- Suitable for M10x1x8 threaded nut
- Additional mounting equipment, e.g. M10x1x12
- gray, black, white
- further on request

Ordering data

Type	Colour	Article number	Qty/ctn	Weight(g)/pcs
M10x8	White	AL	PC	9.31
	Black	AL	PC	9.31
	Gray	AL	PC	9.31
M10x12	White	AL	PC	10.01
	Black	AL	PC	10.01
	Gray	AL	PC	10.01



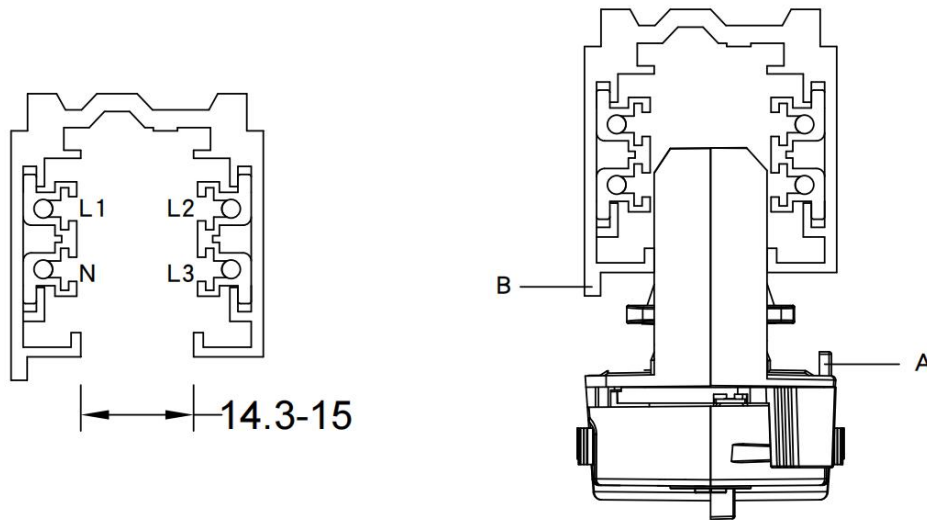
10. Suitable for following tracks

Serial number	Brand	Track model	System
1	Global	XTS11 & XTSC611	3P
2	A.A.G STUCCHI	9000A-2-ST	3P
3	Eutrac	25-106	3P
4	Unipro	T32B	3P
5	PowerGEAR	Pro-0431L	3P
6	ERCO	1079301000	3P

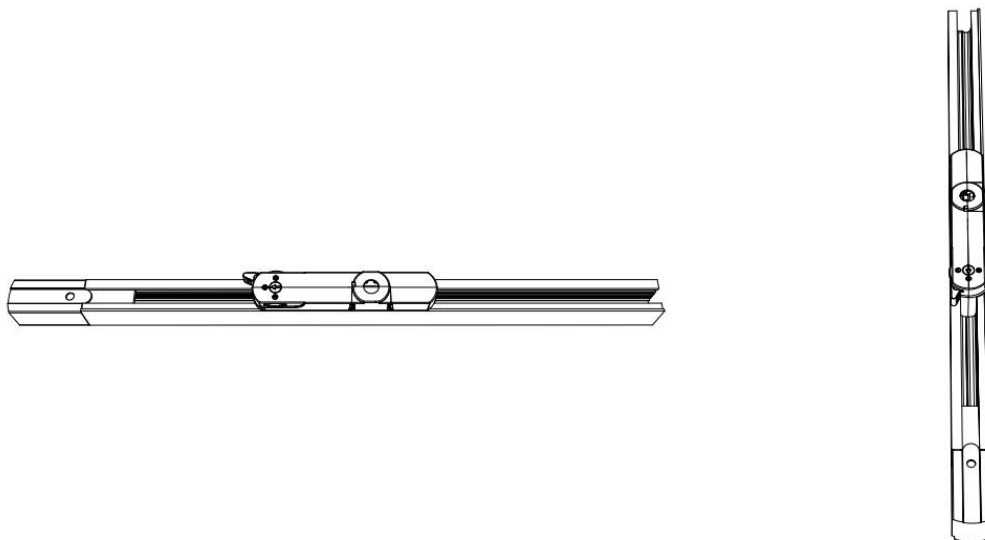
Remark:

1. The model name is XTS11 and XTSC611 tracks, and its brand is Global.
2. The model name used is the 9000A-2-ST track, and its brand is A.A.G STUCCHI.
3. The model name is 25-106 tracks, and its brand is Eutrac.
4. The model name is T32B tracks, and its brand is Unipro.
5. The model name is Pro-0431L tracks, and its brand is PowerGEAR.
6. The model name is 1079301000 tracks, and its brand is ERCO.
7. If other brands are suitable, please communicate and consult first

11. Phase track light rail specification:



12. Lighting track adapter and rail system installation diagram:



The adaptor shall be given that the use is limited to the track system specified.

13. Wiring instructions

- All connections must be kept as short as possible to ensure good EMI behaviour
- Mains leads should be kept apart from LED Driver and other leads (ideally 5 – 10 cm distance)
- Advice the maximum length of output wires is 3 m
- Secondary switching is not permitted (Except for constant voltage)
- Incorrect wiring can damage LED modules.
- The wiring must be protected against short circuits to earth (sharp edged metals parts, metal cable clips, louver, etc.)
- Hot plug-in is not supported due to residual output voltage of > 0 V up to mains voltage. Danger to life.
- When connecting an LED load, restart the device to activate the LED output.
- This can be done via mains reset or via interface (DALI, DSI, switch DIM).

14. Replace LED module

- Mains off
- Remove LED module
- Wait for 30 seconds
- Connect LED module again
- Hot plug-in or secondary switching of LEDs is not permitted and may cause a very high current to the LEDs

15. REVISION HISTORY

DATE	VER	REMARK
2024-10-17	V1.0	Initial release.
2024-11-08	V1.1	Modify authentication and electrical performance parameters.