



SCXXWXXXCG-XX

Constant Current Driver

Model: SCXXWXXXCG-XX



Model	Output Current	Input Current	Input Power	Output Power Range	PF	Efficiency	Output Voltage	No load Voltage
SC14W200-350CG-2W SC14W200-350CG-2B SC14W200-350CG-2G	200mA	0.07A	12W	3-8W	≧ 0.82	≧ 82%	15-40V	55V
	250mA	0.09A	14W	3.7-10W	≧ 0.82	≧ 82%		
	300mA	0.1A	15W	4.5-12W	≧ 0.85	≧ 85%		
	350mA	0.11A	18W	5.2-14W	≧ 0.86	≧ 86%		
SC32W500-800CG-2W SC32W500-800CG-2B SC32W500-800CG-2G	500mA	0.15A	25W	7.5-20W	≧ 0.90	≧ 86%		
	600mA	0.16A	30W	9-24W	≧ 0.92	≧ 87%		
	700mA	0.19A	34W	10.5-28W	≧ 0.95	≧ 88%		
	800mA	0.21A	39W	12-32W	≧ 0.95	≧ 88%		
SC40W700-1000CG-2W SC40W700-1000CG-2B SC40W700-1000CG-2G	700mA	0.19A	34W	10.5-28W	≧ 0.90	≧ 88%		
	800mA	0.21A	39W	12-32W	≧ 0.90	≧ 89%		
	900mA	0.24A	44W	13.5-36W	≧ 0.92	≧ 89%		
	1000mA	0.27A	48W	15-40W	≧ 0.95	≧ 89%		

* Test result @230V, 50Hz, Full Load.

1. Parameters

Category	Item	Technical Norm
Features	Output Type	Constant Current
	Output Features	Isolation
	IP Grade	IP20
	Insulation Class	Class II
Input	Rated Input Voltage	220-240VAC
	Range of Input Voltage	198-264VAC
	Frequency	50/60Hz
	Input Current	≤0.27A (198VAC, full load)
	Input Power	≤48W (220VAC, full load)
	Power Factor	≥0.95 (220VAC, full load)
	No-load Power Consumption	≤0.5W @220VAC
Output	Max. Output Power	40W
	Current Ripple(< 120 Hz)	5% (I _{max} -I _{min})/(I _{max} +I _{min})
	PstLM	≤1
	SVM	≤0.4
	Current Accuracy	±5%
	Started Delay Time	≤0.5S(220VAC, full load)

SCXXWXXXCG-XX

Protection	Short Circuit Protection	Auto Recovery
	Overload Protection	Auto Recovery
	No-load Protection	Auto Recovery
	Insulation voltage	I/P to O/P , 3KVac/1min
	Insulation resistance	>100M ohm @ 500VDC
	Leakage current	< 250μA, I/P to O/P or I/P to PE @230V input
Environment	Ta/Operation Temperature	-25....+40°C
	Ts/Storage Temperature	-30....+85°C
	Tc/Enclosure Temperature	75°C (@ 200/300/400/500MA) 85°C (@ 500/600/700/800MA) 85°C (@ 700/800/900/1000MA)
	Humidity	10%....85%RH
	Atmosphere	86-108KPa
Construction	Connection Method	Push-in Terminal
	Installation	Independent
	PRI Wire preparation	0.5-1.5 [□]
	SEC Wire preparation	0.5-1.5 [□]
	Dimension	118*34.4*45mm (L*W*H)
Standards	Certification	CE
	Safety Standards	GB 7000.1-2015 GB/T 13961-2008 GB /T17743-2017 GB 17625.1-2012 GB 19510.1-2009 GB 19510.14-2009
	EMC Standards	EN55015:2013/A1:2015,EN61000-3-2:2014, EN61000-3-3:2013,EN61547:2009
	Performance	EN62384
	Surge	L-N/2KV
Others	RoHS	Complied to 2011/65/EU
	Life Time	50000h Ta/Tc
	Warranty	5years F.R. <10000ppm
Remark 1. All Parameters, if not specified, are measured at 230VAC/50Hz and 25°C ambient temperature. 2. LED Driver is a component of the luminaires, Luminaires and wire layout will affect the EMC, please check the EMC with end products again.		

2. Connected quantities of different current Breaker

SC14W200-350CG-2W SC14W200-350CG-2B SC14W200-350CG-2G

TYPE	Connected quantities of different current Breaker						Input Voltage	Inrush Current	Time
	current (A)	10	13	16	20	25			
	Installation wire diameter	1.5mm ²	2.5mm ²	2.5mm ²	4mm ²	4mm ²			
TYPE B		40	52	64	80	100	@230VAC	15	400
TYPE C		64	83	102	128	160			
TYPE D		102	133	164	205	256			

SCXXWXXXXCG-XX

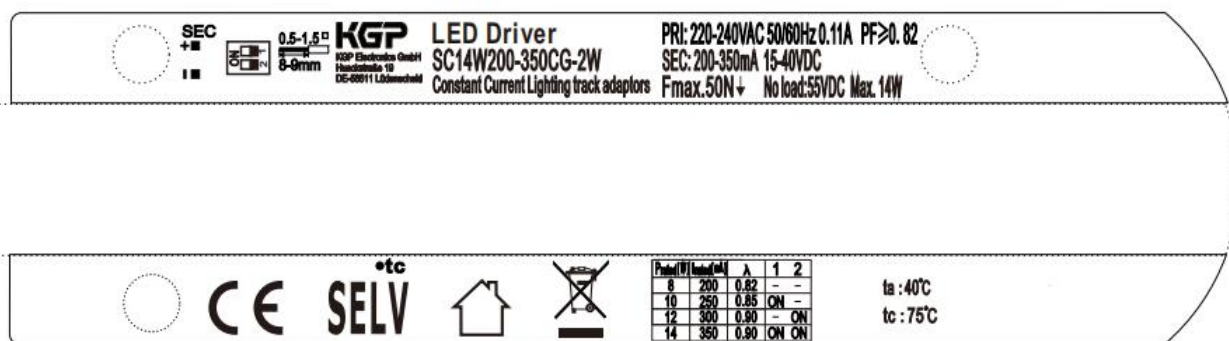
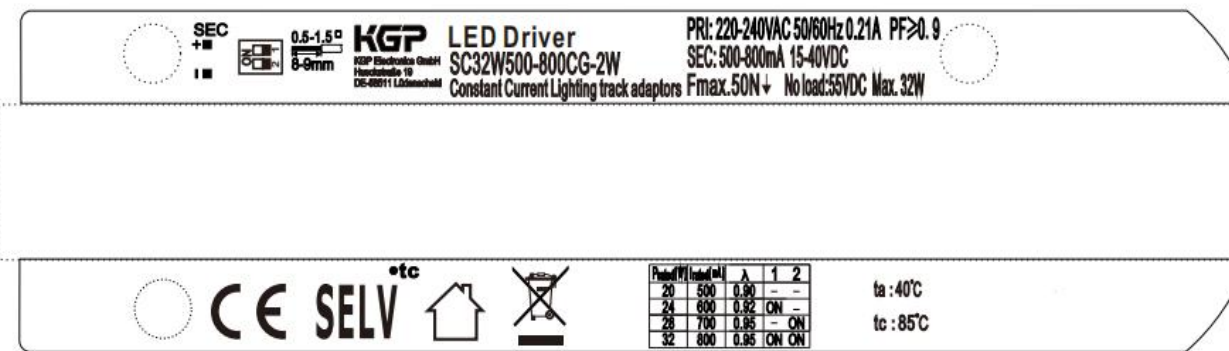
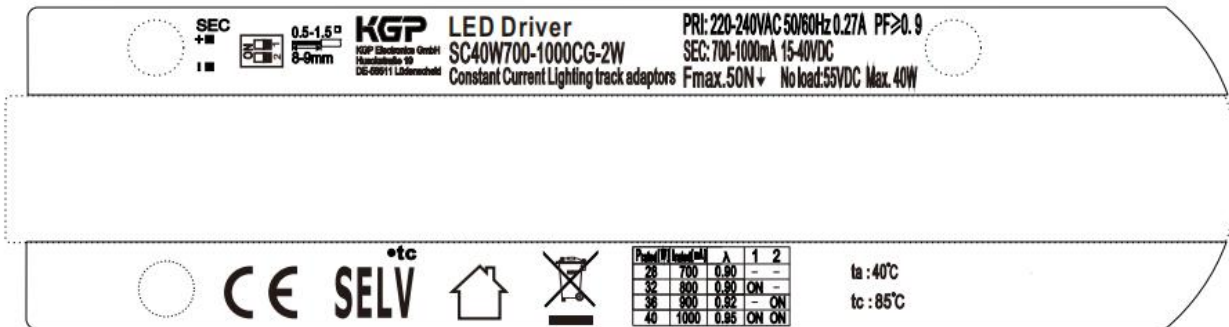
SC32W500-800CG-2W SC32W500-800CG-2B SC32W500-800CG-2G

TYPE	Connected quantities of different current Breaker						Input Voltage	Inrush Current	Time
	current (A)	10	13	16	20	25			
	Installation wire diameter	1.5mm ²	2.5mm ²	2.5mm ²	4mm ²	4mm ²			
TYPE B		30	39	48	60	75	@230VAC	20	400
TYPE C		48	62	77	96	120			
TYPE D		77	100	123	154	192			

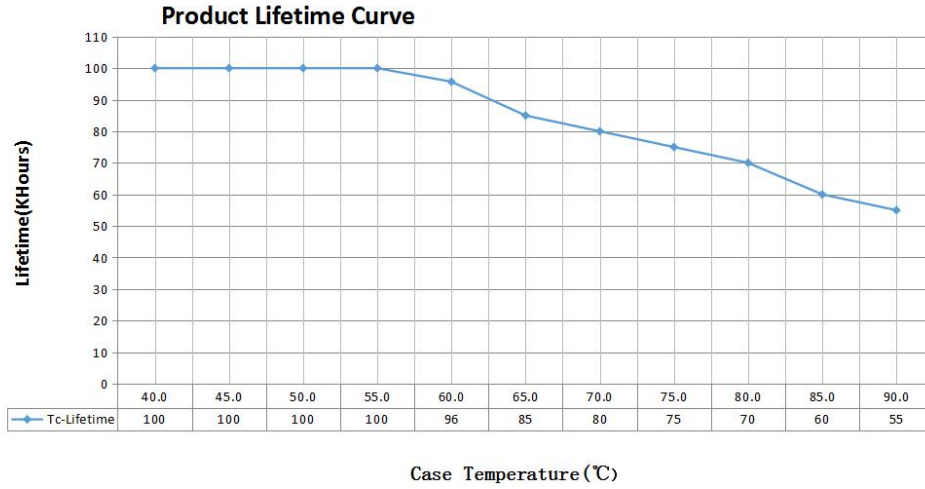
SC40W700-1000CG-2W SC40W700-1000CG-2B SC40W700-1000CG-2G

TYPE	Connected quantities of different current Breaker						Input Voltage	Inrush Current	Time
	current (A)	10	13	16	20	25			
	Installation wire diameter	1.5mm ²	2.5mm ²	2.5mm ²	4mm ²	4mm ²			
TYPE B		24	31	38	48	60	@230VAC	25	400
TYPE C		38	50	61	77	96			
TYPE D		61	80	98	123	154			

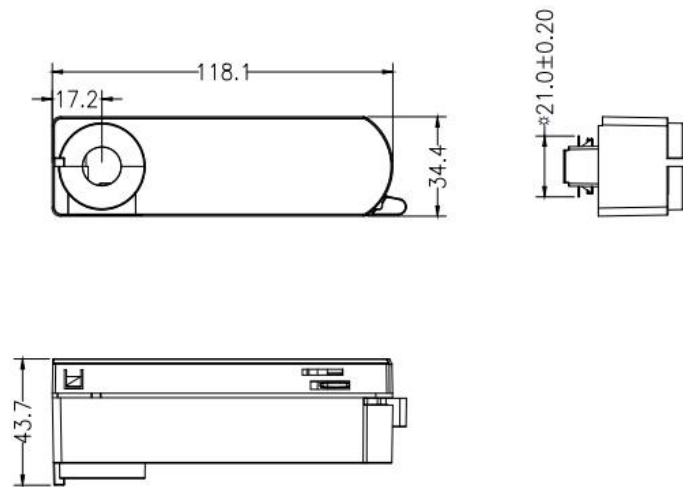
3. Label



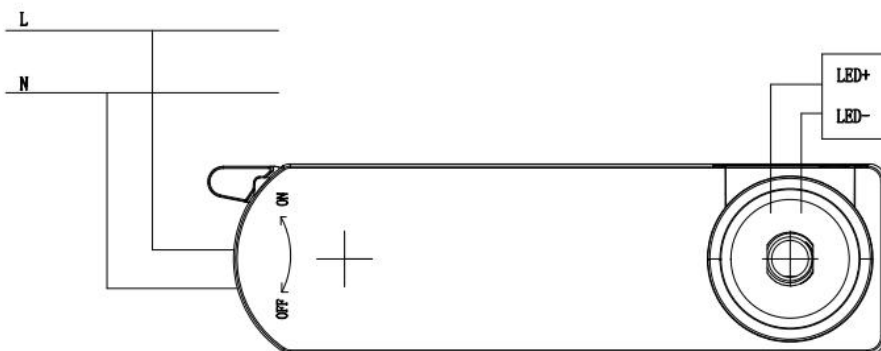
4. Lifetime curve



5. Dimension (Unit: mm)



6. Wiring Diagram



7. Packing information

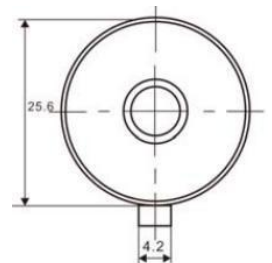
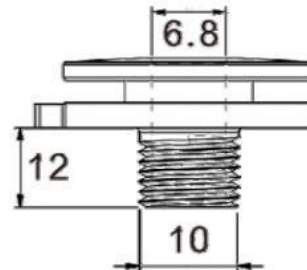
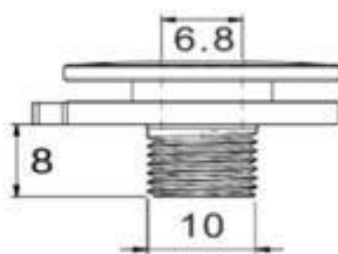
Carton L*W*H(mm)	Model	Pcs/Carton	Net weight/ Pcs(kg)	Net weight/ Carton(kg)	Gross weight / Carton(kg)
450*240*200	SC40W700-1000CG-2W	48	0.093	4.46	5.46

8. Lamp Screw Type

- Optional threaded sleeve for luminaire mounting
- Suitable for M10x1x8 threaded nut
- Additional mounting equipment, e.g. M10x1x12
- aluminium, black, white
- further on request

Ordering data

Type	Colour	Article number	Qty/ctn	Weight/pcs
M10x1x8	White	AC094306	1200	0.016
	Black	AC094307	1200	0.016
	Aluminium	AC094310	1200	0.016
M10x1x12	White	AC094308	900	0.017
	Black	AC094309	900	0.017
	Aluminium	AC094305	900	0.017



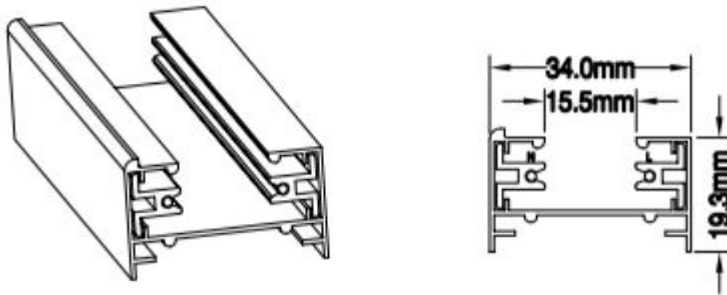
9. Suitable for following tracks

Serial number	Brand	Track model	System
1	Lan zhiliang	/	2P
2	JBD	/	2P

Remark:

- 1. The model name used is Lan zhiliang tracks .
- 2. The model name used is the JBD track .

10. Phase track light rail specification:



11. Lighting track adapter and rail system installation diagram:



The adaptor shall be given that the use is limited to the track system specified.

12. Wiring instructions

- All connections must be kept as short as possible to ensure good EMI behaviour
- Mains leads should be kept apart from LED Driver and other leads (ideally 5 – 10 cm distance)
- Advice the maximum length of output wires is 3 m
- Secondary switching is not permitted (Except for constant voltage)
- Incorrect wiring can damage LED modules.
- The wiring must be protected against short circuits to earth (sharp edged metals parts, metal cable clips, louver, etc.)

13. REVISION HISTORY

DATE	REV	Modification details
2023-04-06	V1.0	