

Constant Current & Dimmable Driver

Model: SC22W300-550CG-4W Triac
 SC22W300-550CG-4B Triac
 SC22W300-550CG-4G Triac



Model	Output Current	Input Current	Input Power	Output Power Range	PF	Efficiency (*Typical)	Output Voltage	No load Voltage
SC22W200-550CG-4W Triac	200mA	0.07A	11W	1.80-8.00W	≥0.73	≥77%	9-40V	55V
	250mA	0.08A	13W	2.25-10.00W	≥0.78	≥80%	9-40V	55V
SC22W200-550CG-4B Triac	300mA	0.09A	15.5W	2.70-12.00W	≥0.80	≥82%	9-40V	55V
	350mA	0.10A	18W	3.15-14.00W	≥0.82	≥83%	9-40V	55V
SC22W200-550CG-4G Triac	400mA	0.11A	20W	3.60-16.00W	≥0.84	≥84%	9-40V	55V
	450mA	0.13A	22W	4.05-18.00W	≥0.85	≥85%	9-40V	55V
	500mA	0.14A	24.5W	4.50-20.00W	≥0.90	≥85%	9-40V	55V
	550mA	0.15A	27W	4.95-22.00W	≥0.91	≥86%	9-40V	55V

* Test result @230V, 50Hz, Full Load.

1. Parameters

Category	Item	Technical Norm
Features	Output Type	Constant Current
	Dimming Type	Phase dimming
	Dimming Range	1%-100%
	Output Features	Isolation
	IP Grade	IP20
	Insulation Class	Class II
Input	Rated Input Voltage	220-240VAC
	Range of Input Voltage	198-264VAC or 180-280VDC
	Frequency	50/60Hz
	Input Current	≤0.15A (230VAC, full load)
	Input Power	≤27W(230VAC, full load)
	Power Factor	≥0.92(230VAC, full load)
	THD	≤15% (230VAC, full load)
	No-load Power Consumption	≤1.55W @230VAC
	Inrush Current	≤25A/50us (230VAC, full load 22W550mA)
Output	Output Voltage	9-40V
	Output Current:	200/250/300/350/400/450/500/550
	No Load Voltage	55VDC Max

	Max. Output Power:	22W
	LF Current Ripple (< 120 Hz)	$\pm 5\%$ (Imax-Imin)/(Imax+Imin) MAX
	Efficiency	$\geq 85.5\%$ (230VAC,full load)
	Current Accuracy	$\pm 5\%$
	Started Delay Time	$\leq 2S$ (230VAC,full load)
	PstLM	≤ 1
	SVM	≤ 0.4
Protection	Short Circuit Protection	Auto Recovery
	Overload Protection	Auto Recovery
	No-load Protection	Auto Recovery
	Insulation voltage	3000V 5mA 60S between P-S
	Insulation resistance	>100M ohm @ 500VDC
	Leakage current	I/P to O/P <0.7mA
Environment	Ta/Operation Temperature	-20...35°C
	Ts/Storage Temperature	-25...85°C
	Tc/Enclosure Temperature	75°C
	Humidity	10%...90%RH
	Atmosphere	86-108KPa
Construction	Connection Method	Push-in Terminal
	Installation	Independent
	SEC Wire preparation	0.5-1.5□
	Dimension	158 x 31 x 45mm (L*W*H)
Standards	Certification	CE
	Safety Standards	EN 61347-1:2015/A1:2021 EN 61347-2-13:2014/A1:2017 EN IEC 62384:2020 EN 62493:2015/A1:2022
	EMC Standards	EN IEC 55015:2019 EN IEC 55015:2019/A11:2020 EN IEC 61000-3-2:2019/A1:2021 EN 61000-3-3:2013/A2:2021 EN IEC 61547:2023
	Performance	EN62384
	Surge	L-N/2KV
	RoHS	complied to 2011/65/EU
	Others	Life Time
	Warranty	5years , F.R. < 10000ppm
	Noise	<22dB @ 20cm distance, 15dB background
Remark: 1. All Parameters, if not specified, are measured at 230VAC/50Hz and 25°C ambient temperature. 2. LED Driver is a component of the luminaires, Luminaires and wire layout will affect the EMC, please check the EMC with end products again.		

2. Trailing Edge Dimmer list approved by KGP

Manufacturer	Model	Q'ty of parallel connection
Schneider	E8432EPD4	T.B.D
Eltako	DTD55L-230V-wg	T.B.D
EHMANN	LED-Dimmer T37-08	T.B.D
LTECH	E6P-TD1	T.B.D
EUCHIPS	WALLDIM106W	T.B.D

Leading & Trailing Edge Dimmer list only on request -/ or confirmed by KGP Electronics

3. Output Current Setting

Output Current	1	2	3
200mA	-	-	-
250mA	-	-	ON
300mA	-	ON	-
350mA	-	ON	ON
400mA	ON	-	-
450mA	ON	-	ON
500mA	ON	ON	-
550mA	ON	ON	ON

4. Connected quantities of different current Breaker

TYPE	Connected quantities of different current Breaker					Input Voltage	Inrush Current	Time
	current (A)	10	13	16	20			
	Installation wire diameter	1.5mm ²	2.5mm ²	2.5mm ²	4mm ²	4mm ²		
TYPE B		24	31	38	48	60	@230VAC	25
TYPE C		38	50	61	77	96		
TYPE D		61	80	98	123	154		

5. Label

KGP
KGP Electronics GmbH
Hueckstraße 19
DE-58511 Lüdenscheid

LED Driver
SC22W200-550CG-4W Triac
For LED modules only
Constant Current Lighting track adaptors

CE

PRI:220-240VAC 50/60Hz Max.0.15A
SEC:200-550mA 9-40VDC
NO Load:55VDC Max.22W Fmax.50N↓

•tc
- ■ SEC 0.5-1.5mm
+ ■ SEC 8-9mm

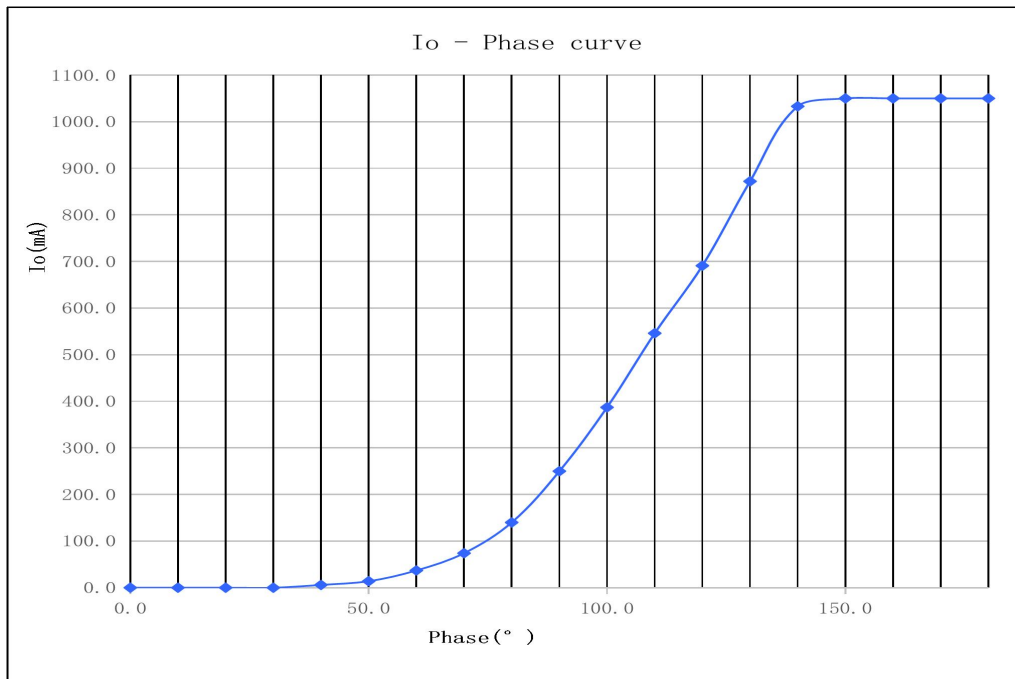
tc:75°C
ta:-20°C...35°C

ON OFF
1 2 3

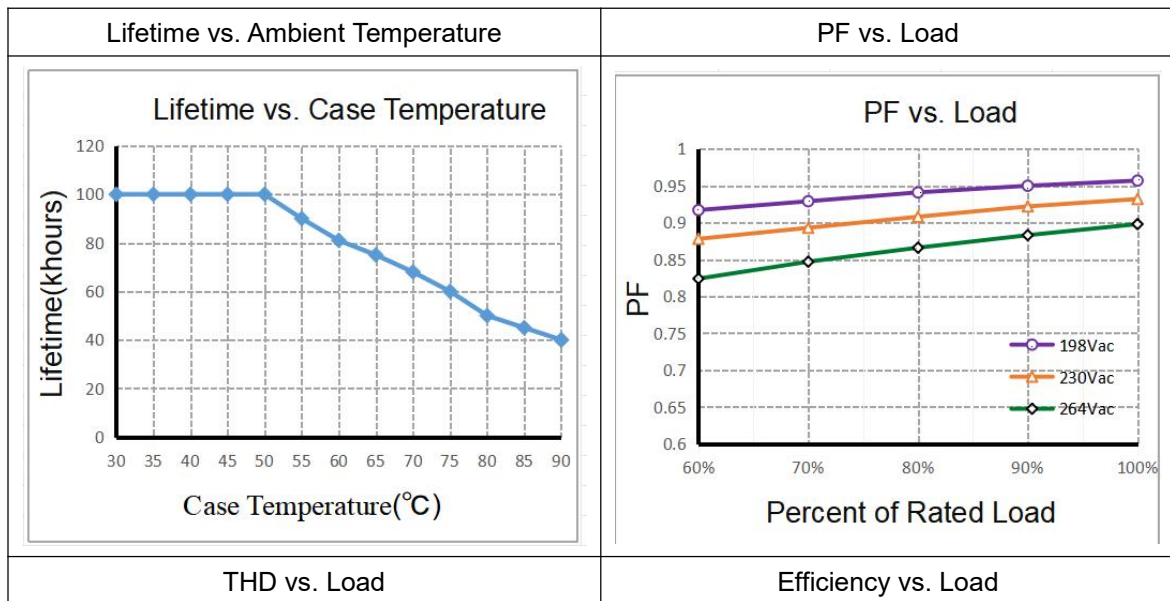
Pout [W]	Iout [mA]	λ	1	2	3	Pout [W]	Iout [mA]	λ	1	2	3
8	200	0.75C	-	-	-	16	400	0.84C	ON	-	-
10	250	0.78C	-	-	ON	18	450	0.85C	ON	-	ON
12	300	0.80C	-	ON	-	20	500	0.91C	ON	ON	-
14	350	0.82C	-	ON	ON	22	550	0.92C	ON	ON	ON

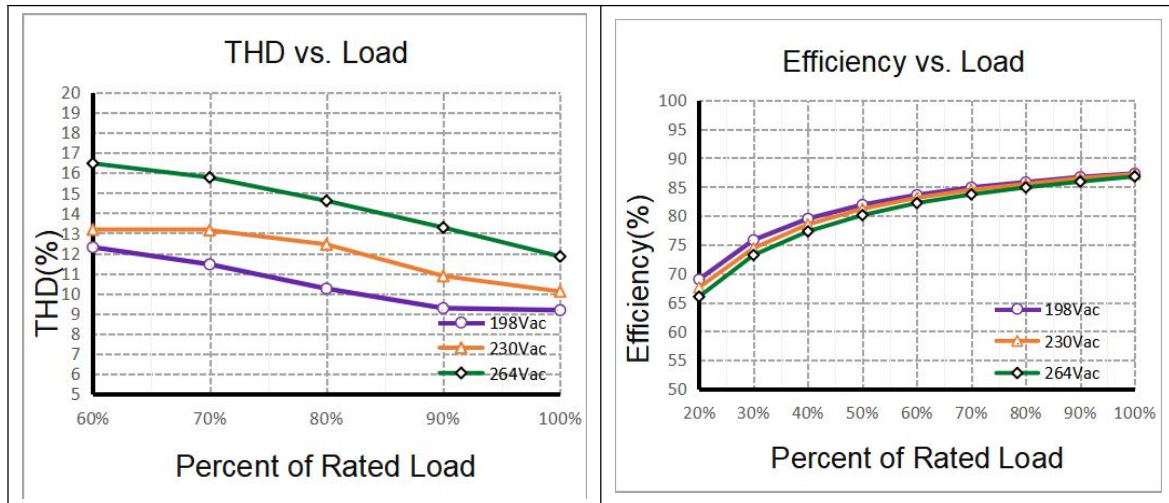
SELV

6. Dimming curve

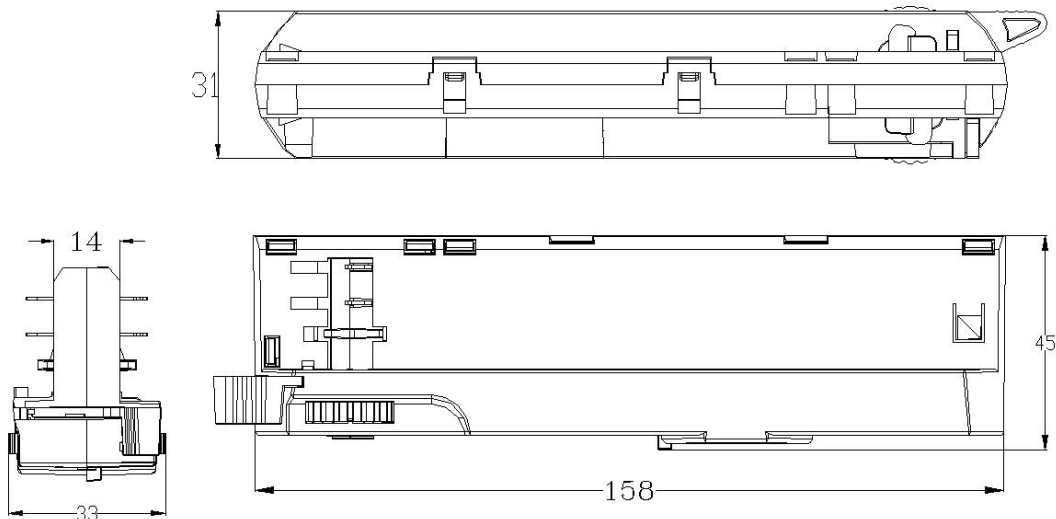


7. Electrical values





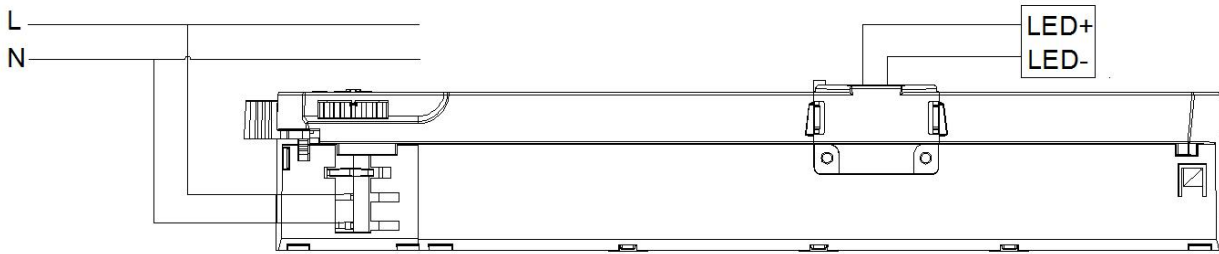
8. Dimension



9. Packing information

Packing way	Model	Colour	Carton L*W*H(mm)	Pcs/ Carton	Net weight/ Pcs(kg)	Net weight/ Carton(kg)	Gross weight/ Carton(kg)
industrial	SC42W300-1050CG-4W	White	515*274*370	150	0.125	18.75	20.07
	SC42W300-1050CG-4B	Black					
	SC42W300-1050CG-4G	Grey					

10. Wiring Diagram

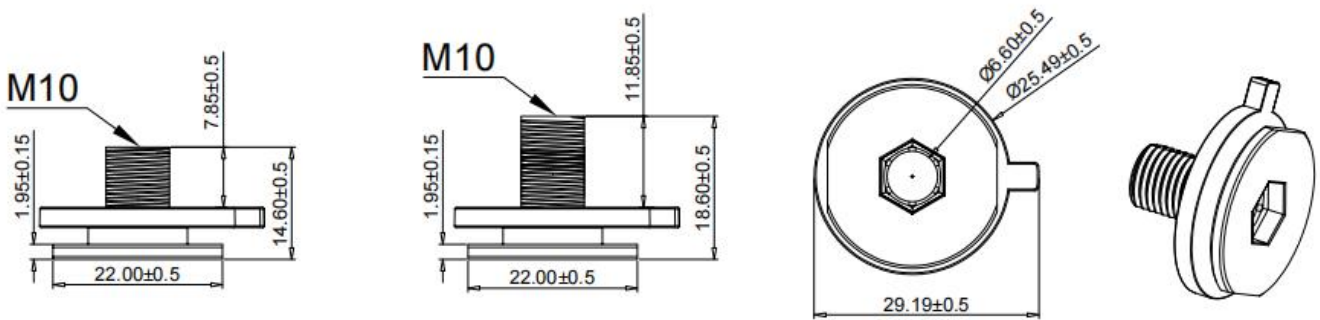


11. Lamp Screw Type

- Optional threaded sleeve for luminaire mounting
- Suitable for M10x1x8 threaded nut
- Additional mounting equipment, e.g. M10x1x12
- aluminium, black, white
- further on request

Ordering data

Type	Colour	Article number	Qty/ctn	Weight/pcs
M10x1x8	White	AL	PC	9.31
	Black	AL	PC	9.31
	Gray	AL	PC	9.31
M10x1x12	White	AL	PC	10.01
	Black	AL	PC	10.01
	Gray	AL	PC	10.01



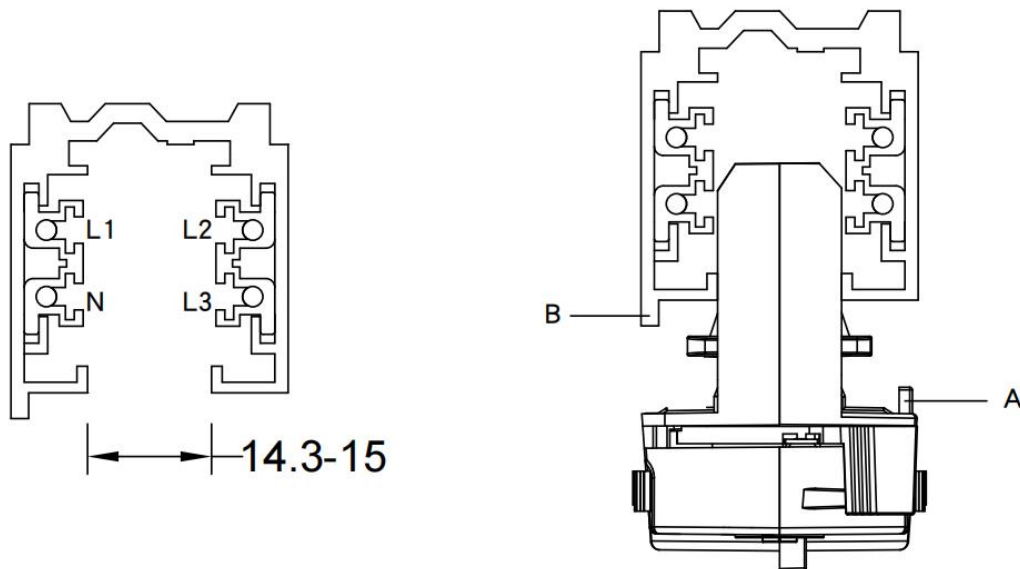
12. Suitable for following tracks

Serial number	Brand	Track model	System
1	Global	XTS11 & XTSC611	3P
2	A.A.G STUCCHI	9000-1-ST	3P
3	Eutrac	25-106	3P
4	PowerGEAR	Pro-0431L&Pro-D631R	3P
5	ERCO	1079301000	3P

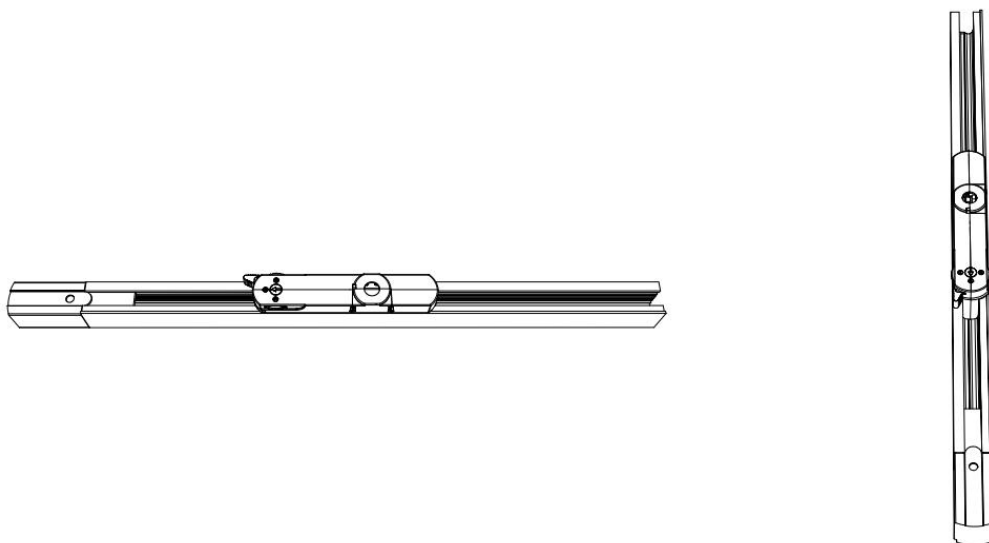
Remark:

1. The model name is XTS11 and XTSC611 tracks, and its brand is Global.
2. The model name used is the 9000-1-ST track, and its brand is A.A.G STUCCHI.
3. The model name is 25-106 tracks, and its brand is Eutrac.
4. The model name is Pro-0431L and Pro-D631R tracks, and its brand is PowerGEAR.
5. The model name is 1079301000 tracks, and its brand is ERCO.

13. Phase track light rail specification:



14. Lighting track adapter and rail system installation diagram:



The adaptor shall be given that the use is limited to the track system specified.

15. Wiring instructions

- All connections must be kept as short as possible to ensure good EMI behaviour
- Mains leads should be kept apart from LED Driver and other leads (ideally 5 – 10 cm distance)
- Advice the maximum length of output wires is 3 m
- Secondary switching is not permitted (Except for constant voltage)
- Incorrect wiring can damage LED modules.
- The wiring must be protected against short circuits to earth (sharp edged metals parts, metal cable clips, louver, etc.)
- Hot plug-in is not supported due to residual output voltage of > 0 V up to mains voltage. Danger to life.
- When connecting an LED load, restart the device to activate the LED output.

16. Replace LED module

- Mains off
- Remove LED module
- Wait for 30 seconds
- Connect LED module again
- Hot plug-in or secondary switching of LEDs is not permitted and may cause a very high current to the LEDs

17. REVISION HISTORY

DATE	REV	Modification details
2025-01-15	V1.0	Initial release.