



Model	Output Current	Input Current	Input Power	Output Power Range	PF	Efficiency	Output Voltage	No load Voltage
RC30W700A9	700mA	0.17A	34W	18.9-28W	0.92	87%	27-40V	55V
RC30W750A9	750mA	0.18A	37W	20.25-30W	0.92	87%	27-40V	55V
RC30W800A9	800mA	0.19A	39W	21.6-32W	0.95	88%	27-40V	55V
RC30W1000A9	1000mA	0.18A	37W	19-30W	0.95	90%	19-30V	55V
RC36W850A9	850mA	0.2A	41W	22.95-34W	0.95	88%	27-40V	55V
RC36W900A9	900mA	0.22A	43W	24.3-36W	0.95	89%	27-40V	55V
RC40W1000A9	1000mA	0.24A	47W	27-40W	0.95	90%	27-40V	55V
RC40W1050A9	1050mA	0.25A	50W	28.35-42W	0.95	90%	27-40V	55V

* Test result @230V, 50Hz, Full Load.

1. Parameters

Category	Item	Technical Norm
Features	Output Type	Constant Current
	IP Grade	IP44
	Insulation Class	Class II
Input	Rated Input Voltage	220-240VAC
	Range of Input Voltage	198-264VAC or 230-280VDC
	Frequency	50/60Hz
	Input Current	≤0.25A(198VAC, full load)
	Input Power	≤ 50W(230VAC, full load)
	Power Factor	≥0.95(230VAC, full load)
	THD	≤15%(230VAC, full load)
	No-load Power Consumption	≤0.5W@230VAC
Output	Current Accuracy	± 5%
	Max. Output Power	42W
	Started Delay Time	≤0.5S(230VAC, full load)
	Current Ripple(< 120 Hz)	5% (Imax-Imin) / (Imax+Imin)
	PstLM	≤1

	SVM	≤0.4
Protection	Short Circuit Protection	Auto Recovery
	Overload Protection	Auto Recovery
	No-load Protection	/
	Insulation voltage	3750V 5mA 60S between P-S
	Insulation resistance	>100M ohm @ 500VDC
	Leakage current	I/P to O/P < 250 μ A
Environment	Ta/Operation Temperature	-20....+60°C
	Ts/Storage Temperature	-40....+85°C
	Tc/Enclosure Temperature	90 °C
	Humidity	10%.... 90%RH
	Atmosphere	86-108KPa
Construction	Connection Method	Direct Lead
	Installation	Built-in
	PRI Wire preparation	0.5-1.5 [□]
	SEC Wire preparation	0.5-1.5 [□]
	Dimension	Φ57*26mm(R*H)
Standards	Certification	TUV/SAA/CCC/CE/CB
	Safety Standards	EN61347-1:2015,EN61347-2-13:2014/A1:2017,AS61347.2.13:2018,AS/NZS61347.1:2016 Inc A1
	EMC Standards	EN55015:2013/A1:2015,EN61547:2009,EN61000-3-2:2014,EN61000-3-3:2013
	Performance	EN62384
	Surge	L-N/2KV
Others	RoHS	complied to 2011/65/EU
	Life Time	50,000h @Ta=60°C
	Warranty	5years
	Noise	≤20dB @Background noise ≤15dB , Interval≥20cm
Remark 1. All Parameters, if not specified, are measured at 230VAC/50Hz and 25°C ambient temperature. 2. LED Driver is a component of the luminaires, Luminaires and wire layout will affect the EMC, please check the EMC with end products again.		

2. Connected quantities of different current Breaker

TYPE	RC30W700A9 Connected quantities of different current Breaker						Input Voltage	Inrush Current	Time
	current (A)	10	13	16	20	25			
	Installation wire diameter	1.5mm ²	2.5mm ²	2.5mm ²	4mm ²	4mm ²			
TYPE B	20	26	32	40	50	@230VAC	30	3.2us	
TYPE C	32	42	51	64	80				
TYPE D	51	67	82	102	128				

TYPE	RC30W750A9 Connected quantities of different current Breaker						Input Voltage	Inrush Current	Time
	current (A)	10	13	16	20	25			
	Installation wire diameter	1.5mm ²	2.5mm ²	2.5mm ²	4mm ²	4mm ²			
TYPE B	19	25	30	38	48	@230VAC	31.5	4.6us	
TYPE C	30	40	49	61	76				
TYPE D	49	63	78	98	122				

TYPE	RC30W800A9 Connected quantities of different current Breaker						Input Voltage	Inrush Current	Time
	current (A)	10	13	16	20	25			
	Installation wire diameter	1.5mm ²	2.5mm ²	2.5mm ²	4mm ²	4mm ²			
TYPE B	18	23	28	36	45	@230VAC	33.7	3.6us	
TYPE C	28	37	46	57	71				
TYPE D	46	59	73	91	114				

TYPE	RC30W1000A9 Connected quantities of different current Breaker						Input Voltage	Inrush Current	Time
	current (A)	10	13	16	20	25			
	Installation wire diameter	1.5mm ²	2.5mm ²	2.5mm ²	4mm ²	4mm ²			
TYPE B	18	24	29	36	45	@230VAC	33	2.8us	
TYPE C	29	38	47	58	73				
TYPE D	47	61	74	93	116				

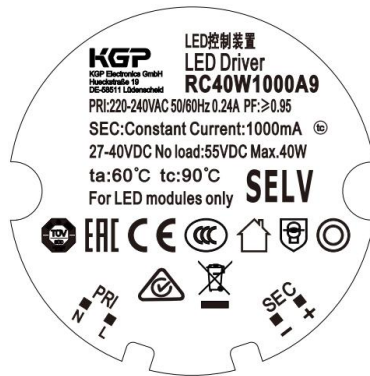
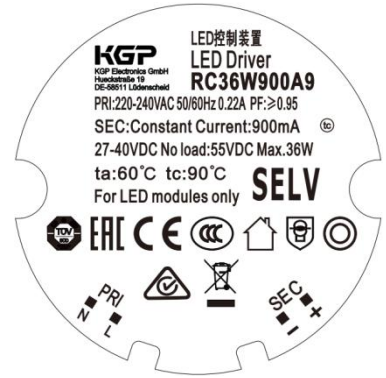
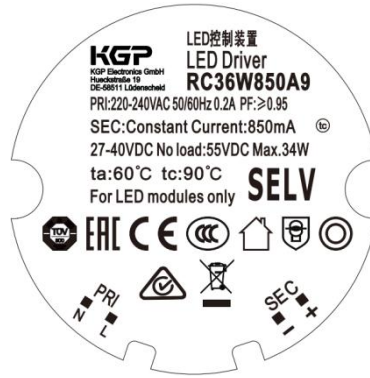
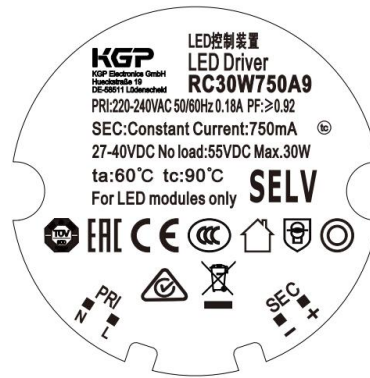
TYPE	RC36W850A9 Connected quantities of different current Breaker						Input Voltage	Inrush Current	Time
	current (A)	10	13	16	20	25			
	Installation wire diameter	1.5mm ²	2.5mm ²	2.5mm ²	4mm ²	4mm ²			
TYPE B	17	22	27	34	42	@230VAC	35.3	3.7us	
TYPE C	27	35	44	54	68				
TYPE D	44	57	70	87	109				

TYPE	RC36W900A9 Connected quantities of different current Breaker						Input Voltage	Inrush Current	Time
	current (A)	10	13	16	20	25			
	Installation wire diameter	1.5mm ²	2.5mm ²	2.5mm ²	4mm ²	4mm ²			
TYPE B	16	21	26	33	41	@230VAC	36.4	4.1us	
TYPE C	26	34	42	53	66				
TYPE D	42	55	68	84	105				

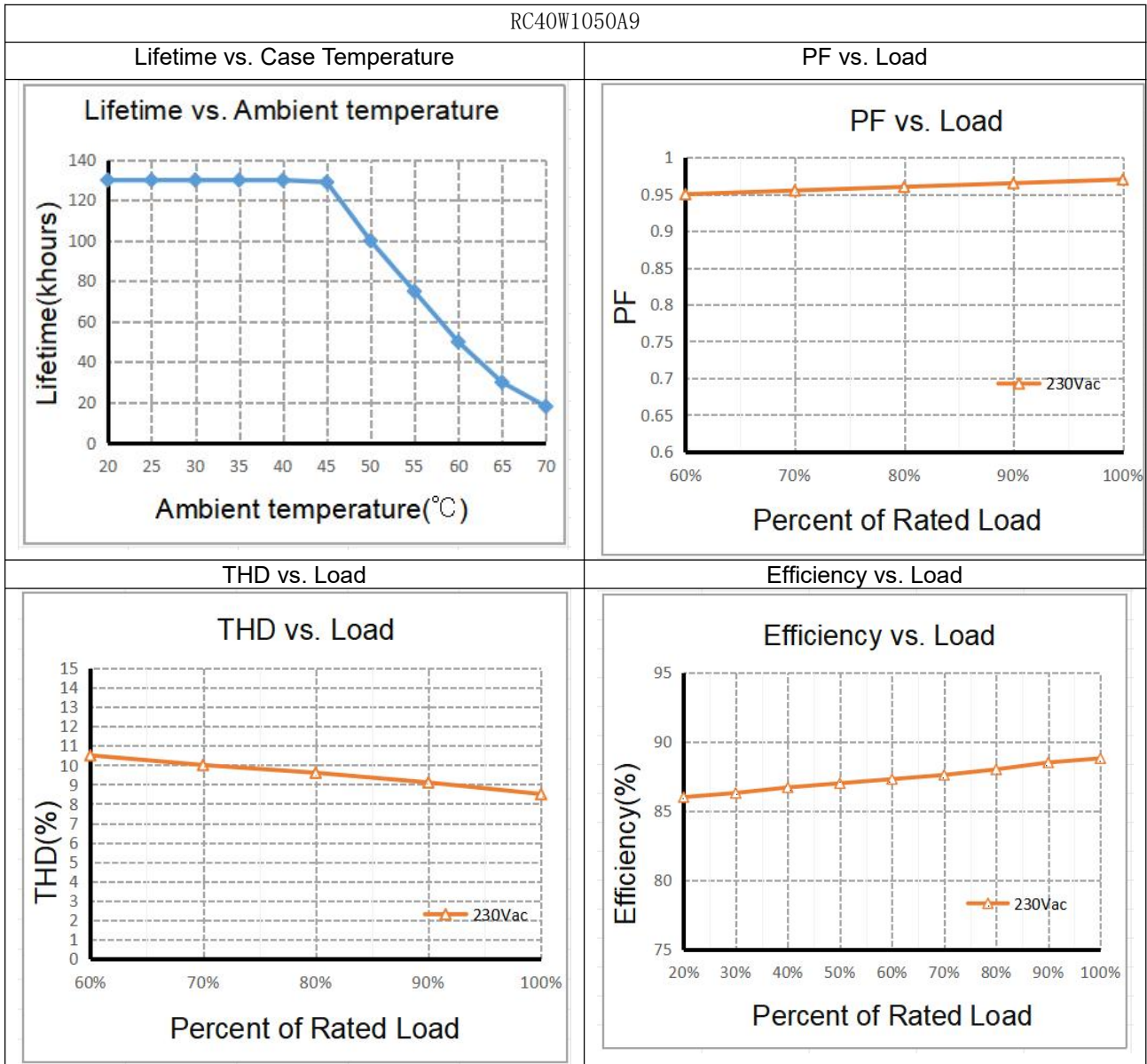
TYPE	RC40W1000A9 Connected quantities of different current Breaker						Input Voltage	Inrush Current	Time
	current (A)	10	13	16	20	25			
	Installation wire diameter	1.5mm ²	2.5mm ²	2.5mm ²	4mm ²	4mm ²			
TYPE B	16	21	26	33	41	@230VAC	36.6	3.9us	
TYPE C	26	34	42	52	66				
TYPE D	42	55	67	84	105				

TYPE	RC40W1050A9 Connected quantities of different current Breaker						Input Voltage	Inrush Current	Time
	current (A)	10	13	16	20	25			
	Installation wire diameter	1.5mm ²	2.5mm ²	2.5mm ²	4mm ²	4mm ²			
TYPE B	16	21	25	32	39	@230VAC	38	4.7us	
TYPE C	25	33	40	51	63				
TYPE D	40	53	65	81	101				

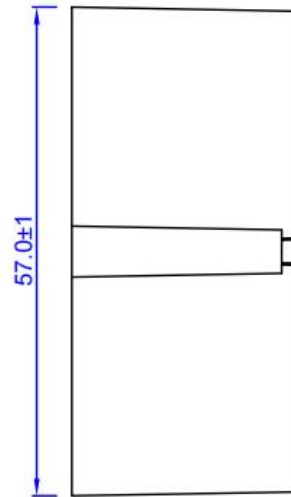
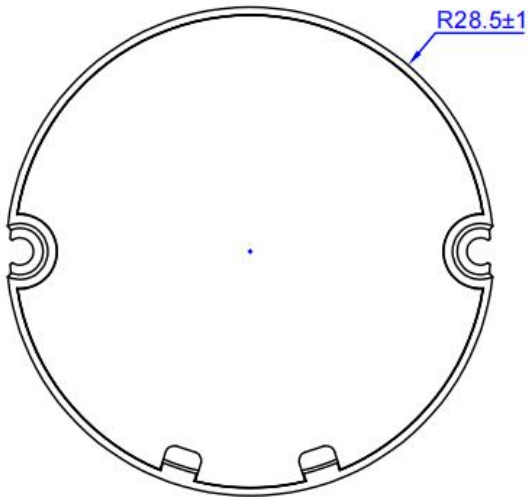
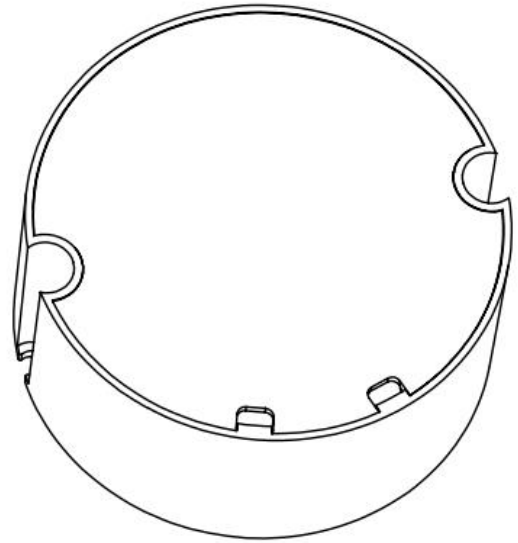
3. Label



4. Electrical values



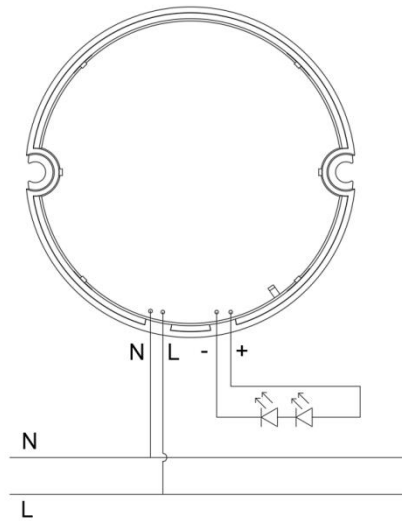
5. Dimension (Unit: mm)



6. Packing information

Carton L*W*H(mm)	Pcs/Carton	Net weight/ Pcs(kg)	Net weight/ Carton(kg)	Gross weight / Carton(kg)
447*240*200	100	0.112	11.2	14.2

7. Wiring Diagram



8. Wiring instructions

- All connections must be kept as short as possible to ensure good EMI behaviour
- Mains leads should be kept apart from LED Driver and other leads (ideally 5 – 10 cm distance)
- Advice the maximum length of output wires is 3 m
- Secondary switching is not permitted (Except for constant voltage)
- Incorrect wiring can damage LED modules.
- The wiring must be protected against short circuits to earth (sharp edged metals parts, metal cable clips, louver, etc.)

9. REVISION HISTORY

DATE	VER	REMARK
2024-6-18	V1.0	Initial release.