



**Constant Current Driver**

**Model:RC20WYYY**



Model	Output Current	Input Current	Input Power	Output Power Range	PF	Efficiency	Output Voltage	No load Voltage
RC12W300	300mA	0.08A	16W	8.1-12.6W	0.9	84%	27-42V	55V
RC15W300	300mA	0.1A	19W	10.8-15W	0.9	84%	36-50V	65V
RC15W350	350mA	0.1A	19W	10.5-14.7W	0.9	84%	30-42V	55V
RC15W400	400mA	0.1A	20W	10.8-16W	0.9	84%	27-40V	55V
RC15W450	450mA	0.1A	17W	8.55-13.5W	0.9	84%	19-30V	45V
RC15W500	500mA	0.1A	19W	9.5-15W	0.9	84%	19-30V	45V
RC15W550	550mA	0.1A	20W	10.45-15.95W	0.9	84%	19-29V	45V
RC15W600	600mA	0.1A	16W	7.8-12.6W	0.9	84%	13-21V	35V
RC15W650	650mA	0.1A	17W	8.45-13.65W	0.9	84%	13-21V	35V
RC15W700	700mA	0.1A	18W	9.1-14.7W	0.9	84%	13-21V	35V
RC20W350	350mA	0.12A	22W	12.6-17.5W	0.92	85%	36-50V	65V
RC20W400	400mA	0.12A	25W	14.4-20W	0.92	85%	36-50V	65V
RC20W450	450mA	0.12A	23W	12.15-18.9W	0.92	85%	27-42V	55V
RC20W500	500mA	0.12A	25W	13.5-20W	0.92	85%	27-40V	55V
RC20W650	650mA	0.12A	24W	12.35-19.5W	0.92	85%	19-30V	45V
RC20W700	700mA	0.12A	24W	13.3-19.6W	0.92	85%	19-28V	40V
RC20W800	800mA	0.12A	21W	10.4-16.8W	0.92	85%	13-21V	35V
RC20W850	850mA	0.12A	22W	11.05-17.85W	0.92	85%	13-21V	35V
RC20W900	900mA	0.12A	24W	11.7-18.9W	0.92	85%	13-21V	35V

\* Test result @230V, 50Hz, Full Load.

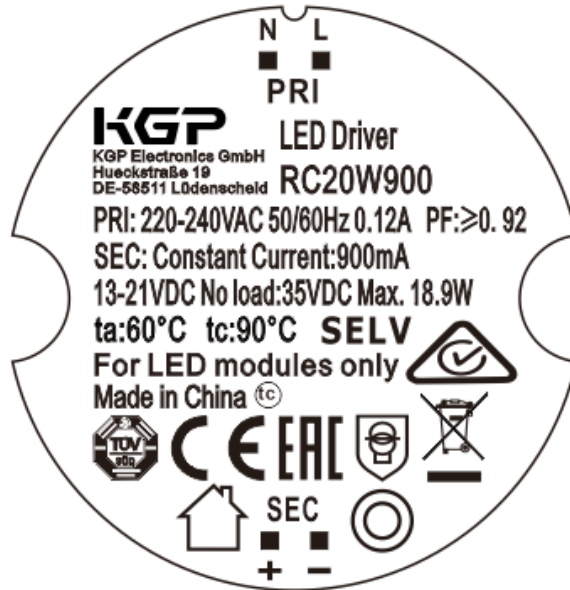
### 1. Parameters

category	Item	Technical Norm
Features	Output Type	Constant Current
	IP Grade	IP20
	Insulation Class	Class II
Input	Rated Input Voltage	220-240VAC
	Range of Input Voltage	198-264VAC or 230-280VDC
	Frequency	50/60Hz

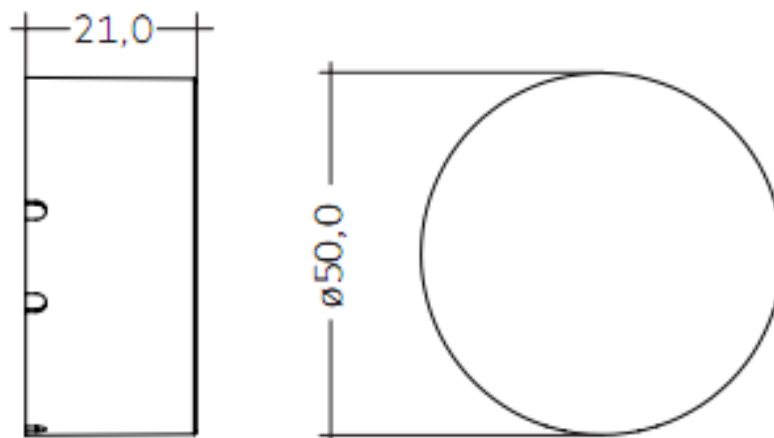
	Input Current	$\leq 0.12A$
	Input Power	$\leq 24.5W$
	Power Factor	$\geq 0.92$ (230VAC, full load)
	THD	$\leq 15\%$ (230VAC, full load)
	No-load Power Consumption	$\leq 0.5W$ @230VAC
	Inrush Current	$\leq 15A/350\mu s$ (230VAC, Full-load)
	Connected quantity of 16A Breaker	32pcs/type B ; 53pcs/type C @ 230Vac
Output	Current Accuracy	$\pm 5\%$
	Max. Output Power	20W
	Started Delay Time	$\leq 0.5S$ (230VAC, full load)
	Current Ripple(< 120 Hz)	$\pm 5\%$ (Imax-Imin) / (Imax+Imin)
	PstLM	$\leq 1$
	SVM	$\leq 0.4$
Protection	Short Circuit Protection	Auto Recovery
	Overload Protection	Auto Recovery
	No-load Protection	Auto Recovery
	Insulation voltage	I/P to O/P , 3KVac/1min
	Insulation resistance	$> 100M$ ohm @ 500VDC
	Leakage current	I/P to O/P $< 250 \mu A$
Environment	Ta/Operation Temperature	-20....+60°C
	Ts/Storage Temperature	-40....+85°C
	Tc/Enclosure Temperature	90 °C
	Humidity	10%....90%RH
	Atmosphere	86-108KPa
Construction	Connection Method	Direct Lead
	Installation	Build-in
	PRI Wire preparation	0.5-1.5 <sup>□</sup>
	SEC Wire preparation	0.5-1.5 <sup>□</sup>
	Dimension	$\Phi 50 \times 21mm$ (R*H)
Standards	Certification	TUV、CE、SAA、EAC
	Safety Standards	EN61347-1:2015,EN61347-2-13:2014/A1:2017, AS 61347.2.13:2018,AS/NZS 61347.1:2016 Inc A1
	EMC Standards	EN IEC 55015:2019EN, IEC 55015:2019/A11:2019 ,EN IEC 61000-3-2:2019,EN 61000-3-3:2013/A1: 2019,EN61547:200
	Performance	EN62384
	Surge	L-N/2KV
Others	RoHS	complied to 2011/65/EU
	Life Time	50,000h @Ta / Tc

	Warranty	5years , F.R. < 10000ppm
<p>Remark</p> <ol style="list-style-type: none"> <li>All Parameters, if not specified, are measured at 230VAC/50Hz and 25°C ambient temperature.</li> <li>LED Driver is a component of the luminaires, Luminaires and wire layout will affect the EMC, please check the EMC with end products again.</li> </ol>		

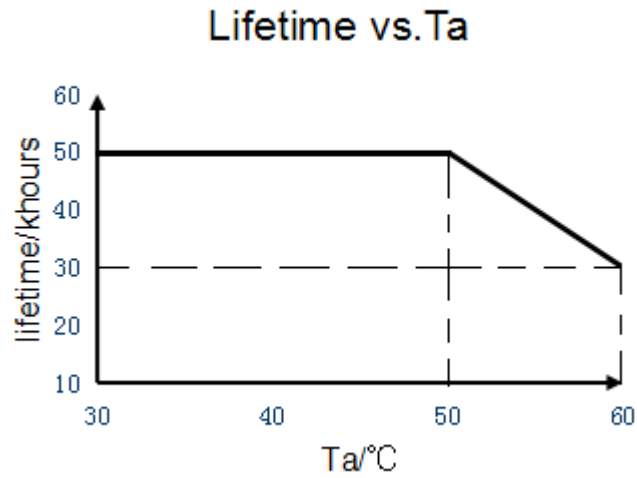
### 2. Label (For example)



### 3. Dimension (Unit: mm)



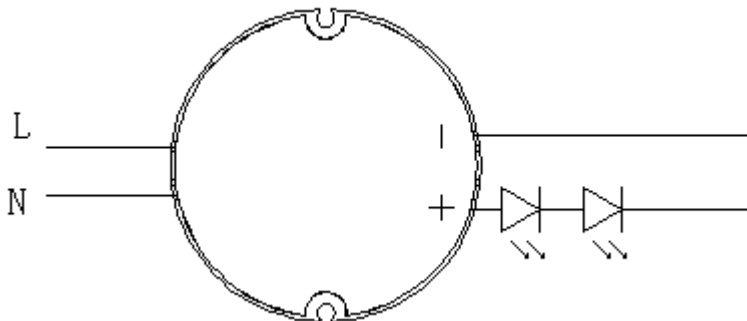
## 4. Lifetime VS. Ta



## 5. Packing information

Carton L*W*H(mm)	Pcs/Carton	Net weight/ Pcs(kg)	Net weight/ Carton(kg)	Gross weight / Carton(kg)
450*240*200	250	0.078	19.5	20.25

## 6. Wiring Diagram



## 7. Wiring instructions

- All connections must be kept as short as possible to ensure good EMI behaviour
- Mains leads should be kept apart from LED Driver and other leads (ideally 5 – 10 cm distance)
- Advice the maximum length of output wires is 3 m
- Secondary switching is not permitted (Except for constant voltage)
- Incorrect wiring can damage LED modules.



**RCXXWYYY**

- The wiring must be protected against short circuits to earth (sharp edged metals parts, metal cable clips, louver, etc.)