



Model	Output Current	Input Current	Input Power	Output Power Range	PF	Efficiency	Output Voltage	No load Voltage
RC10W250G1 Triac	250mA	≤0.08A	≤13.5W	6.75-10W	0.9	80%	27-40V	50V
RC10W500G1 Triac	500mA	≤0.08A	≤14W	6.5-10W	0.9	80%	13-20V	35V
RC12W300G1 Triac	300mA	≤0.11A	≤15.5W	9-12W	0.9	80%	30-40V	50V
RC15W350G1 Triac	350mA	≤0.12A	≤18W	9.45-14W	0.9	80%	27-40V	50V
RC15W400G1 Triac	400mA	≤0.12A	≤19W	10.8-15.6W	0.9	79%	27-39V	50V
RC15W700G1 Triac	700mA	≤0.12A	≤19W	9.1-14.7W	0.9	78%	13-21V	35V

\* Test result @230V, 50Hz, Full Load.

### 1. Parameters

Category	Item	Technical Norm
Features	Output Type	Constant Current
	Dimming Type	Phase dimming
	Dimming Range	5%-100%
	IP Grade	IP44
	Insulation Class	Class II
Input	Rated Input Voltage	220-240VAC_stable
	Range of Input Voltage	198-264VAC_stable or 180-280VDC_stable
	Frequency	0/50/60Hz
	Input Current	≤0.12A (230VAC,full load)
	Input Power	≤19W (230VAC,full load)
	Power Factor	≥0.9 (230VAC,full load)
	THD	≤20% (230VAC,full load)
	No-load Power Consumption	≤0.5W @230VAC
Inrush Current	≤8.5A/40us (230VAC, full load)	
Output	Output Voltage	27-40VDC@250mA , 13-20VDC@500mA
		13-20VDC@500mA , 30-40VDC@300mA
		27-40VDC@350mA , 27-39VDC@400mA
		13-21VDC@700mA
	Max. Output Power	15.6W
Efficiency	≥80% (230VAC,full load)	
Current Accuracy	±6%@250mA, 500mA, 700mA ±8%@300mA, 350mA, 400mA	
Started Delay Time	≤1S (230VAC,full load)	

	Current Ripple(< 120 Hz)	$\pm 5\% (I_{max}-I_{min}) / (I_{max}+I_{min})$	
	PstLM	$\leq 1$	
	SVM	$\leq 0.4$	
Protection	Short Circuit Protection	Auto Recovery	
	Overload Protection	Auto Recovery	
	No-load Protection	Auto Recovery	
	Insulation voltage	I/P to O/P , 3.75KVac/5mA/1min	
	Insulation resistance	>100M ohm @ 500VDC	
	Leakage current	I/P to O/P < 0.7mA	
Environment	Ta/Operation Temperature	-20....+60°C	
	Ts/Storage Temperature	-25....+85°C	
	Tc/Enclosure Temperature	RC10W250G1 Triac:	85 °C
		RC10W500G1 Triac:	85 °C
		RC12W300G1 Triac:	85 °C
		RC15W350G1 Triac:	90 °C
		RC15W400G1 Triac:	85 °C
		RC15W700G1 Triac:	90 °C
Humidity	10%....90%RH		
Atmosphere	86-108KPa		
Construction	Connection Method	Direct Lead	
	Installation	Build-in	
	PRI Wire preparation	0.5-1.5 <sup>□</sup>	
	SEC Wire preparation	0.3-0.5 <sup>□</sup>	
	Dimension	Φ51*22.5mm (R*H)	
Standards	Certification	CE EAC	
	Safety Standards	EN 61347-1:2015/A1:2021	
		EN 61347-2-13:2014/A1:2017	
		EN IEC 62384:2020	
	EMC Standards	EN IEC 55015:2019	
		EN IEC 55015:2019/A11:2020	
EN IEC 61000-3-2:2019/A1:2021			
EN IEC 61000-3-3:2013/A2:2021			
EN IEC 61547:2023			
Performance	EN62384		
Surge	L-N/ 2KV		
Others	RoHS	complied to 2011/65/EU	
	Life Time	50000h @ Ta/Tc	
	Warranty	5years , F.R. < 10000ppm	
	Noise	$\leq 24\text{dB}$ @Background noise $\leq 18\text{dB}$ , Interval $\geq 15\text{cm}$	

**Remark:**

- All Parameters, if not specified, are measured at 230VAC/50Hz and 25°C ambient temperature.
- LED Driver is a component of the luminaires. Luminaires and wire layout will affect the EMC, please check the

- EMC with end products again.
- 3.It is recommended that the control mode is back dimming for better effect.
- 4.Do not install upside down.

## 2. Trailing Edge Dimmer list approved by KGP

Manufacturer	Model	Q'ty of parallel connection
Yikai	EU-200P	T.B.D
Berker	286710	T.B.D
Schneider	SBD200LED	T.B.D
Schneider	SBD315RC	T.B.D
Eltako	DTD55L-230V-wg	T.B.D
ETMAN	ETM321PV2	T.B.D
EUCHIPS	Walldin 106	T.B.D
JISIM	JP1101	T.B.D

**Leading Edge Dimmer list only on request -/ or confirmed by KGP Electron**

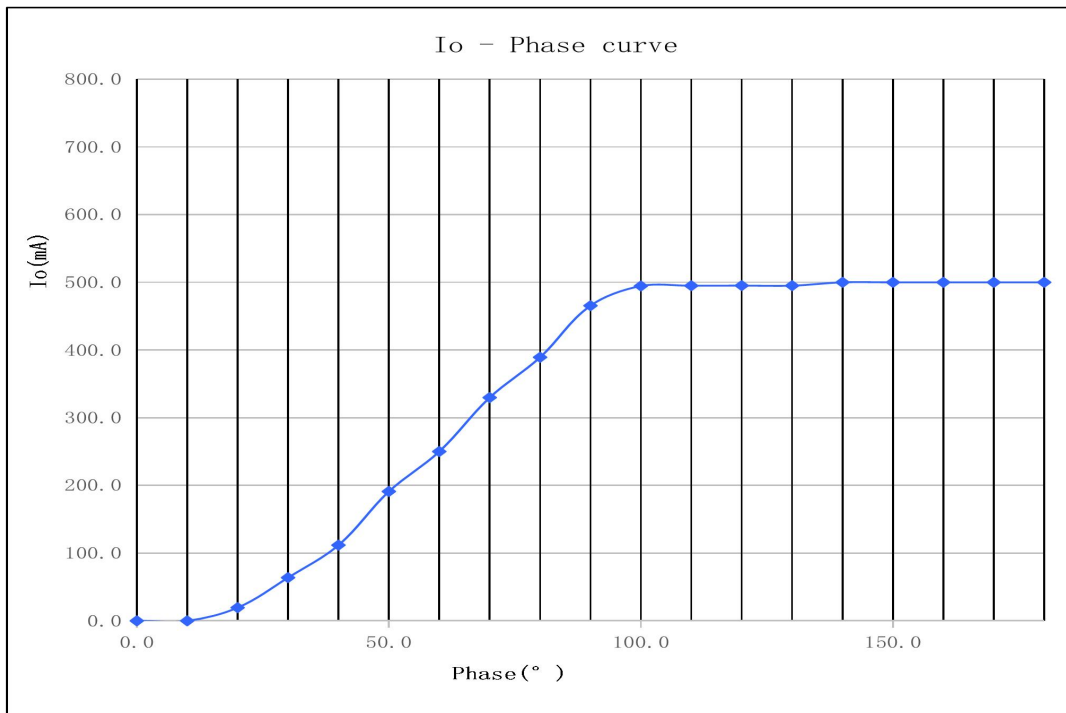
## 3. Connected quantities of different current Breaker

TYPE	Connected quantities of different current Breaker						Input Voltage (V)	Inrush Current(A)	Time (µs)
	current (A)	10	13	16	20	25			
	Installation wire diameter	1.5mm <sup>2</sup>	2.5mm <sup>2</sup>	2.5mm <sup>2</sup>	4mm <sup>2</sup>	4mm <sup>2</sup>			
TYPE B	71	92	113	141	176	@230VAC	8.5	40us	
TYPE C	113	147	181	226	282				
TYPE D	181	235	289	361	452				

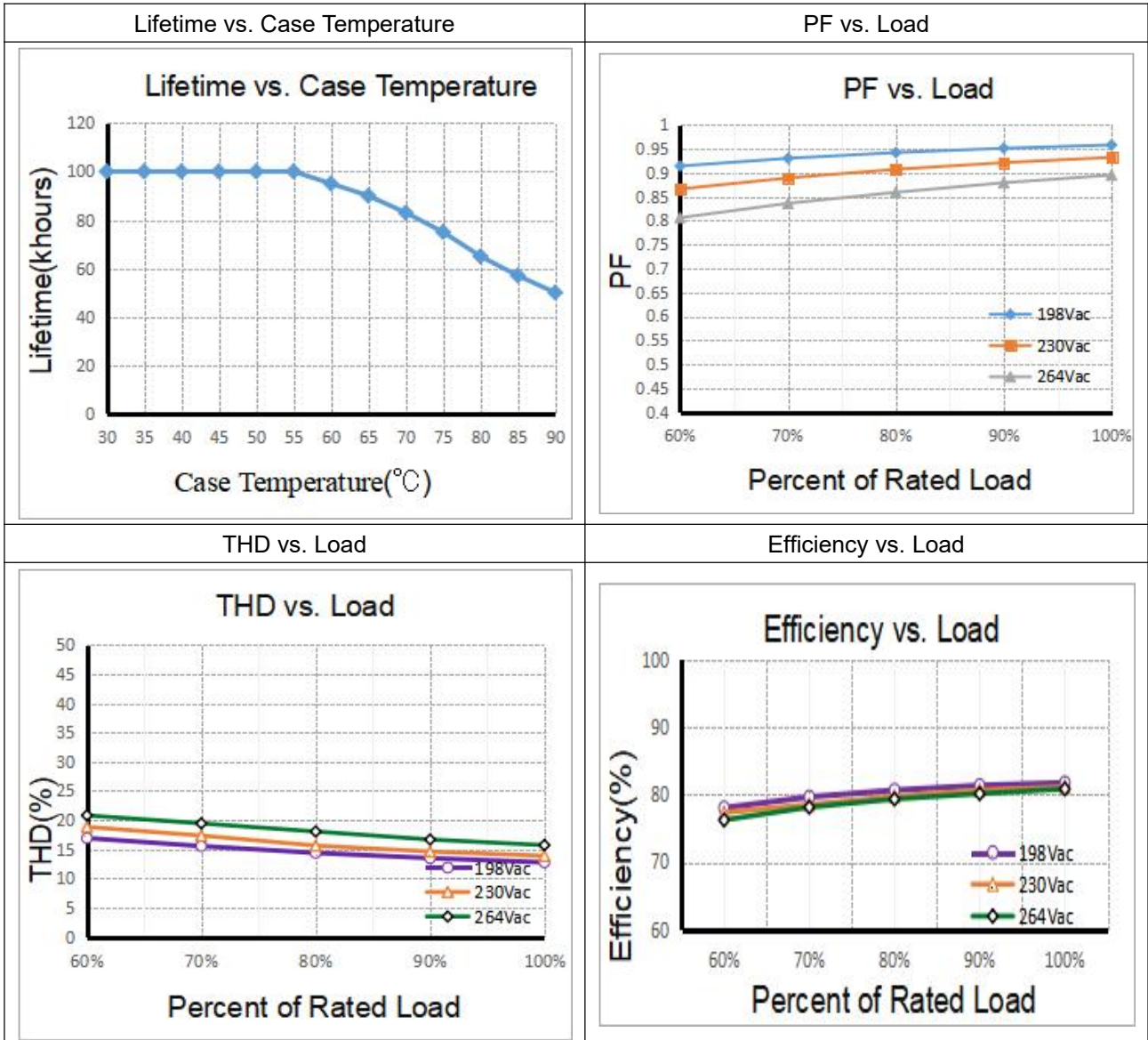
### 4. Label



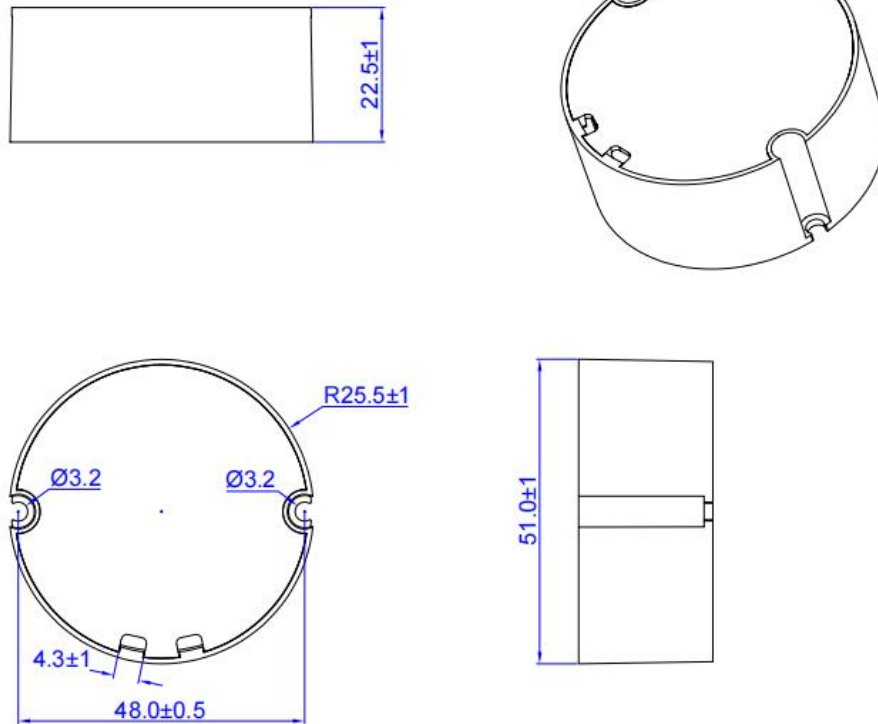
### 5. Dimming curve



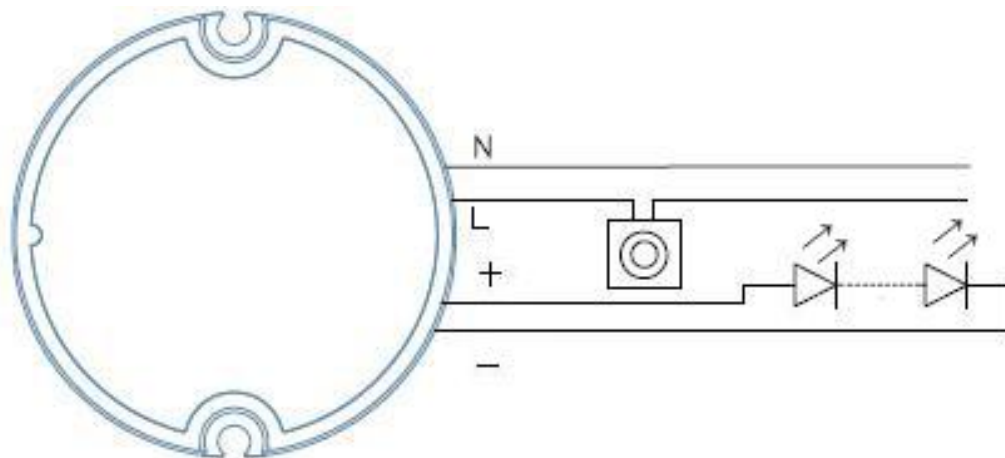
### 6. Electrical values



### 7. Dimension (Unit: mm)



### 8. Wiring Diagram



#### Wiring type and cross section

Input: Brown-blue wire,  $175\text{mm} \pm 5\text{mm}$ ,  $0.5\text{mm}^2$

Output: Red-black wire,  $175\text{mm} \pm 5\text{mm}$ ,  $0.3\text{mm}^2$



## RCXXWXXXG1 Triac

### 9. Packing information

Packing way	Model	Carton L*W*H(mm)	Pcs/ Carton	Net weight/ Pcs(kg)	Net weight/ Carton(kg)	Gross weight/ Carton(kg)
Industrial	RCXXWXXXG1 Triac	410*270*160	150	0.081	12.15	12.7

### 10. Wiring instructions

- All connections must be kept as short as possible to ensure good EMI behaviour
- Mains leads should be kept apart from LED Driver and other leads (ideally 5 – 10 cm distance)
- Advice the maximum length of output wires is 0.5 m
- Secondary switching is not permitted
- Incorrect wiring can damage LED modules.
- The wiring must be protected against short circuits to earth (sharp edged metals parts, metal cable clips, louver, etc.)
- Hot plug-in is not supported due to residual output voltage of > 0 V up to mains voltage. Danger to life.
- When connecting an LED load, restart the device to activate the LED output.

### 11. Replace LED module

- Mains off
- Remove LED module
- Wait for 30 seconds
- Connect LED module again
- Hot plug-in or secondary switching of LEDs is not permitted and may cause a very high current to the LEDs

### 12. REVISION HISTORY

DATE	REV.	REMARK
2025-11-12	V1.0	Initial release.