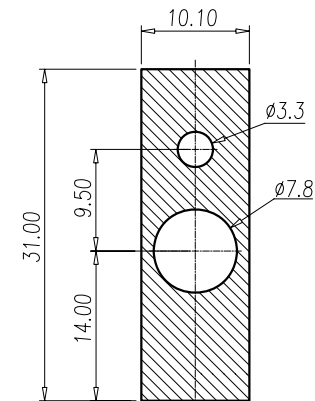


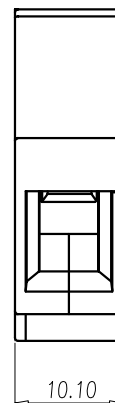
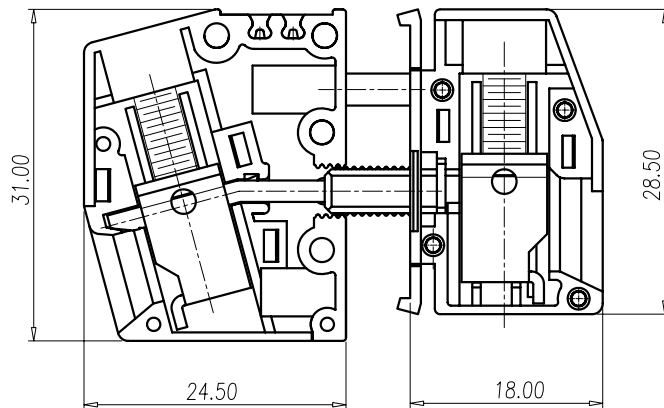
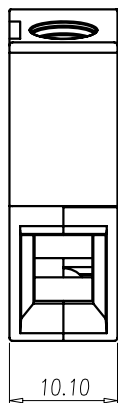
NOTES 1:

UL Standard :

1. Rating: 300V 65A
2. Insulation Withstands Voltage: AC 6000V at 1 minute
3. Using Temperature Range: -40°C~+105°C
4. Suitable Electric Wire: AWG 24~6



PANEL LAYOUT



IEC Standard:

1. Rating: 320V (2.5~4.0mm 安装板), 76A
500V (1.0~2.5mm 安装板), 76A
500V (1.0~4.0mm 塑胶安装板), 76A
2. Rate Impulse Voltage: 6000V
3. Insulation Resistance: 500MΩ or more at DC500V
4. Material Group : I
5. Pollution Degree : 3
6. Overvoltage Category: III
7. Using Temperature Range: -40°C~+120°C
8. Suitable Electric Wire: 0.5~16mm²

NOTES 2:

1. RoHS compliance
2. Strip Length: 10mm
3. Screw Torque Value: 1.7N • m

Normal Geometric Tolerancing				
—	//	≡	⊥	
0 to 100	0.2	0.3	0 to 10	0.2
over 100 to 150	0.3		over 10	0.3
over 150	0.5			
Total Pitch Tolerances		Normal Dimension Tolerances		
0~30	±0.20	0~30	±0.25	
over 30~53	±0.25	over 30~53	±0.30	
over 53~70	±0.30	over 53~70	±0.35	
over 70~90	±0.35	over 70~90	±0.44	
over 90~115	±0.44	over 90~115	±0.55	
over 115~150	±0.55	over 115~150	±0.70	
over 150~200	±0.70	over 150~200	±0.85	
over 200~250	±0.85	over 200~250	±1.00	
over 250~320	±1.00	over 250~320	±1.20	

2	PPACN-10B		
1	PPACN-10A		
ITEM	NAME OF PART	MATERIAL	NOTES

DWG.	ZTM	DATE	15.03.06	UNITS	MM	SHEET/OF	1 / 1
CHK.		DATE		SCALE	2:1 (:)		
APP.		DATE		NAME		PPACN-10	
				DINKLE ENTERPRISE CO., LTD		DWG NO. SP-03-PPACN100	

3			
REV.	CONTENT	CHK.	DATE