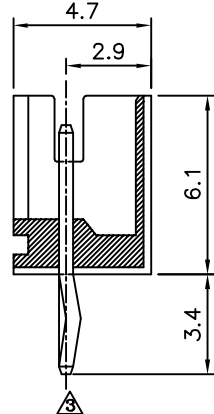
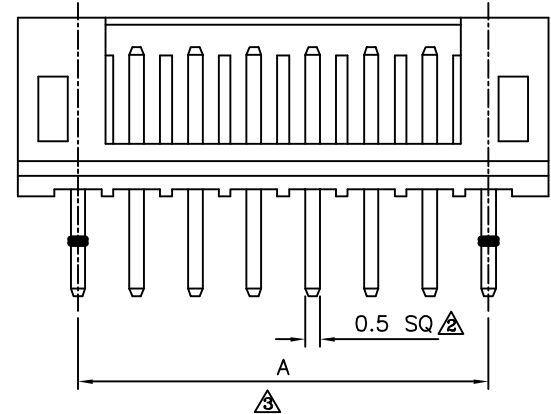
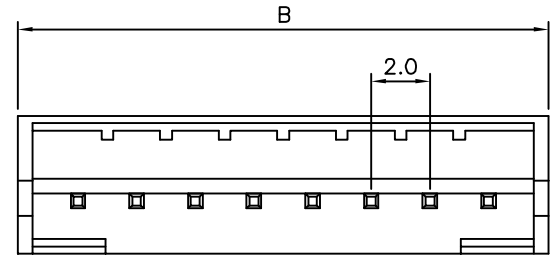


△ Recommended PCB Layout  
Thickness:0.8~1.6mm

△△ SPECIFICATION  
Current Rating:2A  
Voltage Rating:100V AC  
Contact Resistance:20 Milliohms Max.  
Dielectric Withstanding Voltage:800V AC/Minute  
Insulation Resistance:1000 Megaohms Min.  
Temperature Range:-25°C~+85°C  
Insulator:PA66(UL94V-0),Nature  
Contact:Brass,Tin Plated  
RoHS Compliant



△ PH XX D - H  
(1) (2) (3) (4)  
(1) PH:2.0mm PH Series  
(2) XX:No. Of Position  
(3) D:Male DIP Straight  
(4) H:RoHS Compliant

Pin	A	B
2	2.0	6.1
3	4.0	8.1
4	6.0	10.1
5	8.0	12.1
6	10.0	14.1
7	12.0	16.1
8	14.0	18.1
9	16.0	20.1
10	18.0	22.1
11	20.0	24.1
12	22.0	26.1
13	24.0	28.1
14	26.0	30.1
15	28.0	32.1
16	30.0	34.1

**AUK** A MEMBER OF AUK GROUP  
**太聯事業股份有限公司**  
**AUK CONTRACTORS CO., LTD.**

CATEGORY		APPROVED BY		UNLESS OTHERWISE SPECIFIED TOLERANCES ARE .X ±0.3 .XX ±0.2 ANG.
PART No. PHXXD-H		EMILY		
DRAWING No. PHXXD-H		CHECKED BY HZF		
SCALE NONE		DRAWING BY CYP		
REV.	A3	UNIT mm		

NO.	REV.	REVISIONS	CHK	DATE
△ A3		Modify Data	HZF	02/05/2015
△ A2		Modify Data	HZF	03/23/2010
△ A1		Modify Data	BECKY	2005/02/17
△ A0		NEW RELEASE		