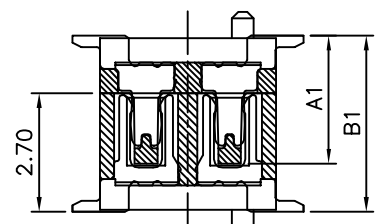
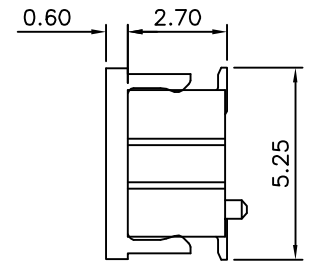
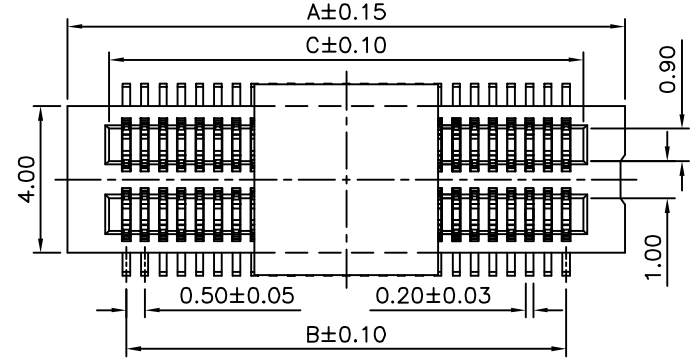
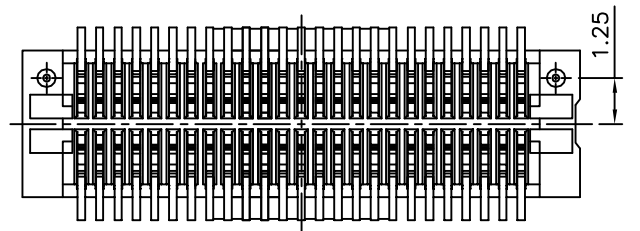
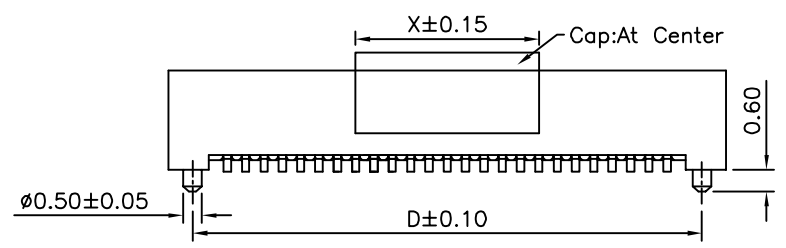


Recommended P.C.B. Layout



Mating Draw (Ref.)



**SPECIFICATION**

- 1.General Characteristics:  
0.5mm Board To Board Double Slot Type  
Male XXP SMT 180° With Post Stacking  
Height=4.0mm With Cap
- 2.Material&Finish  
Housing: PA46(UL94V-0),Nature  
Contact: Phosphor Bronze,Gold Plated Over Nickel
- 3.Electrical Characteristics:  
Current Rating: 0.5A AC/DC  
Voltage Rating: 50V AC/DC  
Withstanding Voltage: 100V AC For One Minute  
Contact Resistance: 30 Milliohms Max.  
Insulation Resistance: 100 Megaohms Min. At 100V DC
- 4.Environmental Characteristics:  
Operation Temperature: -20°C~+105°C
- 5.RoHS Compliant

Pin	X
10~48	5.00
50~120	12.0

Pin	A	B	C	D
10	5.20	2.00	2.96	3.90
12	5.70	2.50	3.46	4.40
14	6.20	3.00	3.96	4.90
16	6.70	3.50	4.46	5.40
18	7.20	4.00	4.96	5.90
20	7.70	4.50	5.46	6.40
22	8.20	5.00	5.96	6.90
24	8.70	5.50	6.46	7.40
26	9.20	6.00	6.96	7.90
28	9.70	6.50	7.46	8.40
30	10.20	7.00	7.96	8.90
32	10.70	7.50	8.46	9.40
34	11.20	8.00	8.96	9.90
36	11.70	8.50	9.46	10.40
38	12.20	9.00	9.96	10.90
40	12.70	9.50	10.46	11.40
42	13.20	10.00	10.96	11.90
44	13.70	10.50	11.46	12.40
46	14.20	11.00	11.96	12.90
48	14.70	11.50	12.46	13.40
50	15.20	12.00	12.96	13.90
60	17.70	14.50	15.46	16.40
70	20.20	17.00	17.96	18.90
80	22.70	19.50	20.46	21.40
90	25.20	22.00	22.96	23.90
100	27.70	24.50	25.46	26.40
120	32.70	29.50	30.46	31.40

NPVB XXX P27R - H  
(1) (2) (3) (4)

- (1) NPVB: 0.5mm Board To Board Double Slot Type SMT Straight With Post
- (2) XXX: No. Of Position
- (3) P27R: 4.0mm Stacking Height Male
- (4) H: RoHS Compliant

Part No.(Socket)	Part No.(Plug)	Dim. A1	Dim. B1
NPVBXXXS12R-H	NPVBXXXP27R-H	2.90	4.00



CATEGORY		APPROVED BY		UNLESS OTHERWISE SPECIFIED TOLERANCES ARE .X ±0.2 .XX ±0.15 ANG.
PART No. NPVBXXXP27R-H		EMILY		
DRAWING No. NPVBXXXP27R-H		CHECKED BY HZF		
SCALE NONE		DRAWING BY SONG		
REV.	B0	UNIT mm	BO	NO.REV.

NO.	REV.	REVISIONS	CHK	DATE
				05/01/2014