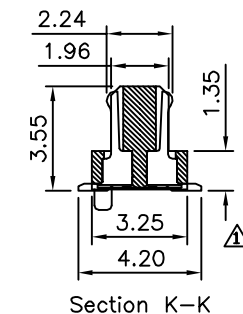
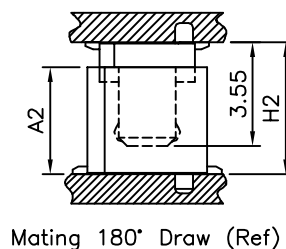
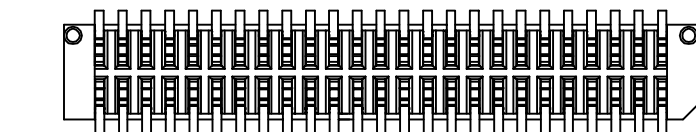
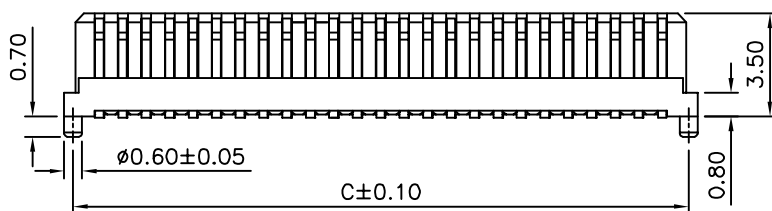
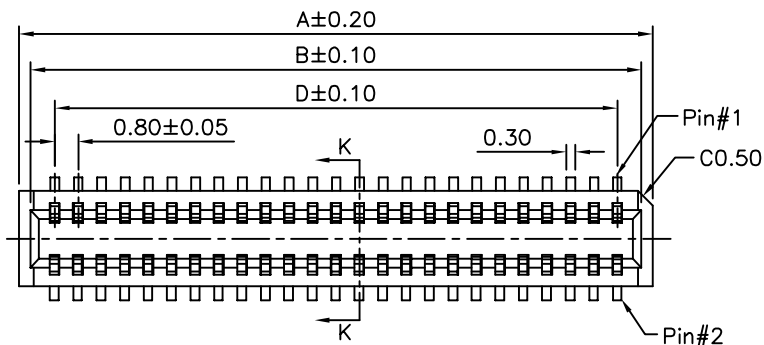


Mating 90° Dimension

AUK P/N(Plug)	AUK P/N(Socket)	A1	H1	E
NPEXXP47SW-H	NPEXXS08R-H	3.55	5.65	0.95



Mating 180° Dimension

AUK P/N(Plug)	AUK P/N(Socket)	A2	H2
NPEXXP37R-H	NPEXXS08R-H	3.65	4.50
NPEXXP42R-H	NPEXXS08R-H	4.15	5.00
NPEXXP52R-H	NPEXXS08R-H	5.15	6.00
NPEXXP56R-H	NPEXXS08R-H	5.65	6.50

**SPECIFICATION**

- General Characteristics:**
  - 0.8mm Board To Board Female XXP SMT
  - 180° With Post Without Fitting Nail Stacking
  - Height=4.5/5.0/5.65/6.0/6.5mm
- Material&Finish:**
  - Housing:PA46(UL94V-0),Beige
  - Contact:Phosphor Bronze,Gold Plated Over Nickel
- Electrical Characteristics:**
  - Current Rating:0.5A AC/DC
  - Voltage Rating:100V AC/DC
  - Contact Resistance:40 Milliohms Max.
  - Insulation Resistance:100 Megaohms Min.
  - Withstanding Voltage:500V RMS AC For 1 Minute
- Environmental Characteristics:**
  - Operation Temperature Range:-40°C~+105°C
- RoHS Compliant**

△ NPE XXX S08 R - H  
(1) (2) (3) (4) (5)

- (1) NPE:0.8mm Board To Board SMT Straight
- (2) XXX:No. Of Position
- (3) S08:4.5/5.0/5.65/6.0/6.5mm Stacking Height,Female
- (4) R:With Post Without Fitting Nail
- (5) H:RoHS Compliant

Pin	A	B	C	D	Pin	A	B	C	D
10	5.60	4.85	5.00	3.20	34	15.20	14.45	14.60	12.80
12	6.40	5.65	5.80	4.00	36	16.00	15.25	15.40	13.60
14	7.20	6.45	6.60	4.80	38	16.80	16.05	16.20	14.40
16	8.00	7.25	7.40	5.60	40	17.60	16.85	17.00	15.20
18	8.80	8.05	8.20	6.40	50	21.60	20.85	21.00	19.20
20	9.60	8.85	9.00	7.20	60	25.60	24.85	25.00	23.20
22	10.40	9.65	9.80	8.00	68	28.80	28.05	28.20	26.40
24	11.20	10.45	10.60	8.80	70	29.60	28.85	29.00	27.20
26	12.00	11.25	11.40	9.60	80	33.60	32.85	33.00	31.20
28	12.80	12.05	12.20	10.40	90	37.60	36.85	37.00	35.20
30	13.60	12.85	13.00	11.20	100	41.60	40.85	41.00	39.20
32	14.40	13.65	13.80	12.00					