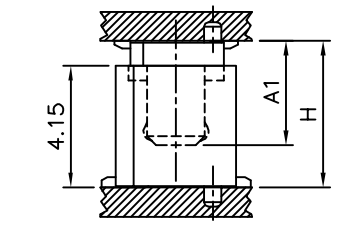
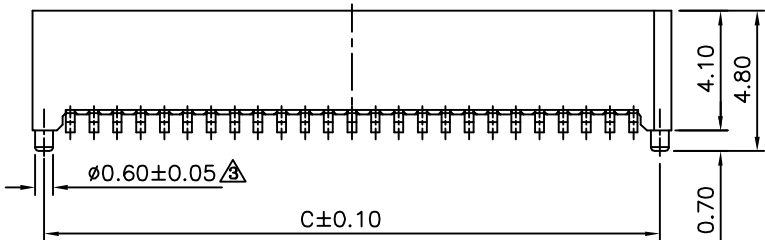
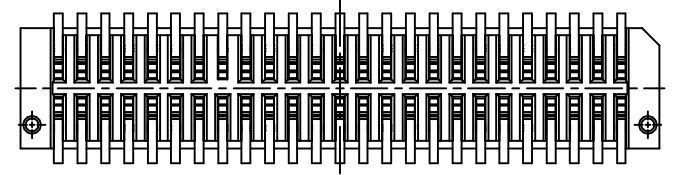


Section A-A



Mating Draw (Ref)



**△△△ SPECIFICATION**

1. General Characteristics:  
0.8mm Board To Board Male XXP SMT 180°  
With Post Stacking Height=5.0/5.5mm
2. Material&Finish:  
Insulator:PA46(UL94V-0),Beige  
Contact:Phosphor Bronze,Gold Plated Over Nickel
3. Electrical Characteristics:  
Current Rating:0.5A AC/DC  
Voltage Rating:100V AC/DC  
Contact Resistance:40 Milliohms Max.  
Insulation Resistance:100 Megaohms Min.  
Withstanding Voltage:500V RMS For One Minute
4. Environmental Characteristics:  
Operation Temperature Range:-40°C~+105°C
5. RoHS Compliant

Part No.	Part No.	Dim. A1	Dim. H
NPEXXXP42R-H	NPEXXXS08R-H	3.55	5.00
NPEXXXP42R-H	NPEXXXS14R-H	4.05	5.50

Pin	A	B	C	D	Pin	A	B	C	D
10	6.20	4.90	5.00	3.20	34	15.80	14.50	14.60	12.80
12	7.00	5.70	5.80	4.00	36	16.60	15.30	15.40	13.60
14	7.80	6.50	6.60	4.80	38	17.40	16.10	16.20	14.40
16	8.60	7.30	7.40	5.60	40	18.20	16.90	17.00	15.20
18	9.40	8.10	8.20	6.40	50	22.20	20.90	21.00	19.20
20	10.20	8.90	9.00	7.20	60	26.20	24.90	25.00	23.20
22	11.00	9.70	9.80	8.00	68	29.40	28.10	28.20	26.40
24	11.80	10.50	10.60	8.80	70	30.20	28.90	29.00	27.20
26	12.60	11.30	11.40	9.60	80	34.20	32.90	33.00	31.20
28	13.40	12.10	12.20	10.40	90	38.20	36.90	37.00	35.20
30	14.20	12.90	13.00	11.20	100	42.20	40.90	41.00	39.20
32	15.00	13.70	13.80	12.00					



CATEGORY	APPROVED BY	UNLESS OTHERWISE SPECIFIED
PART No. NPEXXXP42R-H	EMILY	TOLERANCES ARE
DRAWING No. NPEXXXP42R-H	CHECKED BY HZF	.X ±0.20
SCALE NONE	DRAWING BY SAN	.XX ±0.15
REV.	REV.	ANG.
	A3	UNIT mm

△ A3	Modify Data	HZF	05/14/2014
△ A2	Modify Data	HZF	08/01/2011
△ A1	Modify Data	HZF	01/17/2009
△ A0	NEW RELEASE	BECKY	02/17/2005
NO. REV.	REVISIONS	CHK	DATE