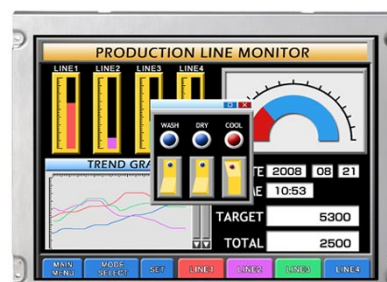


NL8060BC31-47D

12.1" SVGA Industrial use
[Features]

- High contrast (900:1)
- 16.77M/262K colors (LVDS RGB 8-bit/6-bit)
- Reversible-scan direction
- Wide temperature (-30°C to +80°C)
- Long-life LED backlight^{※1}



Pixel	800 (H) x 600 (V)
Display area	246.0 (H) x 184.5 (V) mm 12.1inches (31cm)
Display color	16,777,216 colors/ 262,144 colors
Pixel pitch	0.3075 (H) x 0.3075 (V) mm
Luminance	450cd/m ² (typ.)
Contrast ratio	900:1 (typ.)
Viewing angle ^{※2}	Up: 80°, Down: 80°, Left: 80°, Right: 80°
Response time ^{※3}	18ms (typ.)
Signal system	LVDS 1-port RGB 8-bit/6-bit
Power supply voltage	3.3V (typ.)
Power consumption	4.9W (typ.)
Operating temperature	-30°C to +80°C
Storage temperature	-30°C to +80°C
Polarizer surface	Antiglare
Module size	W 280.0 (typ.) x H 210.0 (typ.) x D 9.6 (max.) mm
Weight	580g (typ.)
Backlight	LED backlight(Replaceable)
LED driver	121PW02F

※1 70k hours long life LED

※2: Contrast ratio ≥ 10:1

※3: Ton+Toff (10%←→90%)

※All information is subject to change without notice.

※Screen images are simulated.

<NLT Technologies web site>

Japanese <http://www.nlt-technologies.co.jp/jp>

English <http://www.nlt-technologies.co.jp/en>

Last update:11/2015

©NLT Technologies,Ltd. 2011-2015