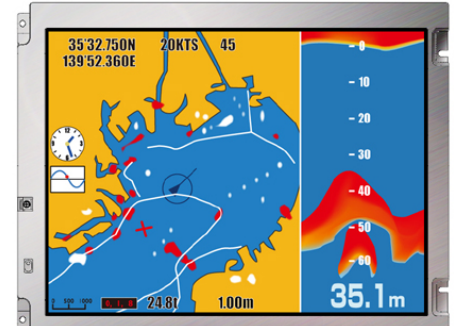


## NL8060BC26-35C

10.4" SVGA Industrial use

### [Features]

- **ColorXcell<sup>※1</sup>**
- **Adoption of T-EVT(Transmissive-Enhanced View TFT)**
- **High luminance(800cd/m<sup>2</sup>)**
- **High contrast(900:1)**
- **16.77M/262K colors (LVDS RGB 8-bit/6-bit)**
- **Wide temperature(-30°C to +80°C)**
- **Reversible-scan direction**
- **Long-life LED backlight<sup>※2</sup>**



Pixel	800(H) x 600(V)
Display area	211.2(H) x 158.4(V) mm 10.4 inches (26cm)
Display color	16,777,216 colors/ 262,144 colors
Pixel pitch	0.264(H) x 0.264(V) mm
Luminance	800cd/m <sup>2</sup> (typ.)
Contrast ratio	900:1 (typ.)
Viewing angle <sup>※3</sup>	Up: 80°,Down: 80°,Left: 80°,Right: 80°
Response time <sup>※4</sup>	18ms (typ.)
Signal system	LVDS 1-port RGB 8-bit/6-bit
Power supply voltage	3.3V
Power consumption	6.3W (typ.)
Operating temperature	-30°C to +80°C
Storage temperature	-30°C to +80°C
Polarizer surface	Clear + Antireflection
Module size	243.0 (typ.) x 185.1 (typ.) x 11.0 (max.) mm
Weight	475g (typ.)
Backlight	LED backlight(Replaceable)
LED driver	104PW01F

※1: ColorXcell Technology (Color Enhancement)

※2 70k hours long life LED

※3: Contrast ration ≥ 10:1

※4: Ton+Toff (10%←→90%)

※All information is subject to change without notice.

※Screen images are simulated.

<NLT Technologies web site>

Japanese <http://www.nlt-technologies.co.jp/jp>

English <http://www.nlt-technologies.co.jp/en>

Last update:11/2015

©NLT Technologies,Ltd. 2011-2015