

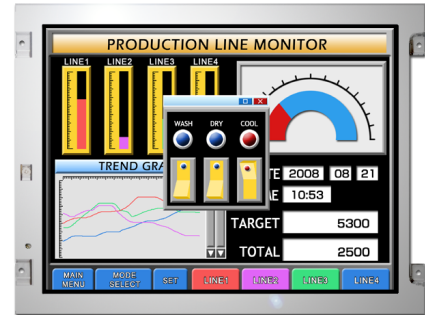
NL8060BC21-11F

8.4" SVGA

Industrial use

[Features]

- **ColorXcell^{※1}**
- **High luminance (800cd/m²)**
- **High contrast (800:1)**
- **16.77M/262K colors (LVDS RGB 8-bit/6-bit)**
- **Wide temperature (-30°C to +80°C)**
- **Reversible-scan direction**
- **Long-life LED backlight^{※2}**



Pixel	800(H) x 600(V)
Display area	170.4(H) x 127.8(V) mm 8.4 inches (21cm)
Display color	16,777,216 colors/ 262,144 colors
Pixel pitch	0.213(H) x 0.213(V) mm
Luminance	800cd/m ² (typ.)
Contrast ratio	800:1 (typ.)
Viewing angle ^{※3}	Up: 80°,Down: 80°,Left: 80°,Right: 80°
Response time ^{※4}	18ms (typ.)
Signal system	LVDS 1-port RGB 8-bit/6-bit
Power supply voltage	3.3V
Power consumption	5.0W (typ.)
Operating temperature	-30°C to +80°C
Storage temperature	-30°C to +80°C
Polarizer surface	Clear
Module size	200.0 (typ.) x 152.0 (typ.) x 8.7 (max.) mm
Weight	260g (typ.)
Backlight	LED backlight(Replaceable)
LED driver	104PW03F

※1: ColorXcell Technology (Color Enhancement)

※2 70k hours long life LED

※3: Contrast ratio ≥ 10:1

※4: Ton+Toff (10%←→90%)

※All information is subject to change without notice.

※Screen images are simulated.

<NLT Technologies web site>

Japanese <http://www.nlt-technologies.co.jp/jp>

English <http://www.nlt-technologies.co.jp/en>

Last update:11/2015

©NLT Technologies,Ltd. 2011-2015