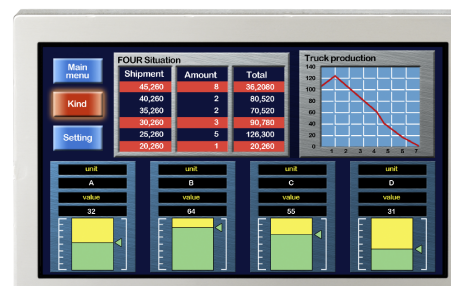


# NL8048AC19-13

**7.0" WVGA**
**Industrial use**
**[Features]**

- High contrast (800:1)
- 262K colors (LVDS RGB 6-bit)
- Wide temperature(-30°C to +80°C)
- Reversible-scan direction
- Long-life LED backlight<sup>※1</sup>



<b>Pixel</b>	800(H) × 480(V)
<b>Display area</b>	152.4(H) × 91.44(V)mm 7.0 inches (18cm)
<b>Display color</b>	262,144 colors
<b>Pixel pitch</b>	0.1905(H) × 0.1905(V)mm
<b>Luminance</b>	500cd/m <sup>2</sup> (typ.)
<b>Contrast ratio</b>	800:1 (typ.)
<b>Viewing angle<sup>※3</sup></b>	Up:80°, Down:80°, Left:80°, Right:80°
<b>Response time<sup>※4</sup></b>	8ms (typ.)
<b>Signal system</b>	LVDS 1-port RGB 6-bit
<b>Power supply voltage</b>	LCD signal processing board:3.3V, LED driver:12.0V
<b>Power consumption</b>	3.0W (typ.)
<b>Operating temperature</b>	-30°C to +80°C
<b>Storage temperature</b>	-40°C to +80°C
<b>Polarizer surface</b>	Clear
<b>Module size</b>	W 170.0 (typ.) x H 111.0 (typ.) x D 9.0 (max.) mm
<b>Weight</b>	185g (typ.)
<b>Backlight</b>	LED backlight
<b>LED driver</b>	Built in

※1 100k hours long life LED

※2: Contrast ratio ≥ 10:1

※3: Ton+Toff (10%←→90%)

※All information is subject to change without notice.

※Screen images are simulated.

< NLT Technologies web site >

Japanese <http://www.nlt-technologies.co.jp/jp>

English <http://www.nlt-technologies.co.jp/en>

Last update:11/2015

©NLT Technologies,Ltd. 2011-2015