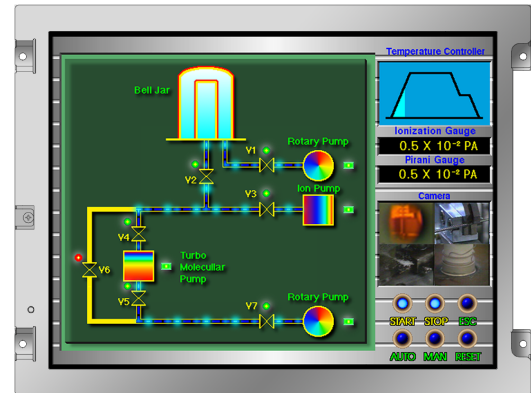


NL6448BC26-27D

8.4" VGA
Industrial use
[Features]

- **ColorXcell**^{※1}
- **High luminance (500cd/m²)**
- **High contrast (1,000:1)**
- **16.77M/262K colors (LVDS RGB 8-bit/6-bit)**
- **Wide temperature (-30°C to +80°C)**
- **Reversible-scan direction**
- **Long-life LED backlight**^{※2}



| | |
|------------------------------------|--|
| Pixel | 640(H) x 480(V) |
| Display area | 170.88(H) x 128.16(V)mm 8.4 inches (21cm) |
| Display color | 16,777,216 colors/ 262,144 colors |
| Pixel pitch | 0.267(H) x 0.267(V)mm |
| Luminance | 500cd/m ² (typ.) |
| Contrast ratio | 1,000:1 (typ.) |
| Viewing angle ^{※3} | Up: 80°,Down: 80°,Left: 80°,Right: 80° |
| Response time ^{※4} | 18ms (typ.) |
| Signal system | LVDS 1-port RGB 8-bit/6-bit |
| Power supply voltage | 3.3V |
| Power consumption | 3.1W (typ.) |
| Operating temperature | -30°C to +80°C |
| Storage temperature | -30°C to +80°C |
| Polarizer surface | Antiglare |
| Module size | 200.0 (typ.) x 152.0 (typ.) x 8.7 (max.)mm |
| Weight | 260g (typ.) |
| Backlight | LED backlight(Replaceable) |
| LED driver | 104PW03F |

※1: ColorXcell Technology (Color Enhancement)

※2 70k hours long life LED

※3: Contrast ratio ≥ 10:1

※4: Ton+Toff (10%←→90%)

※All information is subject to change without notice.

※Screen images are simulated.

<NLT Technologies web site>

Japanese <http://www.nlt-technologies.co.jp/jp>

English <http://www.nlt-technologies.co.jp/en>