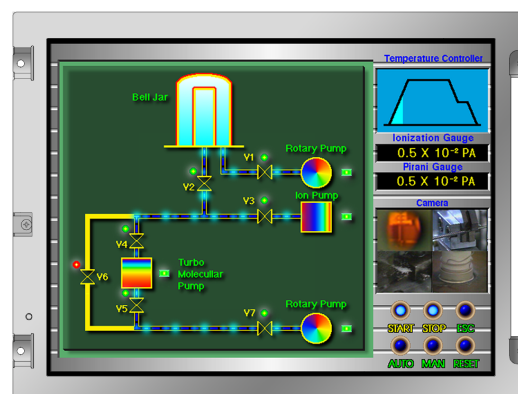


NL6448BC26-26

8.4" VGA
Industrial use
[Features]

- High luminance (500cd/m²)
- High contrast (1,000:1)
- 262K colors (CMOS RGB 6-bit)
- Wide temperature (-30°C to +80°C)
- Reversible-scan direction
- Long-life LED backlight^{※1}



Pixel	640(H) x 480(V)
Display area	170.88(H) x 128.16(V)mm 8.4 inches (21cm)
Display color	262,144 colors
Pixel pitch	0.267(H) x 0.267(V)mm
Luminance	500cd/m ² (typ.)
Contrast ratio	1,000:1 (typ.)
Viewing angle^{※2}	Up: 80°,Down: 80°,Left: 80°,Right: 80°
Response time^{※3}	18ms (typ.)
Signal system	CMOS RGB 6-bit
Power supply voltage	3.3V / 5.0V
Power consumption	3.2W (typ.)
Operating temperature	-30°C to +80°C
Storage temperature	-30°C to +80°C
Polarizer surface	Clear
Module size	200.0 (typ.) x 152.0 (typ.) x 8.7 (max.)mm
Weight	260g (typ.)
Backlight	LED backlight(Replaceable)
LED driver	104PW03F

※1: 70k hours long life LED

※2: Contrast ratio ≥ 10:1

※3: Ton+Toff (10%←→90%)

※All information is subject to change without notice.

※Screen images are simulated.

<NLT Technologies web site>

Japanese <http://www.nlt-technologies.co.jp/jp>

English <http://www.nlt-technologies.co.jp/en>

Last update:11/2015

©NLT Technologies,Ltd. 2011-2015