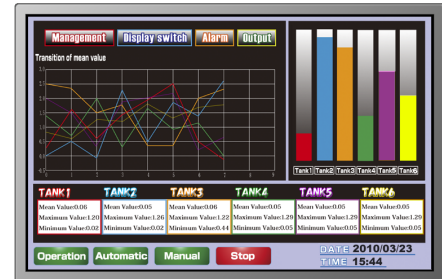


NL12880BC20-07F

12.1" WXGA
Industrial use

【Special Features】

- **ColorXcell^{※1}**
- **High luminance(1800cd/m²)**
- **High contrast(800:1)**
- **16.77M/262K colors (LVDS RGB 8-bit/6-bit)**
- **Reversible-scan direction**



Pixel	1,280(H) x 800(V)
Display area	261.12(H) x 163.2(V)mm 12.1 inches (31cm)
Display color	16,777,216 colors/262,144 colors
Pixel pitch	0.204(H) x 0.204(V)mm
Luminance	1,800cd/m ² (typ.)
Contrast ratio	800:1 (typ.)
Viewing angle^{※2}	Up: 80°, Down: 80°, Left: 80°, Right: 80°
Response time^{※3}	15ms (typ.)
Signal system	LVDS 1 port RGB 8-bit/6-bit
Power supply voltage	3.3V
Power consumption	16.7W (typ.)
Operating temperature	-20°C to +70°C
Storage temperature	-30°C to +80°C
Polarizer surface	Antiglare
Module size	W 277.7 (typ.) x H 180.6 (typ.) x D 9.2 (max.) mm
Weight	470g (typ.)
Backlight	LED backlight (Replaceable)
LED driver	Not provided

※1: ColorXcell Technology (Color Enhancement)

※2: Contrast ratio ≥ 10:1 ※3: Ton+Toff (10%←→90%)

※All information is subject to change without notice.

※Screen images are simulated.

< NLT Technologies web site >

Japanese <http://www.nlt-technologies.co.jp/jp>

English <http://www.nlt-technologies.co.jp/en>