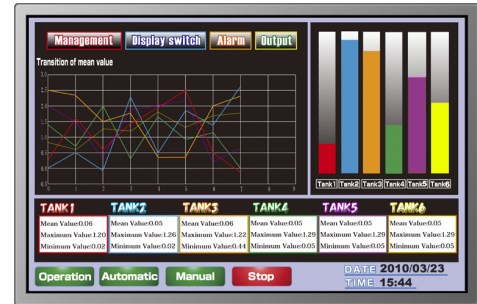


NL12880BC20-05D

12.1" WXGA
Industrial use
[Features]

- **ColorXcell^{※1}**
- **Ultra-wide viewing angle(Super Fine TFT(SFT))**
- **High contrast (1,000:1)**
- **16.77M/262K colors (LVDS RGB 8-bit/6-bit)**
- **Reversible-scan direction**
- **Long-life LED backlight^{※2}**



Pixel	1,280(H) x 800(V)
Display area	261.12(H) x 163.2(V)mm 12.1 inches (31cm)
Display color	16,777,216 colors/262,144 colors
Pixel pitch	0.204(H) x 0.204(V)mm
Luminance	450cd/m ² (typ.)
Contrast ratio	1,000:1 (typ.)
Viewing angle^{※3}	Up: 88°, Down: 88°, Left: 88°, Right: 88°
Response time^{※4}	25ms (typ.)
Signal system	LVDS 1-port RGB 8-bit/6-bit
Power supply voltage	3.3V
Power consumption	6.45W (typ.)
Operating temperature	-20°C to +70°C
Storage temperature	-30°C to +80°C
Polarizer surface	Antiglare
Module size	W 277.7 (typ.) x H 180.6 (typ.) x D 9.2 (max.) mm
Weight	460g (typ.)
Backlight	LED backlight (Replaceable)
LED driver	104PW03F

※1: ColorXcell Technology (Color Enhancement)

※2 70k hours long life LED

※3: Contrast ratio ≥ 10:1

※4: Ton+Toff (10%←→90%)

※All information is subject to change without notice.

※Screen images are simulated.

<NLT Technologies web site>

Japanese <http://www.nlt-technologies.co.jp/jp>

English <http://www.nlt-technologies.co.jp/en>