

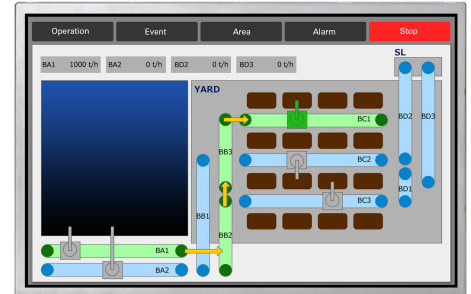
NL12880AC20-14D

12.1" WXGA

Industrial use

[Features]

- High contrast
- ColorXcell technology (Color Enhancement)
- Wide temperature range
- LVDS interface
- Reversible-scan direction
- Selectable 8-bit or 6-bit digital signals for data of RGB
- Small foot print
- Long life LED backlight built in LED driver*1
- Replaceable lamp for backlight



Pixel	1,280(H) x 800(V)
Display area	261.12(H) x 163.2(V)mm (12.1 inches (31cm) diagonal)
Display color	16,777,216 colors/ 262,144 colors
Pixel pitch	0.204(H) x 0.204(V)mm
Luminance	450cd/m ² (typ.)
Contrast ratio	800:1 (typ.)
Viewing angle^{*2}	Up: 80° (typ.), Down: 80° (typ.), Left: 80° (typ.), Right: 80° (typ.)
Response time^{*3}	15ms (typ.)
Interface	LVDS 1 port, RGB 8-bit/ 6-bit
Power supply voltage	LCD panel signal processing board: 3.3V (typ.) LED driver: 12.0V (typ.)
Power consumption	7.0W (typ.)
Operating temperature	-30°C to +80°C
Storage temperature	-30°C to +80°C
Polarizer surface	Antiglare
Module size	277.7 (typ.) x 180.6 (typ.) x 9.2 (max.) mm
Weight	470g (typ.)
Backlight	LED backlight (Replaceable)
LED driver	Built-in

*1: 100k hours long life LED, *2: Contrast ratio ≥ 10:1, *3: Ton+Toff (10%←→90%)

*All information is subject to change without notice.

*Screen image is simulated.

<NLT Technologies web site>

Japanese <http://www.nlt-technologies.co.jp/jp>

English <http://www.nlt-technologies.co.jp/en>

Published date: November 2016
©NLT Technologies, Ltd. 2016