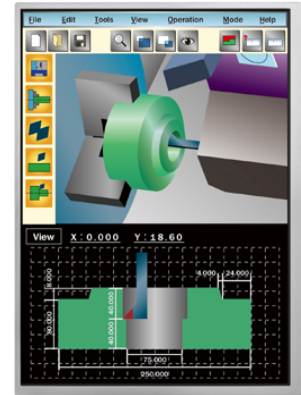


NL10276BC24-21L

12.1" XGA
Industrial use
[Features]

- **Portrait view compatible**^{※1}
- **High contrast (900 : 1)**
- **16.77M/262K colors (LVDS RGB 8-bit/6-bit)**
- **Reversible-scan direction**
- **Wide temperature (-30°C to +80°C)**
- **Long-life LED backlight**^{※2}



Pixel	1,024 (H) x 768 (V)
Display area	245.76 (H) x 184.32 (V) mm 12.1inches (31cm)
Display color	16,777,216 colors/ 262,144 colors
Pixel pitch	0.24(H) x 0.24(V) mm
Luminance	450cd/m ² (typ.)
Contrast ratio	900:1 (typ.)
Viewing angle ^{※2}	Up: 80°, Down: 80°, Left: 80°, Right: 80°
Response time ^{※3}	18ms (typ.)
Signal system	LVDS 1-port RGB 8-bit/6-bit
Power supply voltage	3.3V
Power consumption	5.2W (typ.)
Operating temperature	-30°C to +80°C
Storage temperature	-30°C to +80°C
Polarizer surface	Clear
Module size	W 260.5(typ.) x H 203.0(typ.) x D 9.2(max.) mm
Weight	490g (typ.)
Backlight	LED backlight(Replaceable)
LED driver	104PW03F

※1 Portrait view signals are to be prepared by a customer

※2 70k hours long life LED

※3: Contrast ratio ≥ 10:1

※4: Ton+Toff (10%←→90%)

※All information is subject to change without notice.

※Screen images are simulated.

<NLT Technologies web site>

Japanese <http://www.nlt-technologies.co.jp/jp>

English <http://www.nlt-technologies.co.jp/en>

Last update:11/2015

©NLT Technologies,Ltd. 2011-2015