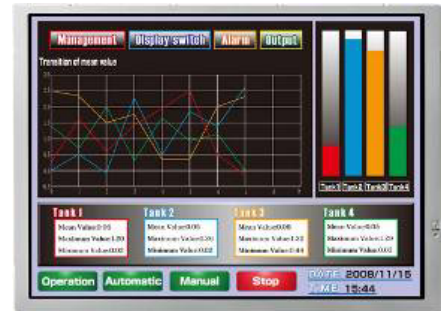


# NL10276BC20-12

**10.4" XGA**
**Industrial use**
**[Features]**

- Thin structure
- Light weight
- 16.77M/262K colors (LVDS RGB 8-bit/6-bit)
- Reversible-scan direction



<b>Pixel</b>	1,024(H) x 768(V)
<b>Display area</b>	210.432(H) x 157.824(V) mm 10.4 inches (26cm)
<b>Display color</b>	16,777,216 colors/ 262,144 colors
<b>Pixel pitch</b>	0.2055(H) x 0.2055(V) mm
<b>Luminance</b>	150cd/m <sup>2</sup> (typ.)
<b>Contrast ratio</b>	400:1 (typ.)
<b>Viewing angle※1</b>	Up: 40°,Down: 20°,Left: 45°,Right: 45°
<b>Response time※2</b>	18ms (typ.)
<b>Signal system</b>	LVDS 1-port RGB 8-bit/6-bit
<b>Power supply voltage</b>	3.3V
<b>Power consumption</b>	3.4W
<b>Operating temperature</b>	-20°C to +70°C
<b>Storage temperature</b>	-30°C to +80°C
<b>Polarizer surface</b>	Clear
<b>Module size</b>	231.2 (typ.) x 174.6 (typ.) x 5.8 (max.) mm
<b>Weight</b>	160g (typ.)
<b>Backlight</b>	LED backlight(Replaceable)
<b>LED driver</b>	Not provided

※1: Contrast ratio ≥ 10:1

※2: Ton+Toff (10%←→90%)

※All information is subject to change without notice.

※Screen images are simulated.

**<NLT Technologies web site>**
**Japanese <http://www.nlt-technologies.co.jp/jp>**
**English <http://www.nlt-technologies.co.jp/en>**

Last update:11/2015

©NLT Technologies,Ltd. 2011-2015