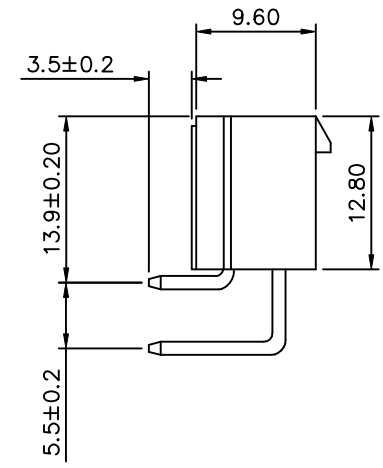
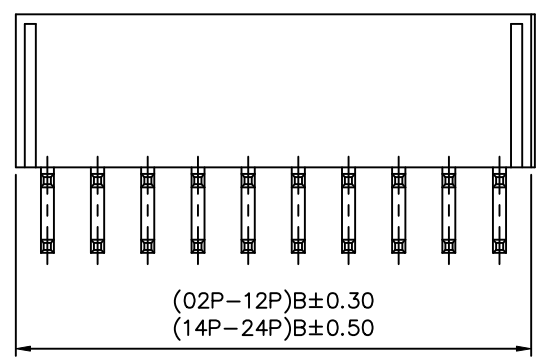
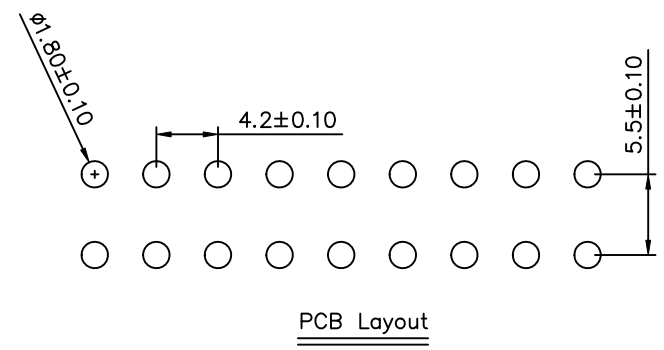
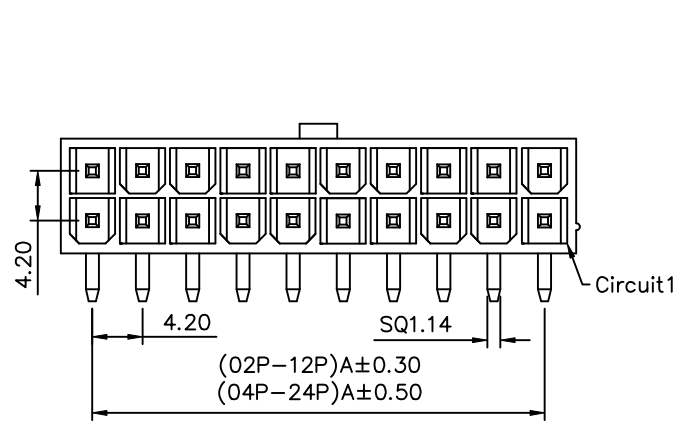


SPECIFICATIONS

- ⚠ Current Rating:9A AC/DC
- Voltage Rating:600V AC/DC
- Insulation Resistance:1000 Megohms Min.
- Withstand Voltage:1500V AC/Minute
- Material:Pin:Brass Tin-Plated
- Base:Nylon 66,UL 94V-2
- Circuits:2-24Circuits Available
- RoHS Compliant



Circuits	A	B
02	--	5.40
04	4.20	9.60
06	8.40	13.80
08	12.60	18.00
10	16.80	22.20
12	21.00	26.40
14	25.20	30.60
16	29.40	34.80
18	33.60	39.00
20	37.80	43.20
22	42.00	47.40
24	46.20	51.60

AUK A MEMBER OF AUK GROUP
太聯事業股份有限公司
AUK CONTRACTORS CO., LTD.

CATEGORY		APPROVED BY		UNLESS OTHERWISE SPECIFIED TOLERANCES ARE .X ±0.50 .XX ±0.25 .XXX ±0.10 ANG. ±2°				
PART No.	MF2XXXPRX-H	CHECKED BY	MEI BECKY		NO.	REV.	REVISIONS	CHK
DRAWING No.	MF2XXXPRX-H	DRAWING BY	JLT	⚠ A2		Modify Current 5A → 9A	HZF	09/02/2008
				⚠ A1		Add Dim.	BECKY	03/16/2006
				⚠ A0		NEW RELEASE	BECKY	03/09/2006
SCALE	NONE	REV.	A2	UNIT	mm			