



With side covers

### Constant Voltage Driver

Model: LV100W24 G2  
LV100W48



Model	Output Current	Input Current	Input Power	Output Power Range	PF	Efficiency (*Typical)	Output Voltage	No load Voltage
LV100W24 G2	0-4200mA	0.55A	≤110W	0-100W	≥0.95	91%	24V	24V
LV100W48	0-2100mA	0.55A	≤110W	0-100W	≥0.95	91%	48V	48V

\* Test result @230V, 50Hz, Full Load.

\* Recommended minimum full load power is 10% load.

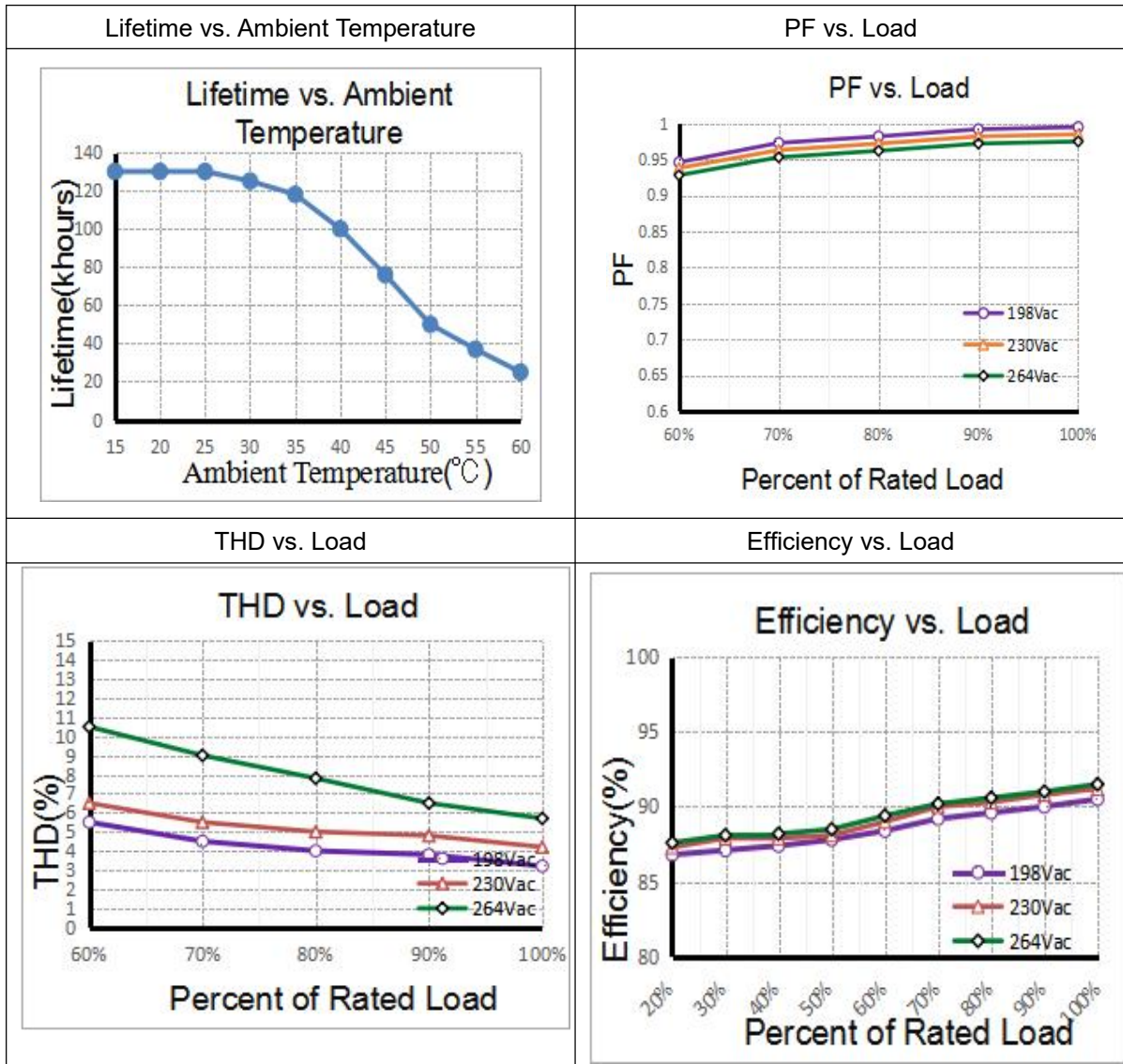
## 1. Parameters

Category	Item	Technical Norm
Features	Output Type	Constant Voltage
	Output Features	Isolation
	IP Grade	IP20
	Insulation Class	Class II
Input	Rated Input Voltage	220-240VAC
	Range of Input Voltage	198-264VAC or 180-280VDC
	Frequency	0/50/60Hz
	Input Current	≤0.55A(230VAC, full load)
	Input Power	≤110W(230VAC, full load)
	Power Factor	≥0.95(230VAC, full load)
	THD	≤15% (230VAC, full load)
	No-load Power Consumption	≤0.5W @230VAC
	Inrush Current	≤40A/16us (230VAC, full load)
Output	Output Voltage Range	24VDC ± 5% or 48VDC ± 5% (Potentiometer adjusts output voltage ± 2V)
	No Load Voltage	24VDC ± 5% or 48VDC ± 5%(Potentiometer adjusts output voltage ± 2V)
	Output Current	0-4200mA or 0-2100mA(Max. output)
	Max. Output Power	100W
	Efficiency	≥91% (230VAC, full load)
	Current Ripple(< 120 Hz)	±5% (Imax-Imin)/(Imax+Imin)
	Output Voltage Ripple	<240mV <sub>PK-PK</sub> (0.5%) or <480mV <sub>PK-PK</sub> (0.5%)

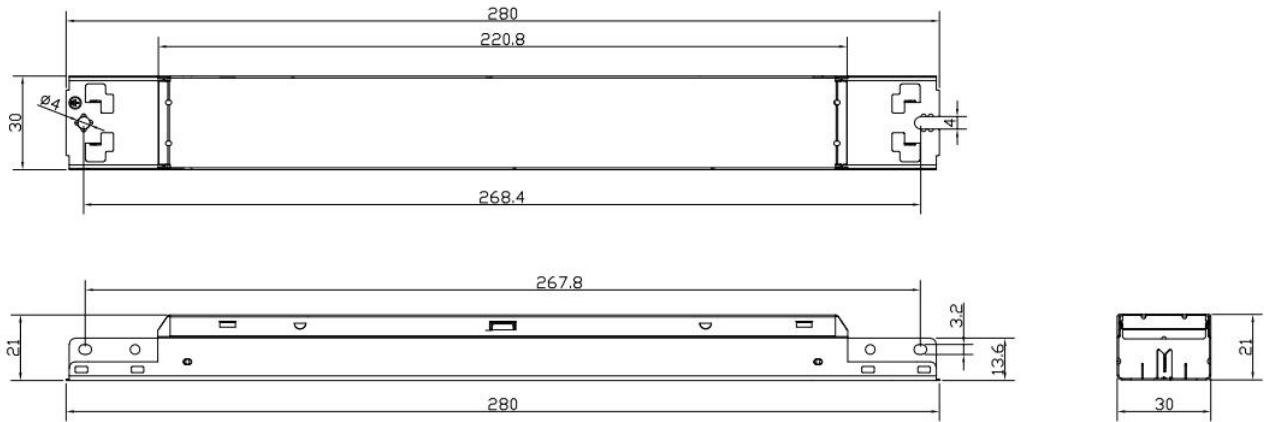
	Line Regulation	±5%
	Load Regulation	±5%
	PstLM	≤1
	SVM	≤0.4
	Overshoot	<105%Vo
	Current Accuracy	±5%
	Started Delay Time	≤0.5S(230VAC, full load)
Protection	Short Circuit Protection	Auto Recovery
	Overload Protection	Auto Recovery
	Over Voltage Protection	110%-150%Vo, Auto Recovery
	Over Temperature Protection	90<Tc<110°C, Auto Recovery
	No-load Protection	Auto Recovery
	Insulation voltage	3000V 5mA 60S between P-S
	Insulation resistance	>100M ohm @ 500VDC
	Leakage current	I/P to O/P <0.7mA
Environment	Ta/Operation Temperature	-20....+50°C
	Ts/Storage Temperature	-25....+85°C
	Tc/Enclosure Temperature	85°C
	Humidity	10%....90%RH
	Atmosphere	86-108KPa
Construction	Connection Method	Push-in Terminal
	Installation	Built-in&Independent (Can be either used built-in or independent with side covers)
	PRI Wire preparation	0.75-2.5 <sup>²</sup> / 8-9mm
	SEC Wire preparation	0.75-2.5 <sup>²</sup> / 8-9mm
	Dimension	360*30*21mm (L*W*H)
Standards	Certification	CE ENEC SAA
	Safety Standards	EN 61347-1:2015/A1:2021 EN 61347-2-13:2014/A1:2017 EN IEC 62384:2020 EN 62493:2015 AS61347.2.13:2018 AS/NZS61347.1:2016 Inc A1 BS EN 61347-1:2015/A1:2021 BS EN 61347-2-13:2014/A1:2017 BS EN 62493:2015 BS EN IEC 62384:2020
	EMC Standards	EN IEC 55015:2019 EN IEC 55015:2019/A11:2020 EN IEC 61000-3-2:2019/A1:2021 EN 61000-3-3:2013/A2:2021 EN 61547:2009
	Performance	EN62384:2020
	Surge	L-N/1KV (L/N)-PE/2KV
Others	RoHS	complied to 2011/65/EU



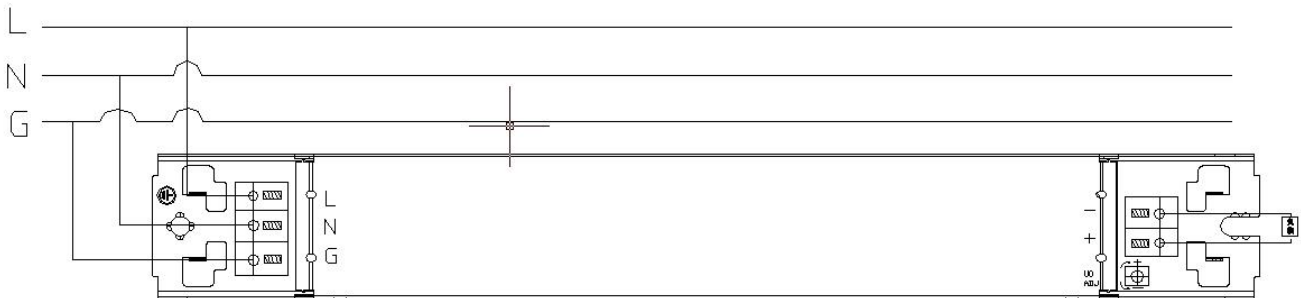
## 4. Electrical values



### 5. Dimension (Unit: mm)



### 6. Wiring Diagram



### 7. Packing information

Packing way	Model	Type	Carton L*W*H(mm)	Pcs/ Carton	Net weight/ Pcs(kg)	Net weight/ Carton(kg)	Gross weight/ Carton(kg)
Industrial	LV100W24 G2 LV100W48	Built-in	415*330*160	50	0.240	12	12.45
		Independent	335*300*138	50	0.224	11.2	11.65

### 8. Wiring instructions

- All connections must be kept as short as possible to ensure good EMI behaviour
- Mains leads should be kept apart from LED Driver and other leads (ideally 5 – 10 cm distance)
- Advice the maximum length of output wires is 0.5 m
- Secondary switching is not permitted ( Except for constant voltage )
- Incorrect wiring can damage LED modules.
- The wiring must be protected against short circuits to earth (sharp edged metals parts, metal cable clips, louver, etc.)
- Hot plug-in is not supported due to residual output voltage of > 0 V up to mains voltage. Danger to life.
- When connecting an LED load, restart the device to activate the LED output.

### 9. Replace LED module

- Mains off
- Remove LED module
- Wait for 30 seconds
- Connect LED module again
- Hot plug-in or secondary switching of LEDs is not permitted and may cause a very high current to the LEDs

### 10. REVISION HISTORY

DATE	REV	Modification details
2025-01-14	V1.0	Initial release