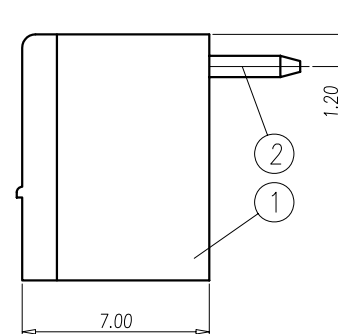


P.C.B. LAYOUT



NOTES 1:

UL Standard :

1. Rating: 300V 8A
PITCH: 3.81 mm
2. Insulation Withstands Voltage:
AC 2000V at 1 minute
3. Using Temperature Range:
-40°C~+120°C

IEC Standard :

1. Rating: 320V 14A
2. Rate Impulse Voltage: 2500V
3. Insulation Resistance:
500M Ω or more at DC500V
4. Material Group : I
5. Pollution Degree : 2
6. Overvoltage Category: II
7. Using Temperature Range:
-40°C~+110°C

NOTES 2:

1. RoHS Compliance.
2. Through hole reflow soldering
Temperature: 245°C

Normal Geometric Tolerancing			
—	//	≡	⊥
0 to 100	0.2	0 to 10	0.2
over 100 to 150	0.3	over 10	0.3
over 150	0.5		
Total Pitch Tolerances	Normal dimension Tolerances		
0<U<=30	±0.20	0~30	±0.25
30<U<=53	±0.25	over 30~53	±0.30
53<U<=70	±0.30	over 53~70	±0.35
70<U<=90	±0.35	over 70~90	±0.44
90<U<=115	±0.44	over 90~115	±0.55
115<U<=150	±0.55	over 115~150	±0.70
150<U<=200	±0.70	over 150~200	±0.85
200<U<=250	±0.85	over 200~250	±1.00
250<U<=320	±1.00	over 250~320	±1.20

2	SOLDER PIN	COPPER ALLOY	Tin Plated
1	包射零件	COPPER ALLOY	M2.5
	HOUSING	PA+GF	UL94-V0 BLACK
ITEM	NAME OF PART	MATERIAL	NOTES

DWG.	ZTM	DATE	14.07.24	UNITS	MM	SHEET/OF	1 / 1
CHK.		DATE		SCALE	5:1 (:)		
APP.		DATE		NAME		ECH381RM-XXPTHT	
				NAME		ECH381RM-XXPTHT	
DINKLE ENTERPRISE CO., LTD				DWG NO.		SP-03-381RMTH	

REV.	CONTENT	CHK.	DATE
3			