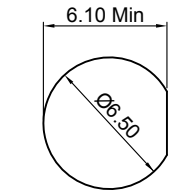
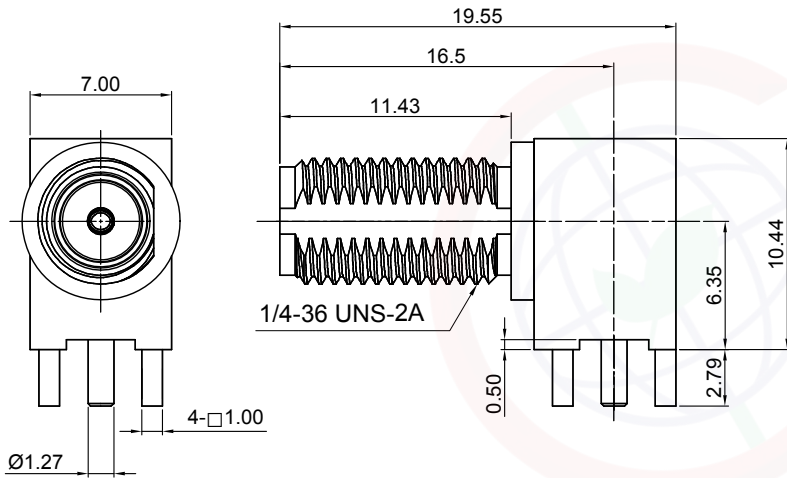
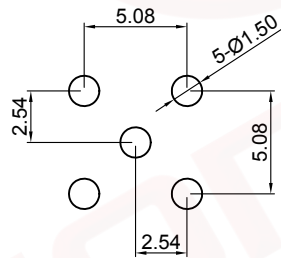


P/No.: DS1152-01-S01R8W-ELTECH-049

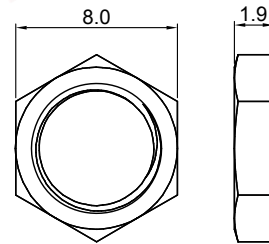
REV.	DESCRIPTION	DRAWN	CHECKED	APPROVED
A	NEW RELEASE	JLZ 02/17/22'		



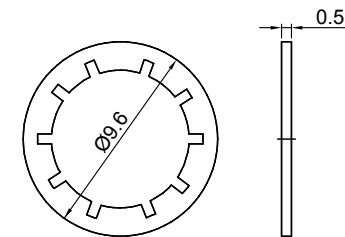
Recommended Panel Cutout



Recommend PCB Layout
Tolerance=±0.05mm



Nut



Washer

Notes:

1.Materials:

- 1.1. Contact: Copper Alloy, Full Gold Flash Plated.
- 1.2. Shell: Copper Alloy, Full Gold Flash Plated.
- 1.3. Insulator: PTFE.

2.Specifications:

- 2.1. Contact Resistance: 10mΩ max.
- 2.2. Insulation Resistance: 1000MΩ min.
- 2.3. Dielectric Withstanding Voltage: 1000V min.
- 2.4. Temperature Range: -40~+200°C.
- 2.5. Impedance: 50Ω.
- 2.6. Operating Cycles: 400 Cycles min.

3.Packing Type: Tray.

GENERAL TOLERANCE	ANGLE TOLERANCE	PROJECTION	TITLE	SMA Connector Female R/A Type L=19.55mm
X. ±0.60	X. ±5°	UNITS	mm	
.X ±0.38	.X ±3°	SHEET SIZE	A4	
.XX ±0.25	.XX ±2°		SERIES	DS1152-01 SERIES

FOR ELTECH ONLY

DRAWING TYPE	CUSTOMER		
SCALE	1:1	SHEET	1 OF 1
DRAWING NO.	C-DS1152-01-S01R8W-ELTECH-049-A		

晨翔电子有限公司
CONNFLY CONNFLY ELECTRONIC CO. LTD

The information provided herein is from CONNFLY Electronic Co., Ltd. and is confidential. Any disclosure to a party other than the recipient is prohibited. The intellectual properties and its rights of CONNFLY Electronic Co., Ltd. are reserved. All rights reserved. CONNFLY Electronic Co., Ltd. does not constitute authorization of its use or modification in any format or manner. CONNFLY may enforce its intellectual property rights at its own discretion; failures or delays to exercise such rights does not constitute a waiver of such rights.