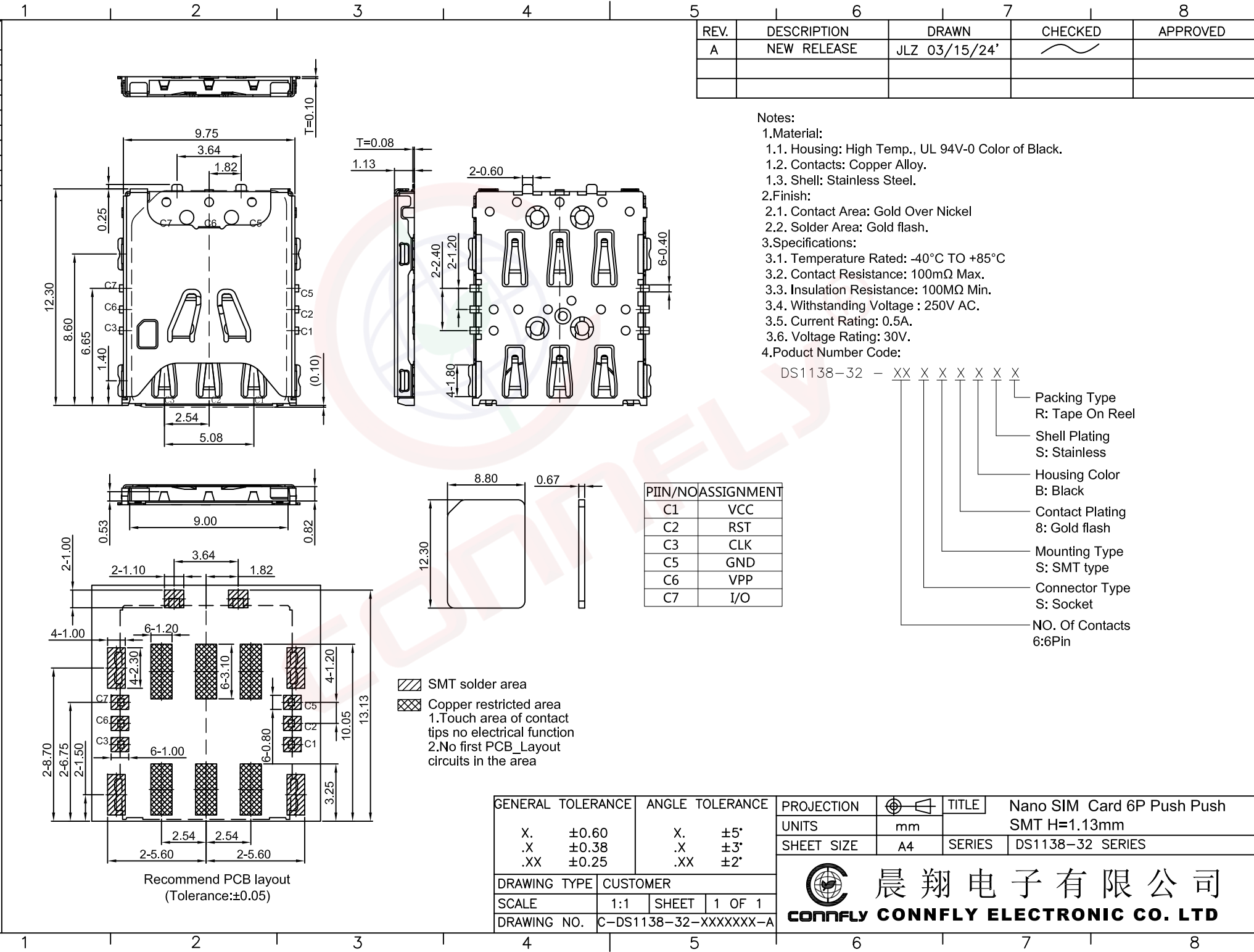


The information provided herein is from CONNELY Electronic Co., Ltd. and is confidential. Any disclosure to a party other than the recipient is prohibited. The intellectual properties and its rights contained herein, including but not limited to, trademarks, patents, copyrights, trade secrets, and technical know-how, are owned exclusively by CONNELY or its affiliates. Unauthorized use of this information in any format or manner. CONNELY may enforce its intellectual property rights at its own discretion; failures or delays to exercise such rights does not constitute a waiver of such rights.



REV.	DESCRIPTION	DRAWN	CHECKED	APPROVED
A	NEW RELEASE	JLZ 03/15/24'		

- Notes:
- Material:
 - Housing: High Temp., UL 94V-0 Color of Black.
 - Contacts: Copper Alloy.
 - Shell: Stainless Steel.
 - Finish:
 - Contact Area: Gold Over Nickel
 - Solder Area: Gold flash.
 - Specifications:
 - Temperature Rated: -40°C TO +85°C
 - Contact Resistance: 100mΩ Max.
 - Insulation Resistance: 100MΩ Min.
 - Withstanding Voltage : 250V AC.
 - Current Rating: 0.5A.
 - Voltage Rating: 30V.
 - Product Number Code:

DS1138-32 - XX X X X X X X

- Packing Type
R: Tape On Reel
- Shell Plating
S: Stainless
- Housing Color
B: Black
- Contact Plating
8: Gold flash
- Mounting Type
S: SMT type
- Connector Type
S: Socket
- NO. Of Contacts
6:6Pin

PIIN/NO	ASSIGNMENT
C1	VCC
C2	RST
C3	CLK
C5	GND
C6	VPP
C7	I/O

- SMT solder area
- Copper restricted area
 - Touch area of contact tips no electrical function
 - No first PCB_Layout circuits in the area

Recommend PCB layout
(Tolerance:±0.05)

GENERAL TOLERANCE		ANGLE TOLERANCE		PROJECTION		TITLE	Nano SIM Card 6P Push Push
X.	±0.60	X.	±5°	UNITS	mm	SMT H=1.13mm	
.X	±0.38	.X	±3°	SHEET SIZE	A4	SERIES	DS1138-32 SERIES
.XX	±0.25	.XX	±2°	晨翔电子有限公司 CONNELY CONNELY ELECTRONIC CO. LTD			
DRAWING TYPE		CUSTOMER					
SCALE		1:1 SHEET 1 OF 1					
DRAWING NO.		C-DS1138-32-XXXXXXX-A					