

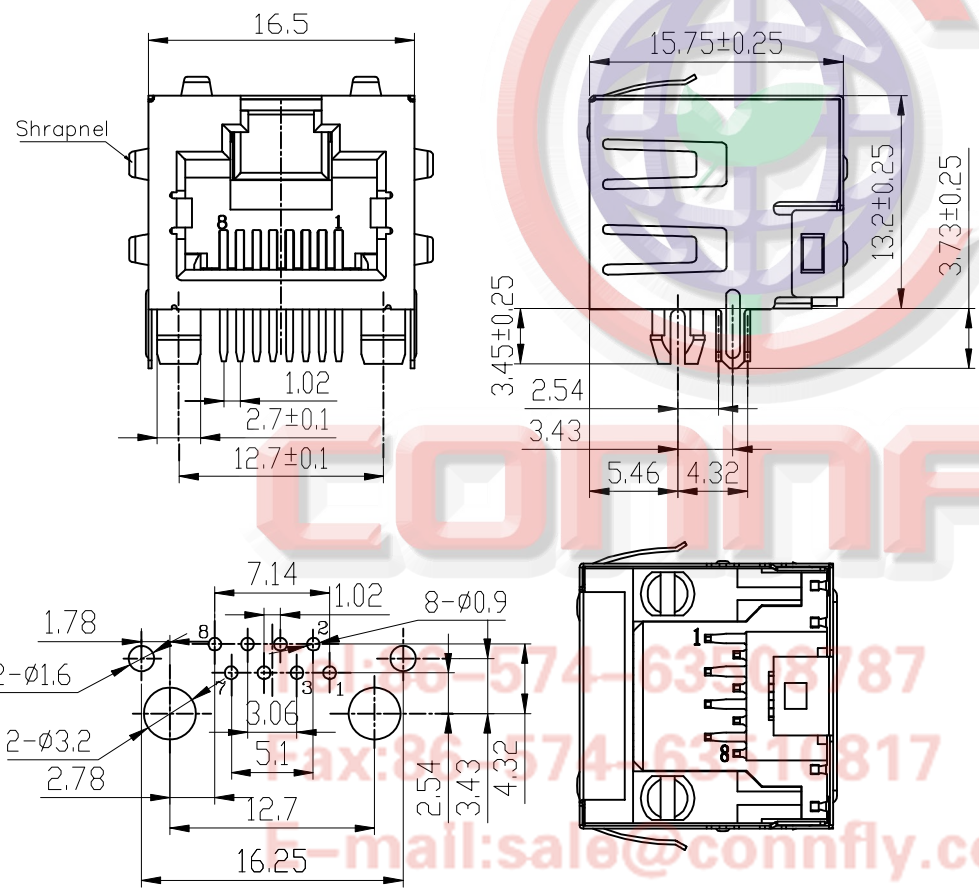
REV.	DESCRIPTION	DRAWN	CHECKED	APPROVED
A	NEW RELEASE	JLZ 06/08/16'		

NOTES:

- ELECTRICAL CHARACTERISTICS:
 - CONTACT RESISTANCE: 20mΩ Max.
 - DIELECTRIC WITHSTANDING VOLTAGE: 500V AC(rms) FOR 1 MINUTE.
 - INSULATION RESISTANCE: 1000MΩ Min.
 - VOLTAGE RATING: 125V.
 - CURRENT RATING: 1.5A.
- ENVIRONMENT CHARACTERISTICS:
 - TEMPERATURE: -40°C~+85°C.
- MATERIALS
 - CONTACT MATERIAL: COPPER ALLOY.
 - CONTACT PLATING: SELECTIVE GOLD FLASH.
 - INSULATOR MATERIALS: PBT OR NYLON BLACK.
- PRODUCT NUMBER CODE:

DS1128-06-X X X X X - X

- Shell Type
 - S: W/ Shrapnel
 - X: W/O Shrapnel
- Housing Materials
 - N: Nylon
 - P: PBT
- Contact Plating
 - 0: Selective Gold Flash
- Housing Color
 - B: Black
- No.Of Contacts
 - 8: 8p8c
- Connector Type
 - S: Socket



PCB LAYOUT THICKNESS=1.6mm

CONNFLY
 TEL: 86-574-63508187
 FAX: 86-574-63511817
 E-mail: sale@connfly.com
<http://www.connfly.com>
 Add: East Industry Zone KuangYan
 Town Cixi Ningbo China
 P.C: 315333

GENERAL TOLERANCE		ANGLE TOLERANCE	
X.	±0.60	X.	±5°
.X	±0.38	.X	±3°
.XX	±0.25	.XX	±2°

DRAWING TYPE	CUSTOMER	
SCALE	1:1	SHEET 1 OF 1
DRAWING NO.	C-DS1128-06-XXXXX-X-A	

PROJECTION	TITLE
	PCB Jack 8 Positions W/ Full Shell After 3.43mm
UNITS	mm
SHEET SIZE	A4
SERIES	DS1128-06 SERIES

晨翔电子有限公司
 CONNFLY CONNFLY ELECTRONIC CO. LTD