

REV.	DESCRIPTION	DRAWN	CHECKED	APPROVED
A	NEW RELEASE	JLZ 06/09/15'		

NOTES:

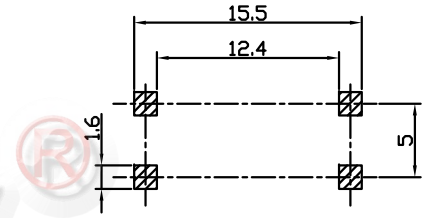
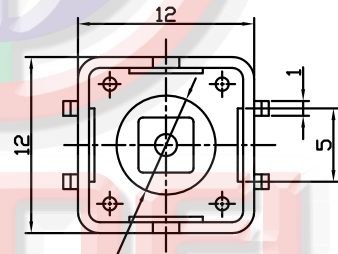
1. SPECIFICATIONS

- . switch function: Single pole Single throw
- . contact rating: 50mA at 12vdc
- . insulation resistance:100MΩ min at 500vdc
- . contact resistance:100mΩ max
- . operating life:100,000 cycles
- . operating force: see below
- . stop strength: place the switch such that vertical, a static load of 3kgf shall be applied in the direction of stem,operation for a period of 15 secs.
- . stroke: (6x6)0.25^{+0.2mm/-0.1mm}(12x12)0.35±0.1mm
- . operation temperature range: -20°C to 70°C
- . storage temperature range: -20°C to +70°C
- . wave soldering: recommended solder temperature at 500°F(260°C)max. 5 seconds,subject to pcb 1.6mm thickness.
- . hand soldering: use a soldering iron of 30 watts,controlled at 608°F(320°C)approximately 2 seconds while applying solder.

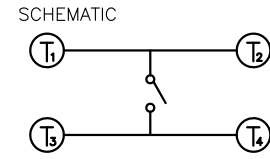
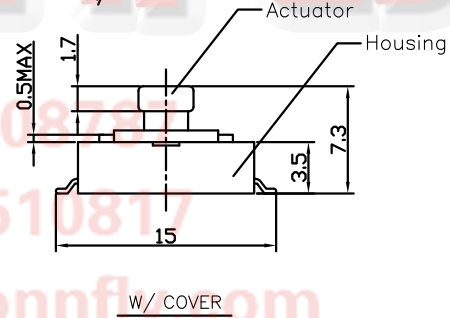
3. PRODUCT NUMBER CODE:

DS1042 - X X X X X X - ELTECH - 023

- Operating Life
10: 100000 cycles
- Operating force
130: 130gf
- Cover type
S: W/ cover
- Packing type
R: tape on reel
- Actuator color
Y: Yellow
- Housing color
K: black
- Size
2: 12mmX12mm



RECOMMEND P.C.B.LAYOUT(Tolerance=±0.05)



TEL:86-574-6350888
 FAX:86-574-6351081
 E-mail:sale@connfly.com
 http://www.connfly.com
 Add:East Industry Zone KuangYan
 Town Cixi Ningbo China
 P.C:315333

GENERAL TOLERANCE		ANGLE TOLERANCE		PROJECTION		TITLE	TACT SWITCH SMT TYPE		
X.	±0.60	X.	±5°	UNITS	mm	SERIES	DS1042		
.X	±0.38	.X	±3°	SHEET SIZE	A4				
.XX	±0.25	.XX	±2°						
DRAWING TYPE		CUSTOMER			晨翔电子有限公司 CONNFLY CONNFLY ELECTRONIC CO. LTD				
SCALE		1:1	SHEET 1 OF 1						
DRAWING NO.		C-DS1042-2KYRS13010-ELTECH-023-A							

FOR ELTECH ONLY