

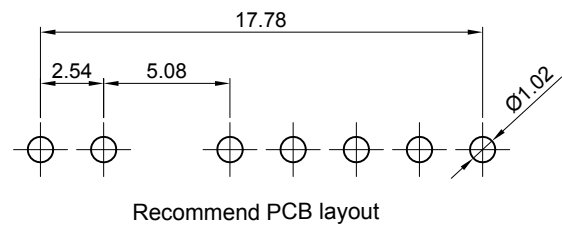
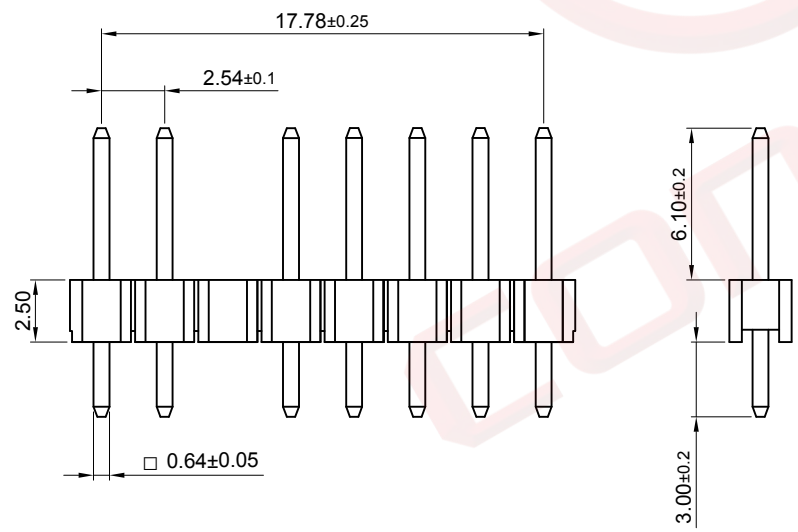
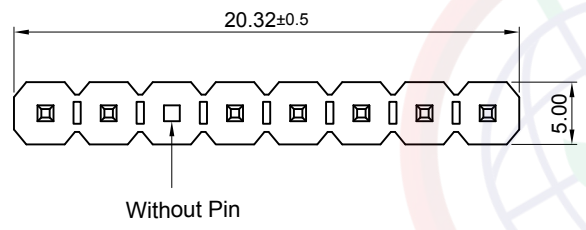
The information provided herein is from CONNFLY Electronic Co., Ltd. and is confidential. Any disclosure to a party other than the recipient is prohibited. The intellectual properties and its rights are reserved by CONNFLY Electronic Co., Ltd. without prior written consent from CONNFLY. All intellectual properties provided herein are for reference purposes only and does not constitute authorization of its use in any format or manner. CONNFLY may enforce its intellectual property rights at its own discretion; failures or delays to exercise such rights does not constitute a waiver of such rights.

P/N Code: DS1021-1x8SF11-B-E3

REV.	DESCRIPTION	DRAWN	CHECKED	APPROVED
A	NEW RELEASE	JLZ 04/05/21'		

Dept	Qty
DC	1
ED	1
IE	1
ISO	1
PD	1
R&D	1
SD	1
QA	1
QC	1
QF	1

- Notes:
- Specifications:
1. Contact Resistance: 20mΩ Max.
  2. Insulation Resistance: 1000MΩ Min.
  3. Dielectric Withstanding Voltage: 600V AC(rms) For 1 Minute.
  4. Current Rating: 3A.
  5. Temperature: -40°C~+105°C.
- Materials:
1. Contact Material: Copper Alloy.
  2. Contact Plating: Gold Plating Over Nickel.
  3. Insulator Material: PBT, Black, UL94-V0.



GENERAL TOLERANCE		ANGLE TOLERANCE		PROJECTION		TITLE	PIN HEADER PITCH 2.54mm V/T TYPE	
X.	±0.60	X.	±5°	UNITS	mm			
.X	±0.38	.X	±3°	SHEET SIZE	A4	SERIES	DS1021 SERIES	
.XX	±0.25	.XX	±2°	<b>晨翔电子有限公司</b> CONNFLY ELECTRONIC CO. LTD				
DRAWING TYPE		CUSTOMER						
SCALE	1:1	SHEET	1 OF 1					
DRAWING NO.		C-DS1021-XXXXX-B-E3-A						

FOR ELTECH ONLY