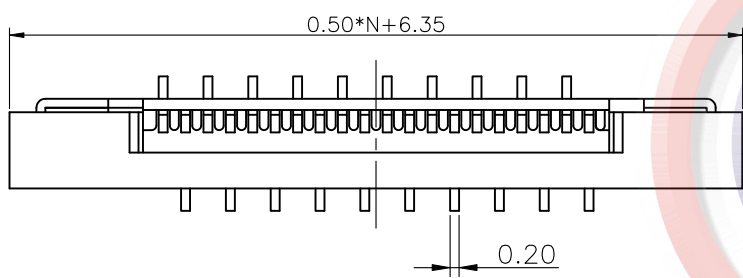


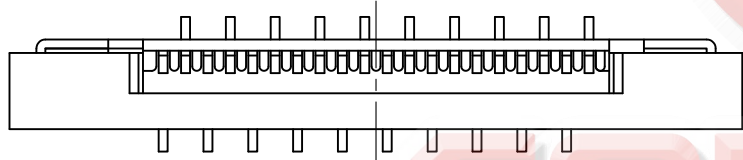
REV.	DESCRIPTION	DRAWN	CHECKED	APPROVED
A	NEW RELEASE	YCH 09/04/08'	~	LJC 09/04/08'
B	DRAWING UPDATE	JLZ 09/13/17'	~	

NOTES:

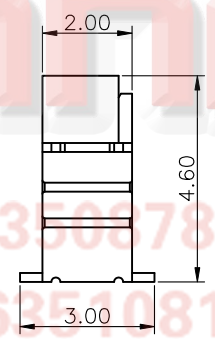
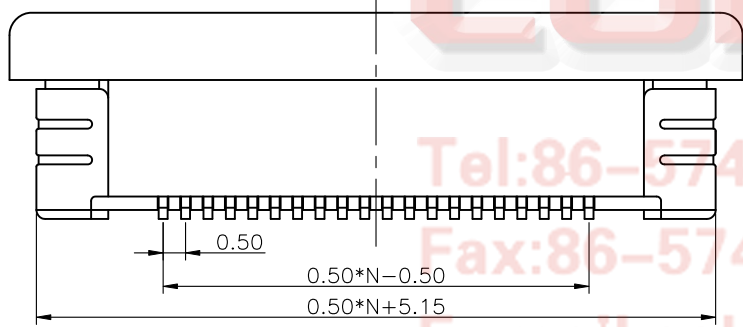
- MATERIAL
 - INSULATOR:THERMOPLASTIC(UL 94V-0).
 - CONTACT: COPPER ALLOY.
- SPECIFICATION
 - TEMPERATURE:-20°C~+85°C.
 - CONTACT RESISTANCE:30mΩ max.
 - INSULATION RESISTANCE:100MΩ min.
 - DIELECTRIC WITHSTANDING VOLTAGE:AC 100V PER MINUTE.
- PART NUMBER: DS1020-08
- PRODUCT NUMBER CODE:
DS1020-08- X X X X X - X
 - PACKING TYPE
R: TAPE ON REEL
N/A CODE: TUBE
 - BEND TYPE
1: R1 TYPE
2: R2 TYPE
 - CONTACT PLATING
T1: TIN
8: FULL GOLD FLASH
 - COVER COLOR
B:BLACK
 - HOUSING COLOR
V:IVORY
 - No. OF CONTACTS
04~39



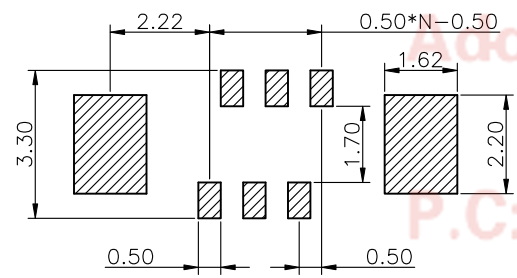
R1 TYPE



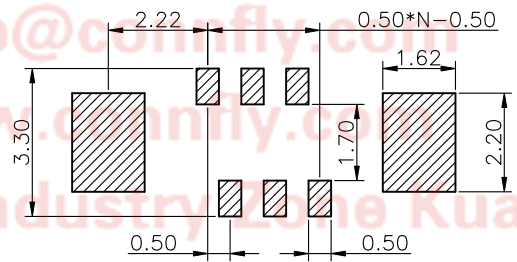
R2 TYPE



N=No. OF CONTACTS



RECOMMEND PCB LAYOUT(for R2 type)
(TOLERANCE=±0.05)



RECOMMEND PCB LAYOUT(for R1 type)
(TOLERANCE=±0.05)

GENERAL TOLERANCE		ANGLE TOLERANCE	
X.	±0.60	X.	±5°
.X	±0.38	.X	±3°
.XX	±0.25	.XX	±2°

DRAWING TYPE	CUSTOMER		
SCALE	1:1	SHEET	1 OF 1
DRAWING NO.	C-DS1020-08-XXXXX-X-B		

PROJECTION		TITLE	0.50mm FPC CONNECTOR
UNITS	mm		ZIF V/T SMT TYPE
SHEET SIZE	A4	SERIES	DS1020-08 SERIES

晨翔电子有限公司
CONNFLY CONNFLY ELECTRONIC CO. LTD