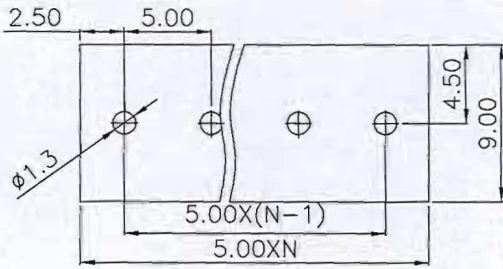
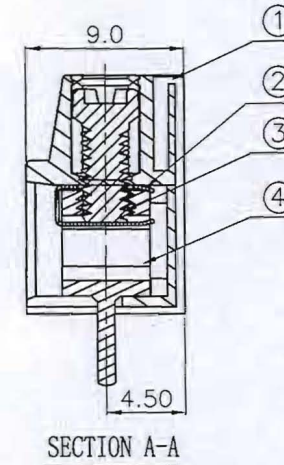
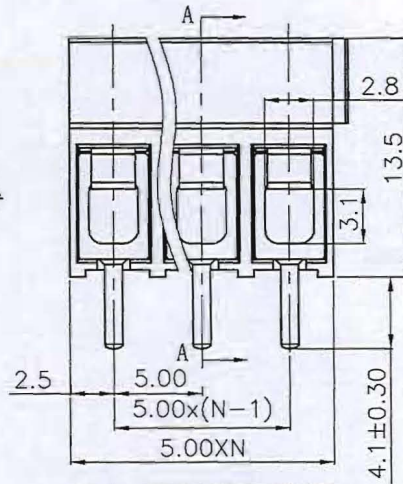
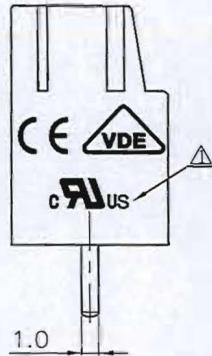
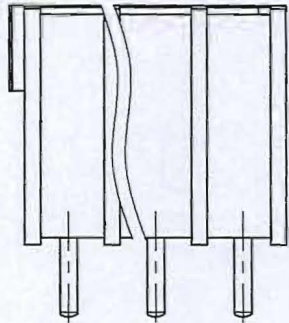
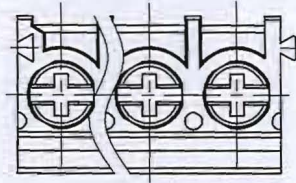


REVISION RECORD					
REV	ECN	DESCRIPTION	DRFT	DATE	
△	10-0150	增加UL刻字	Lasting	08/09/10	



PCB LAYOUT (REF)



Notes:

- pitch: 5.0mm 2-12P
- Rated voltage/current: UL 300V/20A
IEC 250V/25A
- Insulation resistance: 5000MΩ/1000V
- Withstanding voltage: AC2000V/1Min
- Wire range: 20-12AWG 0.5-4mm²
- Temp, Range: -40° C ~ +105° C
- Torque: 5.10kgf.cm
- Undimensioned Tolerances:

Pitch range in mm		Nominal dimension range in mm						
to	over	to	over	to	over	to	over	
6	10	10	24	30	60	100	150	∩
6	10	10	24	30	60	100	150	□
±0.10	±0.15	±0.25	±0.2	±0.3	±0.5	±0.7	±1.0	0.05/0.10

4	DG302 Pin header	4139B00010 (H)	XX	Brass	SnCe
3	DG302 Screws	S000003390 (H)	XX	Steel	Cr ³⁺ Zn
2	DG126 Spring	X000001760 (H)	XX	Stainless steel	

ITEM	NAME OF PART	NO. OF PART	Q'TY	MATERIAL	NOTES
1	DG302V-5.0-Housing	4139A0YXXA (H)	1	PA66	UL94V-0

MM (INCH)	DFTO Linda	DATE 07/01/08	宁波高正电子有限公司 NINGBO DEGSON ELECTRICAL CO., LTD.
TOLERANCES EXCEPT AS NOTED	CHKD Jayz	DATE 2010.11.28	
MM	MFO	DATE	NAME DG302-5.0-XXP-1Y-02A(H)
.00 ±	APPL. Lench	DATE 2010.11.29	
.000 ±	MATERIAL :		DRAWING NO. DG302-5.0-E02 /PART NO.
ANGLES ± 1°	G.E :		
THIRD ANGLE PROJECTION	FINISH :		SIZE A3 REV T1 08/09/10
	SCALE : 1:1		DO NOT SCALE DRAWING
			SHEET 1 OF 1

