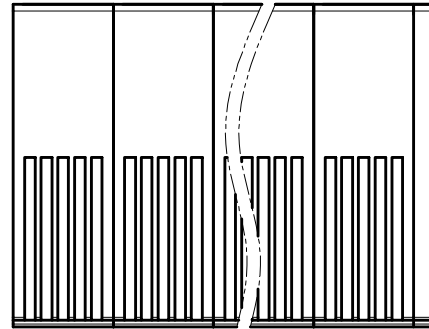
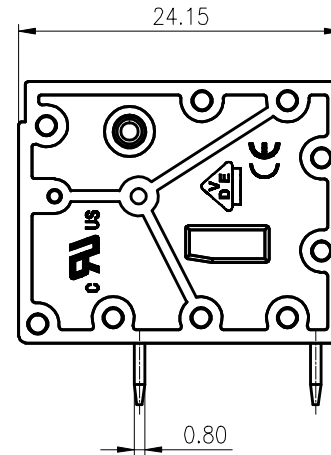
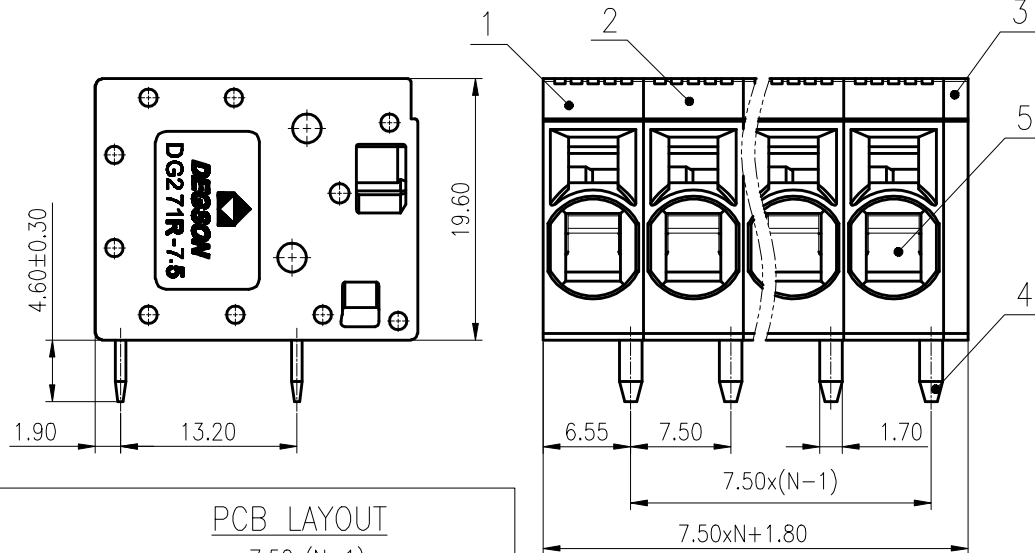


| 公差/General tolerances(mm) | | | | | | | | | | | 0.1/10 ±2' | | |
|---------------------------|-------|-------|-------|-------|-------|-------|-------|-------|-------|-------|---------------|-------|-------|
| 0 | >3 | >6 | >10 | >18 | >30 | >50 | >80 | >120 | >180 | >250 | | >315 | >400 |
| ~3 | ~6 | ~10 | ~18 | ~30 | ~50 | ~80 | ~120 | ~180 | ~250 | ~315 | ~400 | ~500 | ~2.50 |
| ±0.12 | ±0.18 | ±0.22 | ±0.26 | ±0.31 | ±0.37 | ±0.57 | ±0.80 | ±0.93 | ±1.05 | ±1.15 | ±1.60 | ±2.20 | ±2.50 |

A



B

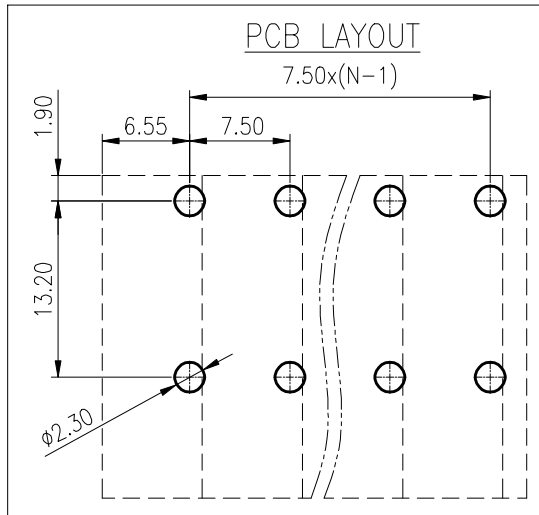


C

DG271R-7.5-XXP-1Y-100AH
DG271R-7.5 - series
XXP - number of Poles (number of Pins)
1 - single-row
Y - color of housing (4 - green color)
100AH - no value

| ITEM | NAME OF PART | MATERIAL | NOTES |
|--|----------------|-----------------|-----------------|
| 5 | Spring | Stainless steel | / |
| 4 | Pin header | Copper | Sn Plated |
| 3 | Cover | PA66 | UL94V-0 |
| 2 | Center housing | PA66 | UL94V-0 |
| 1 | End housing | PA66 | UL94V-0 |
| JL 标准/UL Standard: B C D | | | |
| 额定电压/电涌/Rated Voltage(V)/Current(A) | | 300/40 | / 300/10 |
| IEC 标准/IEC Standard: | | | |
| 过压类别/Overvoltage Category/污染等级/Pollution Degree | | III/3 | III/2 II/2 |
| 额定电压/电涌/Rated Voltage(V)/Current(A) | | 630/41 | 1000/41 1000/41 |
| 额定脉冲电压(KV)/Rate Impulse Voltage(KV) | | 6 | 6 6 |
| 线径范围(硬线和软线)/Wire Range(rigid and flexible)(mm ² /AWG) | | 0.2~6/24~8 | |
| 间距/Pitch(mm) 线数范围/Poles | | 7.5/N=01~16P | |
| 剥线长度/Stripping length(mm) | | 14~15 | |
| 使用温度范围/Operating temperature(°C) | | -40~+105 | |
| 符合RoHS环保要求/Conform to RoHS | | Yes | |

D



| | | | |
|------------------------|---|------------------------|----------------------|
| MATERIAL: / | SURFACE: / | | |
| MAT NO.: / | 宁波高松电子有限公司 NINGBO DEGSON ELECTRICAL CO., LTD | | |
| STATUS: / | | | |
| APPD: Li GL 2020.05.15 | NAME: DG271R-7.5-XXP-1Y-100A(H) | | |
| CHKD: MaEK 2020.05.15 | DRAWING NO.: DG271R-7.5-C05 | | |
| DRFT: BYH 2018.10.08 | REV | T1 | |
| ④ | SIZE: A4 | TYPE: CUSTOMER DRAWING | SCALE: 2:1 SHEET 1/1 |

| REV | ECN | DESCRIPTION | DRFT | DATE |
|-----|-----|-------------|------|------|
| | | | | |