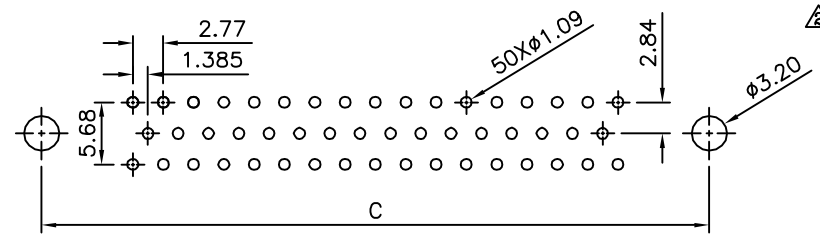


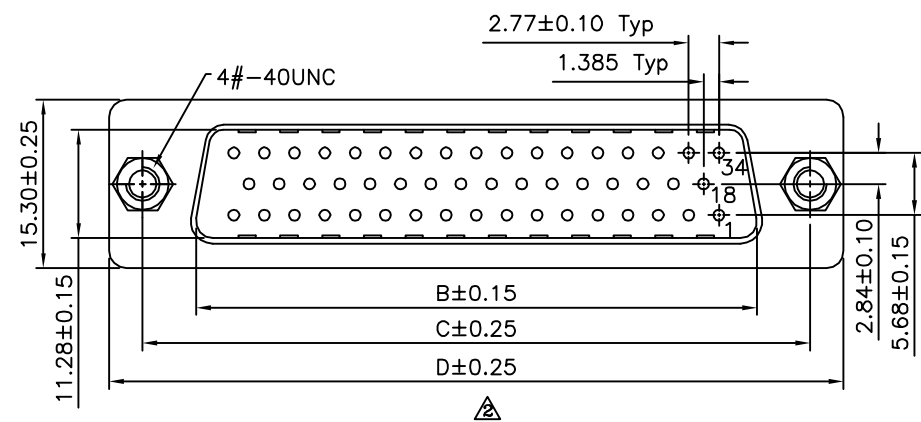
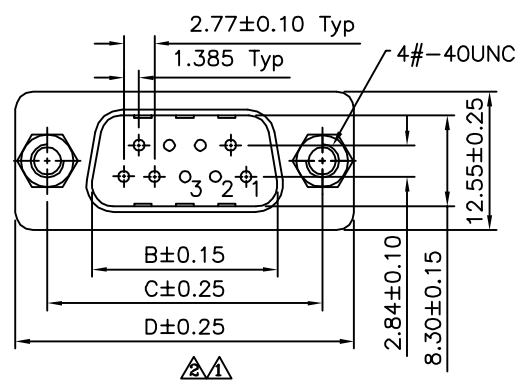
Recommended P.C.B. Layout



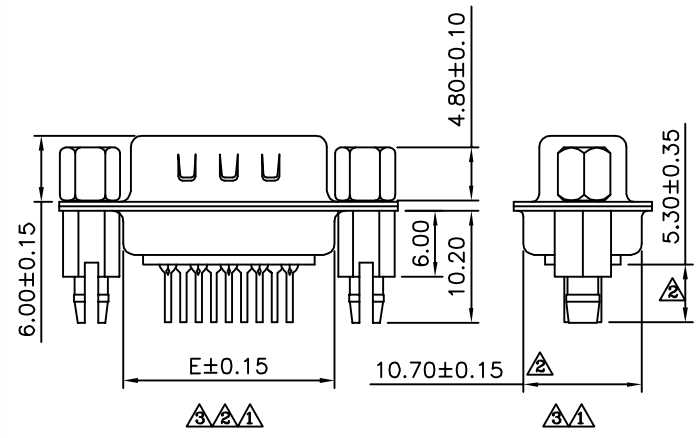
Recommended P.C.B. Layout

SPECIFICATION

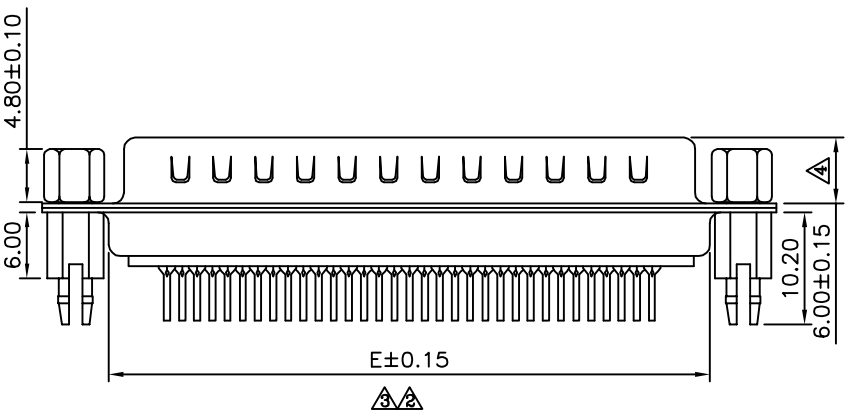
Current Rating: 1 Amp
 Withstanding Voltage: 1000V(One Minute)
 Contact Resistance: 20 Milliohms Max.
 Insulation Resistance: 1000 Megaohms Min.
 At 500V DC
 Operation Temperature: -50°C~+105°C
 Insulator: PBT+30%G.F.(UL94V-0)
 Contact: Brass
 Shell: SPCC, Front: Nickel Plated, Rear: Tin Plated
 Screw: 12L14, Nickel Plated
 Boardlocks: Copper Alloy, Tin Plated
 RoHS Compliant



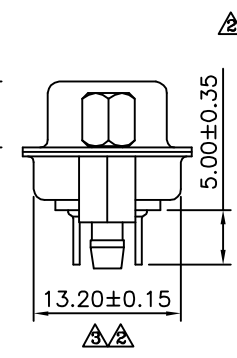
- DD XX P ZJ - XX - SXX - H
 (1) (2) (3) (4) (5) (6) (7)
- (1) DD: SUB DIP Straight
 - (2) XX: No. Of Position
 - (3) P: Male
 - (4) ZJ: Rear Rivet Boardlock Front Jackscrew
 - (5) XX: Insulator Color
 Blank: White
 BK: Black
 BL: Blue
 - (6) SXX: Contact Finish
 S00: Gold Flash On Contact Area,
 Tin Plated On Solder Tails, Over Nickel
 - S15: Gold Plated 15u" On Contact Area,
 Tin Plated On Solder Tails, Over Nickel
 - S30: Gold Plated 30u" On Contact Area,
 Tin Plated On Solder Tails, Over Nickel
 - (7) H: RoHS Compliant



09,15,25,37 Pin



50 Pin



Pin	B	C	D	E
09	16.92	24.99	30.81	19.20
15	25.25	33.32	39.20	27.70
25	38.96	47.04	53.04	41.10
37	55.42	63.50	69.40	57.30
50	52.81	61.00	67.00	55.10

AUK A MEMBER OF AUK GROUP
太聯事業股份有限公司
AUK CONTRACTORS CO., LTD.

CATEGORY	APPROVED BY	UNLESS OTHERWISE SPECIFIED TOLERANCES ARE .X ±0.38 .X* ±3* .XX ±0.25 .XX* ±1* .XXX ±0.05 .XXX* ±0.5*	A4	Modify Spec.	HZF	04/11/2014
PART No. DDXXPZJ-XX-SXX-H	CHECKED BY		A3	Modify Data	HZF	04/10/2013
DRAWING No. DDXXPZJ-XX-SXX-H	DRAWING BY	UNIT mm	A2	Modify Data	HZF	12/01/2011
SCALE NONE	REV. A4		A1	Modify P/N: DDXXPZJ --> DDXXPZJ-XX-SXX-H.Add:09P.BK	HZF	02/24/2011
			A0	NEW RELEASE	HZF	06/26/2007
			NO.REV.	REVISIONS	CHK	DATE