

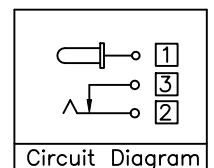
Recommended P.C.B. Layout(Top View)
(PCB Board Tolerance±0.05)

SPECIFICATION

Rating:DC 20V 7A
 Withstand Voltage:500V AC
 Contact Resistance:30 Milliohms Max.
 After Test:50 Milliohms Max.
 Insulation Resistance:100 Megaohms Min.(DC 500V)
 After Test:50 Megaohms Min.
 Operation Temperature Range:-20°C~+70°C
 Storage Temperature:-40°C~+85°C
 Insertion And Extraction Force:3~30N
 Life Test:5000 Cycles Min.
 RoHS Compliant

DCJ R D XX - M - L14 - R3H5 - H H
 (1) (2) (3) (4) (5) (6) (7) (8) (9)

- (1) DCJ:DC Power Jack DIP Right Angle
- (2) R:Right Type
- (3) D:Dent Type
- (4) XX:Pin Diameter
 20:Pin ϕ 2.0
 25:Pin ϕ 2.5
- (5) M:Metal Shell
- (6) L14:14.2mm Total Length
- (7) R3H5:Tape & Reel 350 PCS/Reel
- (8) H:Withstand High Temperature Soldering
- (9) H:RoHS Compliant



□:Terminal No.

⑥ Shell	1	C2680R-H	Nickel Plated
⑤ Grounding	1	SUS301R-H	--
④ Shunt terminal	3	C2680R-H	Silver Plated
③ Tip spring	2	C5210R-EH	Silver Plated
② Pin	1	Brass	Gold Plated Over Nickel
① Housing	1	LCP	Black
No. Description	Q'ty	Material	Remark



CATEGORY		APPROVED BY	UNLESS OTHERWISE SPECIFIED TOLERANCES ARE .X ±0.50 .X' ±5' .XX ±0.30 .X' ±3' .XXX ±0.15 .XX' ±2'					
PART No. DCJRDX-M-L14-R3H5-HH		CHECKED BY		MEI				
DRAWING No. DCJRDX-M-L14-R3H5-HH(DIA2.0,2.5)		DRAWING BY		HZF				
SCALE	NONE	REV.	A0	UNIT	mm			
						△ A0	NEW RELEASE	
						NO. REV.	REVISIONS	
							HZF	
							03/08/2018	
							CHK	
							DATE	