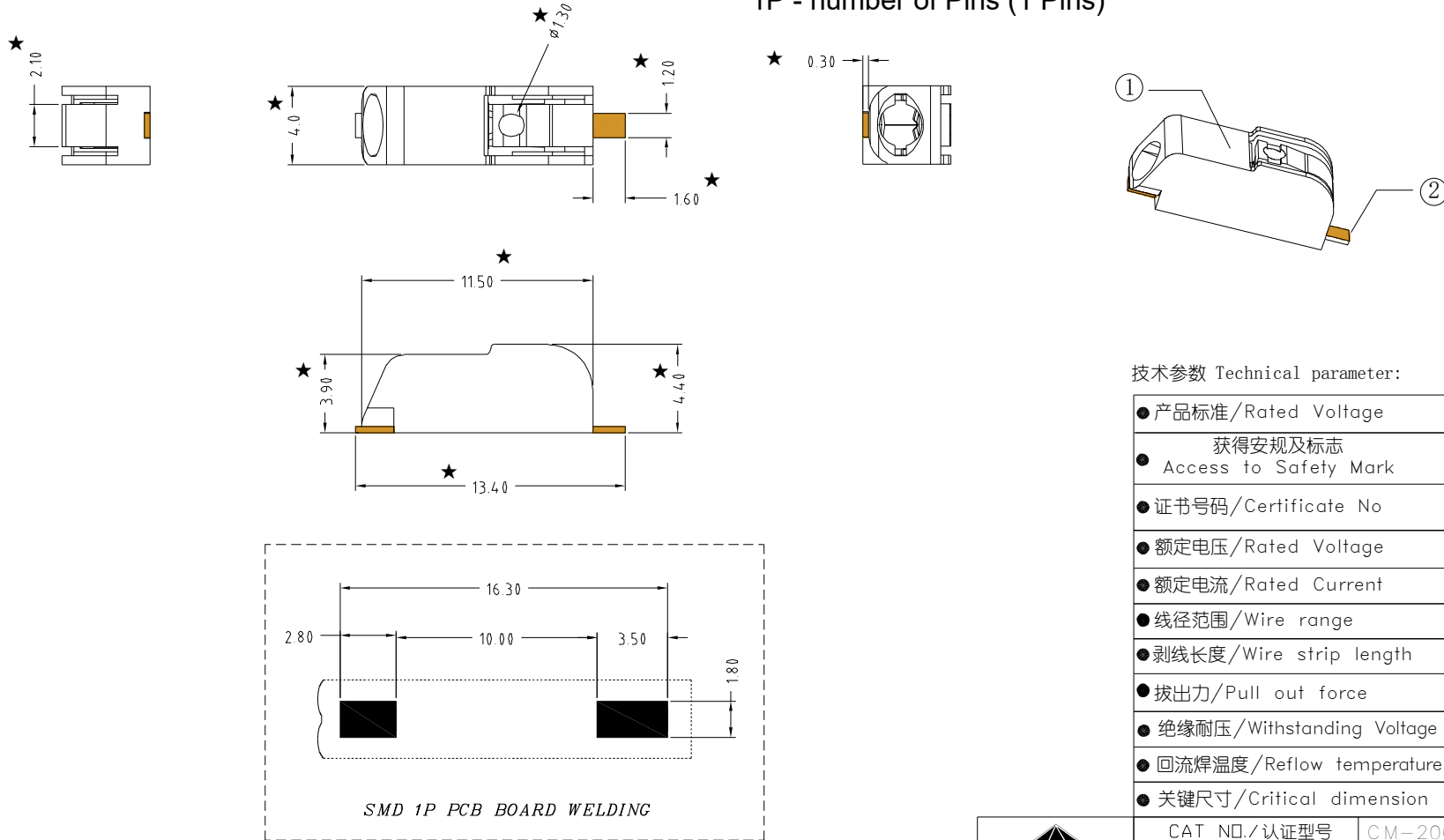


1		2		3		4		5		6		7		8	
未注公差/General tolerances(mm)														0.1/10	±2°
>0	>3	>6	>10	>18	>30	>50	>80	>120	>180	>250	>315	>400	>500		
~	~	~	~	~	~	~	~	~	~	~	~	~	~	~	
3	6	10	18	30	50	80	120	180	250	315	400	500			
±0.15	±0.20	±0.25	±0.30	±0.35	±0.40	±0.60	±0.80	±0.95	±1.00	±1.20	±1.60	±2.20	±2.50		

5	6	7	8
符号/SIGN	描述/DESCRIPTION	修订者/DRAWN	日期/DATE

Factory: Xiamen Fucon IMP&EXP CO.,LTD  
 Part No.: CM-2060-1P  
 CM-2060 - series of push wire connector (electrical terminal block for soldering to PCB)  
 1P - number of Pins (1 Pins)



技术参数 Technical parameter:

● 产品标准/Rated Voltage	UL1977
● 获得安规及标志 Access to Safety Mark	
● 证书号码/Certificate No	E467583
● 额定电压/Rated Voltage	300V
● 额定电流/Rated Current	9A
● 线径范围/Wire range	20~18AWG
● 剥线长度/Wire strip length	8~9mm
● 拔出力/Pull out force	1kg/1Min (静拉)
● 绝缘耐压/Withstanding Voltage	2500V
● 回流焊温度/Reflow temperature	260°C
● 关键尺寸/Critical dimension	★

 APPROVED/审批 CHECKED/核准 DRAWN/制图 SIZE: A4	CAT NO./认证型号	CM-2060	SHEET: 1/1
	PATE NO./成品料号	02.07.009.0001	SCALE: 1:1
	CUST NO./客户料号	/	REV.: A01
	MODEL:	CM-2060-1P	
	何跃雄 2021.12.15	DRAWING NO./图号:CM-2060-001	
	胡德权 2021.12.15	TYPE/图纸类型:CUSTOMER_DRAWING	
	陈燕龙 2021.12.15		

ITEM 序号	NAME OF PART 部件名称	Material 材料	NOTES 备注	QTY 用量
②	端子/Terminal	磷铜	镀锡	1
①	主座/Housing	LCP		1