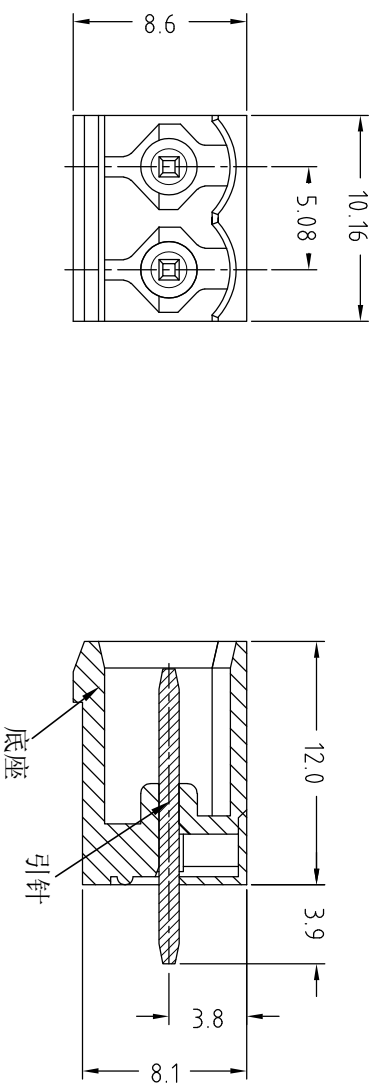


未注公差/General tolerances (mm)	
>0	>3
~	~
3	6
~	~
6	10
~	~
10	18
~	~
18	30
~	~
30	50
~	~
50	80
~	~
80	120
~	~
120	180
~	~
180	250
~	~
250	315
~	~
315	400
~	~
400	500
~	~
500	>500
~	~
>500	0.1/10
~	~
±0.15	±0.20
~	~
±0.25	±0.30
~	~
±0.35	±0.40
~	~
±0.50	±0.60
~	~
±0.80	±1.00
~	~
±1.20	±1.60
~	~
±2.00	±2.50
~	~
±2.50	±2.50

符号/SIGN	描述/DESCRIPTION	修订者/DRAWN	日期/DATE

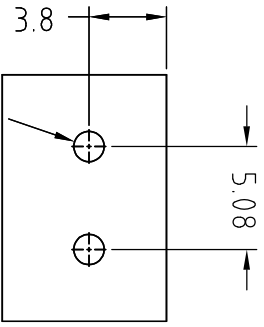
Factory: Xiamen Fucon IMP&EXP CO.,LTD  
 Part No.: CM-2EDG-ZKV-5.08-2P  
 CM-2EDG-ZKV- electrical  
 terminal block for soldering to PCB  
 5.08 - pitch 5.08 mm  
 2P - number of Pins (2 Pins)



技术参数 Technical parameter:

● 产品标准/Rated Voltage	UL 1059	EN 61984	GB/T 34989
● 获得安规及标志 Access to Safety Mark	<b>c</b> <b>UL</b> <b>US</b>		
● 证书号码/Certificate No	E338959	/	/
● 额定电压/Rated Voltage	300V	320V	320V
● 额定电流/Rated Current	15A	20A	/
● 线径范围/Wire range	/	/	/
● 硬质导线/Solid wire(AWG)	/	/	/
● 软质导线/Stranded wire(AWG)	/	/	/
● 剥线长度/Wire strip length	/	/	/
● 绝缘耐压/Withstanding Voltage	1600V	2500V	2500V
● 温度范围/Operating temperature	-40℃~120℃		
● 焊接温度/Soldering temperature	250℃~260℃		
● 关键尺寸/Critical dimension	★		

POB安装孔 (POB mounting hole)



②	四方针/our guidelines	CUH65	镀亮锡/Bright tin plating	2
①	主座/main body	尼龙/PA66	UL94-V0	1
ITEM	NAME OF PART	Material	NOTES	QTY
序号	部件名称	材料	备注	用量

	FUCCON		
APPROVED/审批	陈莺	2024.06.06	MODEL: CM-2EDG-ZKV-5.08-2P 插座
CHECKED/核准	郑前军	2024.06.06	DRAWING NO./图号: /
DRAWN/制图	蔡杰	2024.06.06	TYPE/图纸类型 CUSTOMER_DRAWING
SIZE: A4			