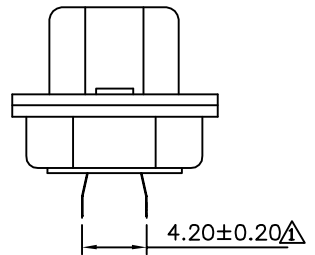


**△ SPECIFICATION**

△ Current Rating: 1A Max.  
 Withstanding Voltage: 500V AC For 1 Minute  
 Contact Resistance: 30 Milliohms Max.  
 Insulation Resistance: 1000 Megaohms Min.  
 At DC 500V  
 Temperature Range: -55°C ~ +105°C  
 RoHS Compliant

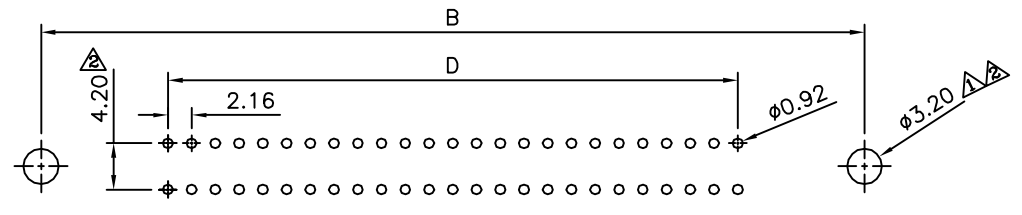
- △ C D XX P - H  
 (1) (2) (3) (4) (5)
- (1) C: Centronic Connector
  - (2) D: DIP Straight
  - (3) XX: No. Of Position
  - (4) P: Male
  - (5) H: RoHS Compliant

④	Back Shell	1	Cold Rolled Steel	Tin Plated
③	Front Shell	1	Cold Rolled Steel	Nickel Plated
②	Contact	—	Phosphor Bronze	Gold Flash On Contact Area, Tin Plated On Solder Tails, Over Nickel
①	Housing	1	PBT, UL94V-0	Blue
No.	Name	Q'ty	Material	Remark

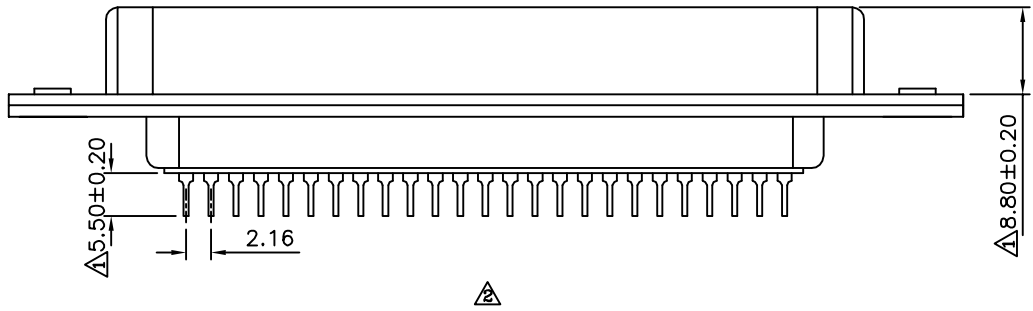
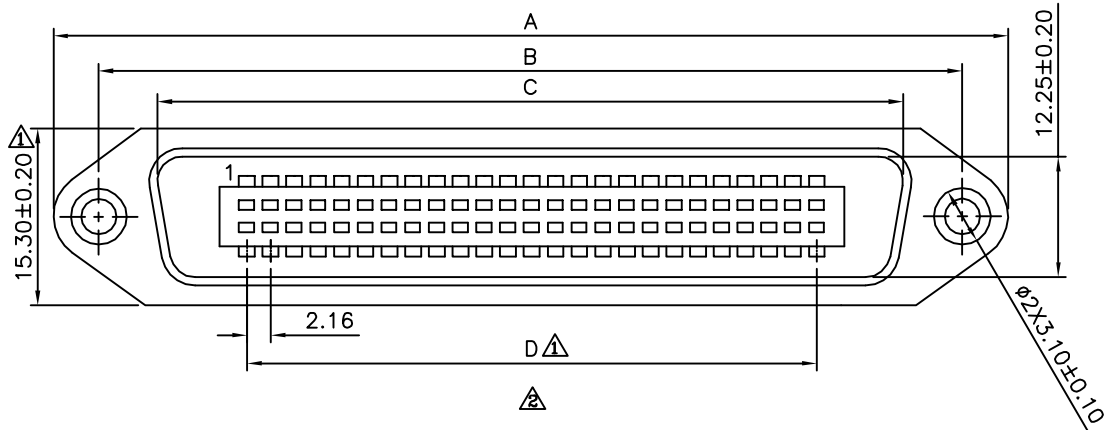


△

Pin	A ± 0.20	B ± 0.20	C ± 0.20	D ± 0.20
14	43.90	36.00	25.50	12.96
24	54.70	46.80	36.30	23.76
36	67.70	59.70	49.30	36.72
50	82.80	74.90	64.40	51.84



Recommended P.C.B. Layout



**AUK** A MEMBER OF AUK GROUP  
**太聯事業股份有限公司**  
**AUK CONTRACTORS CO., LTD.**

CATEGORY		APPROVED BY		UNLESS OTHERWISE SPECIFIED TOLERANCES ARE .X ± 0.3 .XX ± 0.20 .XXX ± 0.100 ANG. ± 1°
PART No. CDXXP-H		MEI		
DRAWING No. CDXXP-H		CHECKED BY HZF		
SCALE NONE		DRAWING BY GAO		
REV.	A3	UNIT mm		

NO.	REV.	REVISIONS	CHK	DATE
△ A3		Modify Data	HZF	06/04/2013
△ A2		Modify Data	HZF	05/17/2010
△ A1		UPDATE DRAWING&ADD PCB LAYOUT	HZF	09/20/2007
△ A0		NEW RELEASE	BECKY	12/13/2005