



Constant Current Dimmable Driver

Model: CC30W150-900CG Triac



SELV



Model	Output Current	Input Current	Input Power	Output Power Range	PF	Efficiency	Output Voltage	No load Voltage
CC30W150-900CG Triac	150mA	≤0.17A	≤37W	1.4-6.2W	≥0.80C	≥71%	9-42V	≤59V
	200mA			1.8-8.0W	≥0.86C	≥76%	9-42V	
	250mA			2.3-10.4W	≥0.89C	≥80%	9-42V	
	300mA			2.7-12.3W	≥0.90C	≥82%	9-42V	
	350mA			3.1-14.4W	≥0.93C	≥83%	9-42V	
	400mA			3.5-16.2W	≥0.94C	≥84%	9-42V	
	450mA			4.0-18.7W	≥0.95	≥85%	9-42V	
	500mA			4.4-20.6W	≥0.95	≥86%	9-42V	
	550mA			5.0-23.3W	≥0.95	≥86%	9-42V	
	600mA			5.4-25.2W	≥0.95	≥87%	9-42V	
	650mA			5.9-27.5W	≥0.95	≥87%	9-42V	
	700mA			6.3-29.4W	≥0.95	≥87%	9-42V	
	750mA			6.8-30.0W	≥0.95	≥87%	9-40V	
	800mA			7.2-29.4W	≥0.95	≥87%	9-37V	
	850mA			7.7-29.8W	≥0.95	≥86%	9-35V	
	900mA			8.0-29.5W	≥0.95	≥86%	9-33V	

* Test result @230V, 50Hz, Full Load

1. Parameters

Category	Item	Technical Norm
Features	Output Type	Constant Current
	Dimming Type	Phase dimming
	Dimming Range	1%-100%
	Output Features	Isolation
	IP Grade	IP20
	Insulation Class	Class II
Input	Rated Input Voltage	220-240VAC
	Range of Input Voltage	198-264VAC or 180-280VDC
	Frequency	50/60Hz
	Input Current	≤0.17A (230VAC, full load)
	Input Power	≤37W(230VAC, full load)
	Power Factor	≥0.95C(230VAC, full load)

	THD	≤15% (230VAC, full load)
	No-load Power Consumption	≤1.3W @230VAC
Output	Output Voltage	9-42V
	Output Current:	150/200/250/300/350/400/450/500/550/600/650/700/750/800/850/900mA
	No Load Voltage	59VDC Max
	Efficiency	≥87% (230VAC,full load)
	Max. Output Power:	30W
	LF Current Ripple (< 120 Hz)	±5% (Imax-Imin)/(Imax+Imin) MAX
	Current Accuracy	±5%
	Started Delay Time	≤2S (230VAC,full load)
	PstLM	≤1
	SVM	≤0.4
	Protection	Short Circuit Protection
Overload Protection		Auto Recovery
No-load Protection		Auto Recovery
Insulation voltage		3000V 5mA 60S between P-S
Insulation resistance		>100M ohm @ 500VDC
Leakage current		I/P to O/P <0.7mA
Environment	Ta/Operation Temperature	-20...45°C
	Ts/Storage Temperature	-40...85°C
	Tc/Enclosure Temperature	90°C
	Humidity	10%....90%RH
	Atmosphere	86-108KPa
Construction	Connection Method	Push-in Terminal
	Installation	Built in & Independent
	PRI Wire preparation	0.75-1.5□
	SEC Wire preparation	0.5-1.5□
	Dimension	Built in:97.5*44*23mm (L*W*H) Independent-Small side cover :137.6*44*23mm (L*W*H) Independent-Large side cover :191.6*44*23mm (L*W*H)
Standards	Certification	CE
	Safety Standards	EN 61347-1:2015/A1:2021 EN 61347-2-13:2014/A1:2017 EN IEC 62384:2020 EN 62493:2015
	EMC Standards	EN IEC 55015:2019 EN IEC 55015:2019/A11:2020 EN IEC 61000-3-2:2019/A1:2021 EN 61000-3-3:2013/A2:2021 EN IEC 61547:2023
	Performance	EN62384:2020
	Surge	L-N/2KV
	RoHS	complied to 2011/65/EU

Others	Life Time	50000h Ta /Tc
	Warranty	5years , F.R. < 10000ppm
	Noise	≤22dB@Background noise ≤18dB , Interval≥15cm
<p>Remark:1.All Parameters, if not specified, are measured at 230VAC/50Hz and 25°C ambient temperature. 2.LED Driver is a component of the luminaires, Luminaires and wire layout will affect the EMC, please check the EMC with end products again.</p>		

2. Trailing Edge Dimmer list approved by KGP

Manufacturer	Model	Q'ty of parallel connection
Yikai	EU-200P	T.B.D
Berker	286710	T.B.D
Schneider	SBD200LED	T.B.D
Schneider	SBD315RC	T.B.D
Eltako	DTD55L-230V-wg	T.B.D
ETMAN	ETM321PV2	T.B.D
EUCHIPS	Walldin 106	T.B.D
EHMANN	LED-Dimmer T37-08	T.B.D
JISIM	JP1101	T.B.D
LTECH	E6P-TD1	T.B.D
EUCHIPS	WALLDIM108W	T.B.D

Leading &Trailing Edge Dimmer list only on request -/ or confirmed by KGP Electronics

3. Output Current Setting

Output Current	Dial 1	Dial 2	Dial 3	Dial 4
150mA	-	-	-	-
200mA	-	-	-	ON
250mA	-	-	ON	-
300mA	-	-	ON	ON
350mA	-	ON	-	-
400mA	-	ON	-	ON
450mA	-	ON	ON	-
500mA	-	ON	ON	ON
550mA	ON	-	-	-
600mA	ON	-	-	ON
650mA	ON	-	ON	-
700mA	ON	-	ON	ON
750mA	ON	ON	-	-
800mA	ON	ON	-	ON
850mA	ON	ON	ON	-

900mA	ON	ON	ON	ON
-------	----	----	----	----

4. Connected quantities of different current Breaker

TYPE	Connected quantities of different current Breaker					Input Voltage	Inrush Current	Time
	current (A)	10	13	16	20			
	Installation wire diameter	1.5mm ²	2.5mm ²	2.5mm ²	4mm ²	4mm ²		
TYPE B		40	52	64	80	100	@230VAC	15
TYPE C		64	83	102	128	160		
TYPE D		102	133	164	205	256		

5. Label

KGP
KGP Electronics GmbH
Hueckstraße 19
DE-58511 Lüdenscheid

wire preparation
8-9mm
PRI:0.75-1.5[□]
SEC:0.5-1.5[□]

N
L PRI

CC30W150-900CG Triac LED Dimmable Driver
Constant Current LED Power Supply tc:90°C ta:-20...45°C
PRI:220-240VAC 50/60Hz 0.17A Max.
SEC:150-700mA 9-42VDC 750mA 9-40VDC 800mA 9-37VDC
850mA 9-35VDC 900mA 9-33VDC

Pout [W]	Iout [mA]	λ	1	2	3	4	Pout [W]	Iout [mA]	λ	1	2	3	4
6.2	150	0.83C	-	-	-	-	23.3	550	0.95	ON	-	-	-
8.0	200	0.86C	-	-	-	ON	25.2	600	0.95	ON	-	-	ON
10.4	250	0.90C	-	-	ON	-	27.5	650	0.95	ON	-	ON	-
12.3	300	0.91C	-	-	ON	ON	29.4	700	0.95	ON	-	ON	ON
14.4	350	0.93C	-	ON	-	-	30.0	750	0.95	ON	ON	-	-
16.2	400	0.94C	-	ON	-	ON	29.4	800	0.95	ON	ON	-	ON
18.7	450	0.94C	-	ON	ON	-	29.8	850	0.95	ON	ON	ON	-
20.6	500	0.94C	-	ON	ON	ON	29.5	900	0.95	ON	ON	ON	ON

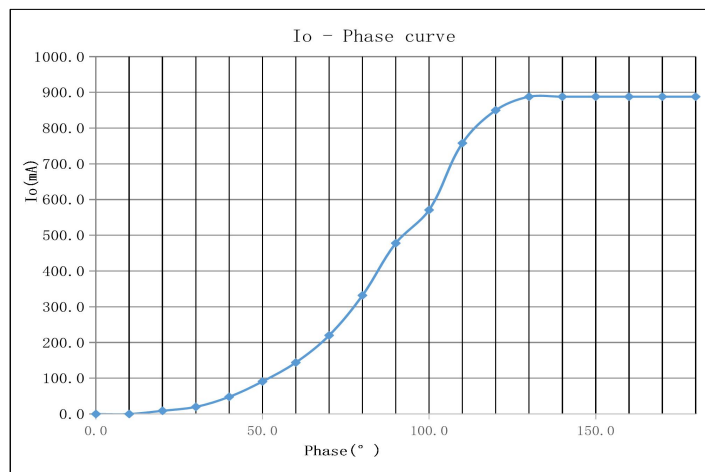
SEC: ● +
● -

R,C

ON ↑
OFF ↓

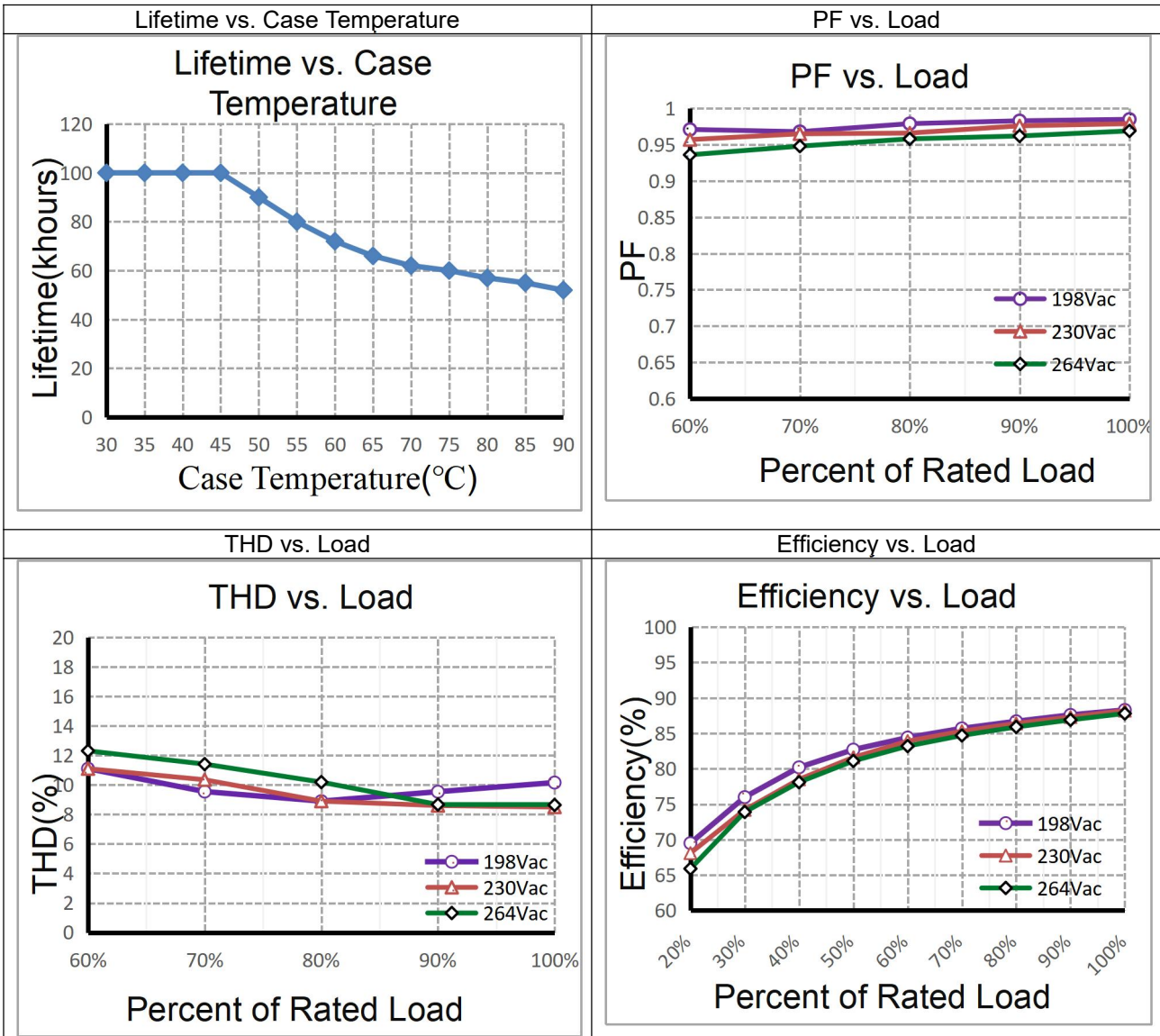
Uout:Max.55VDC
For LED modules Only

6. Dimming curve

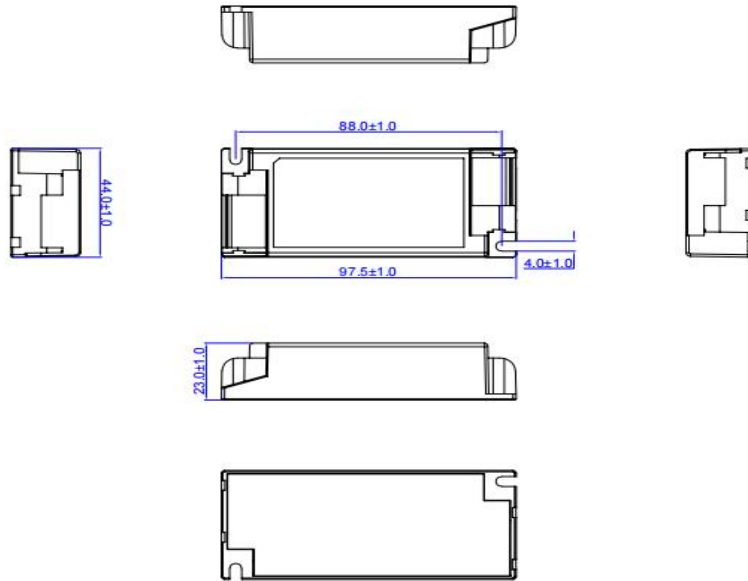


(Specific dimmer)

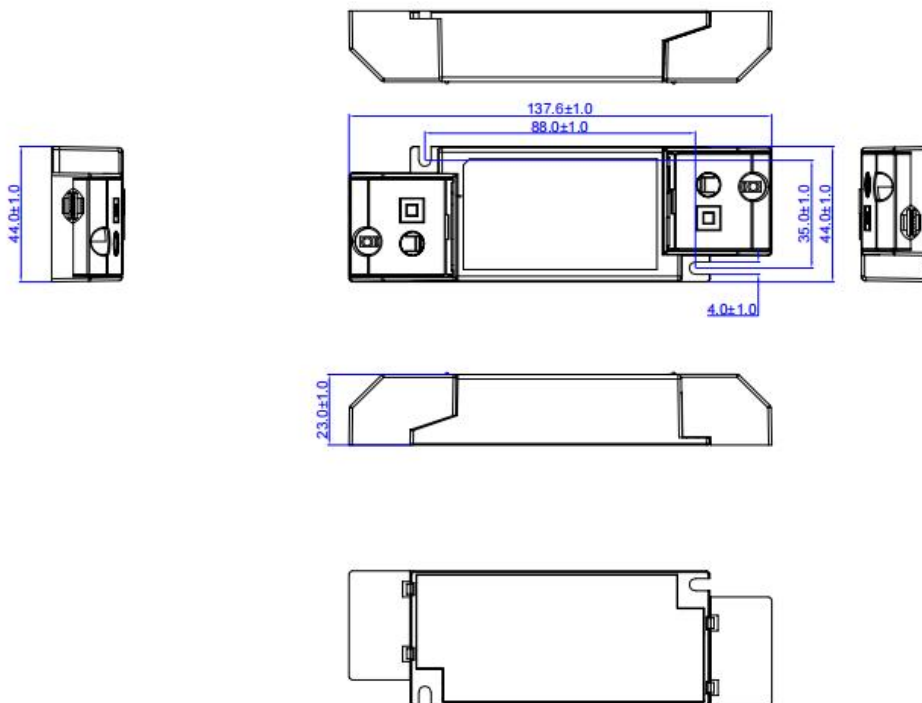
7. Electrical values



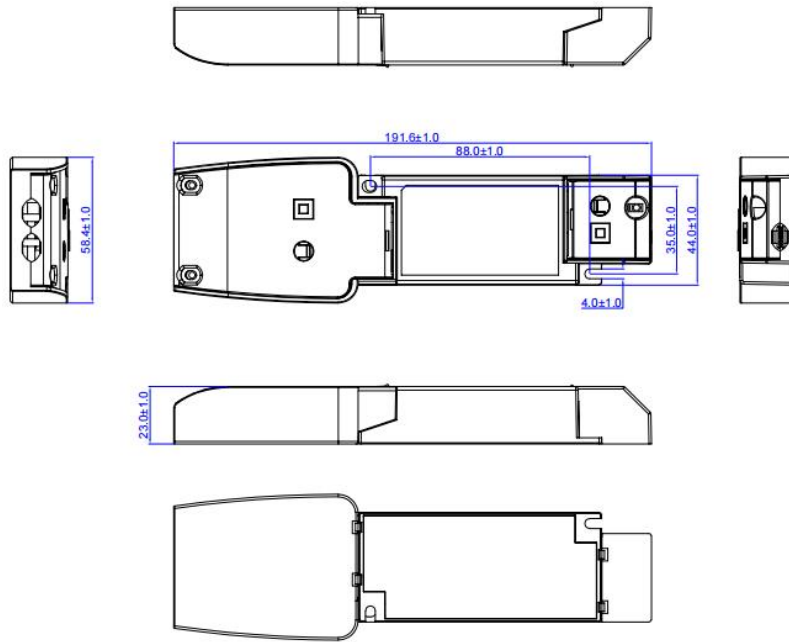
8. Dimension (Unit: mm) SC (A) :



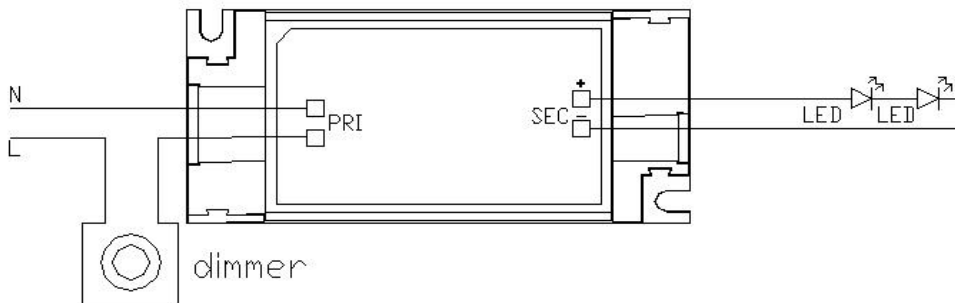
Small side cover(B) :



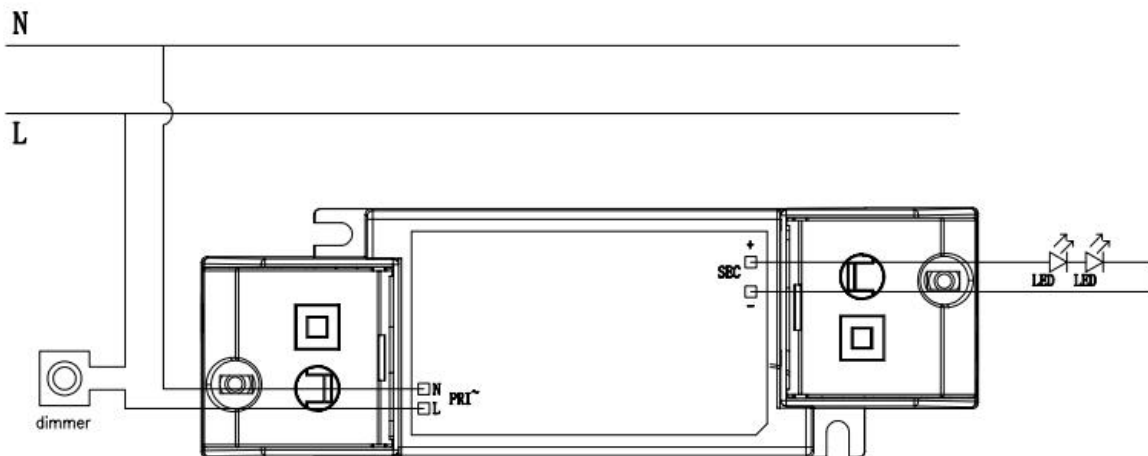
Large side cover(C):



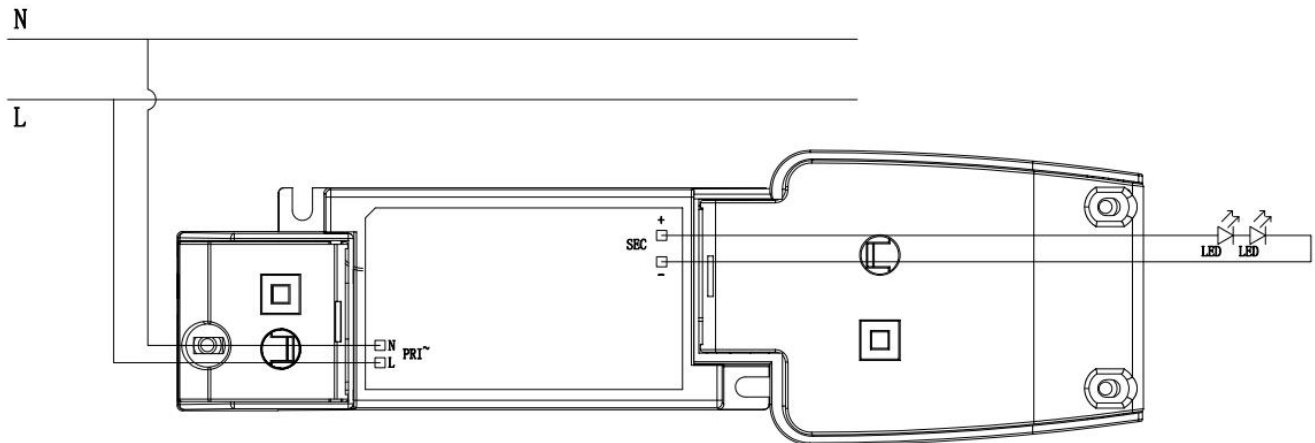
9. Wiring Diagram SC (A) :



Small side cover(B) :



Large side cover(C):



10. Packing information

SC(A)

Packing way	Model	Colour	Carton L*W*H(mm)	Pcs/ Carton	Net weight/ Pcs(kg)	Net weight/ Carton(kg)	Gross weight/ Carton(kg)
industrial	CC30W150-900CG Triac	White	457*250*220	80	0.132	10.56	11.26

Small side cover(B)

Packing way	Model	Colour	Carton L*W*H(mm)	Pcs/ Carton	Net weight/ Pcs(kg)	Net weight/ Carton(kg)	Gross weight/ Carton(kg)
industrial	CC30W150-900CG Triac	White	457*250*220	80	0.15	12	12.7

Large side cover(C)

Packing way	Model	Colour	Carton L*W*H(mm)	Pcs/ Carton	Net weight/ Pcs(kg)	Net weight/ Carton(kg)	Gross weight/ Carton(kg)
industrial	CC30W150-900CG Triac	White	457*250*220	80	0.172	13.76	14.46

***The details shall be subject to the shipping package.**

11. Wiring instructions

- All connections must be kept as short as possible to ensure good EMI behaviour
- Mains leads should be kept apart from LED Driver and other leads (ideally 5 – 10 cm distance)
- Advice the maximum length of output wires is 3 m
- Secondary switching is not permitted (Except for constant voltage)
- Incorrect wiring can damage LED modules.
- The wiring must be protected against short circuits to earth (sharp edged metals parts, metal cable clips, louver, etc)

12. REVISION HISTORY

DATE	VER	REMARK
2024-09-29	V1.0	Initial release.